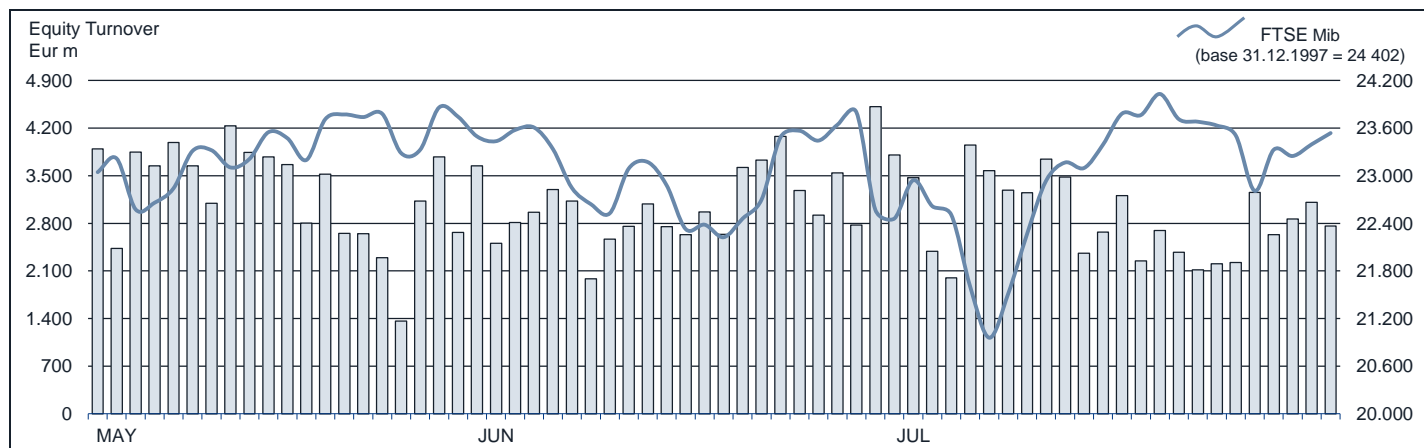




FTSE MIB Statistics

JULY 2015

EQUITY DAILY TURNOVER AND FTSE MIB EVOLUTION



FTSE MIB SHARES (BASKET UPDATED AS FROM 22.06.2015)

	PRICE (eur)			CAPITALISATION (eur m)		TURNOVER (eur m)	
	31 JUL 2015	VAR. % MOM	VAR. % 2014 END	30 JUN 2015	31 JUL 2015	JUL 2015	JAN-JUL 2015
A2A	1,1588	7,5%	38,4%	3 378,5	3 630,3	373,6	2 890,2
ANSALDO STS	9,4299	0,8%	12,9%	1 870,7	1 886,0	319,9	2 168,3
ATLANTIA	24,3029	9,6%	25,3%	18 316,6	20 068,9	1 124,8	7 851,0
AUTOGRILL	8,2657	9,5%	32,1%	1 921,0	2 102,8	427,4	2 430,3
AZIMUT HOLDING	22,5750	-13,9%	28,2%	3 757,5	3 234,0	1 417,6	5 893,0
BANCA MONTE PASCHI SIENA	1,7881	1,5%	-6,8%	4 957,2	5 242,7	2 544,2	12 401,6
BANCA POP EMILIA ROMAGNA	8,0574	0,4%	47,3%	3 861,3	3 878,1	744,5	6 043,3
BANCA POPOLARE MILANO	0,9787	4,0%	80,2%	4 134,3	4 298,3	1 520,1	11 323,5
BANCO POPOLARE	15,8194	6,8%	57,1%	5 362,5	5 729,5	1 036,6	8 727,8
BUZZI UNICEM	15,3964	20,5%	46,5%	2 112,7	2 545,8	469,8	2 618,4
CAMPARI	7,2376	5,3%	40,6%	3 990,6	4 203,6	210,7	1 983,3
CNH INDUSTRIAL	8,1090	-1,1%	20,7%	11 151,0	11 037,3	760,0	5 110,3
ENEL	4,2647	4,0%	15,0%	38 572,6	40 102,9	4 432,5	32 826,2
ENEL GREEN POWER	1,8885	6,9%	8,3%	8 830,7	9 442,3	495,3	3 017,1
ENI	15,9120	-0,7%	9,2%	58 231,2	57 827,3	5 875,3	47 818,4
EXOR	45,6031	5,9%	33,7%	10 603,6	11 228,8	492,6	3 178,3
FIAT CHRYSLER AUTOMOBILES	14,2451	8,1%	47,6%	16 934,5	18 303,8	4 599,2	31 955,1
FINMECCANICA	13,1043	16,0%	68,9%	6 533,4	7 576,2	835,7	6 195,3
GENERALI	17,7937	9,4%	4,4%	25 327,4	27 702,5	2 971,0	22 139,0
INTESA SANPAOLO	3,4862	6,2%	43,0%	52 014,7	55 276,4	9 309,8	63 261,9
LUXOTTICA GROUP	65,8454	9,7%	47,0%	28 961,3	31 824,0	1 049,0	6 463,4
MEDIASET	4,5848	5,9%	32,7%	5 114,0	5 415,6	953,3	7 493,6
MEDIOBANCA	9,8699	11,9%	46,3%	7 649,7	8 560,9	1 180,3	6 254,9
MEDIOLANUM	7,2179	-2,8%	36,6%	5 478,1	5 332,0	551,2	2 784,0
MONCLER	18,2934	10,2%	65,6%	4 151,2	4 575,5	458,5	3 054,1
PIRELLI & C	15,0475	-1,0%	34,6%	7 230,8	7 158,7	665,3	6 533,2
PRYSMIAN	20,8250	6,6%	37,3%	4 234,0	4 513,2	645,0	4 223,0
SAIPEM	7,8909	-17,1%	-10,1%	4 201,1	3 482,3	1 258,6	11 914,4
SALVATORE FERRAGAMO	28,6346	5,2%	40,5%	4 592,5	4 833,2	387,7	2 720,9
SNAM	4,4766	4,0%	8,8%	15 070,1	15 670,9	1 264,2	8 686,1
STMICROELECTRONICS	7,0812	-3,8%	14,4%	6 704,5	6 449,1	1 055,2	6 343,9
TELECOM ITALIA	1,2051	6,3%	36,0%	15 275,0	16 233,5	3 109,9	18 164,2
TENARIS	11,4865	-5,1%	-7,0%	14 287,9	13 560,2	1 013,1	6 962,8
TERNA	4,2403	5,9%	12,1%	8 046,1	8 522,9	780,0	5 233,3
TOD'S	91,4645	7,7%	27,2%	2 600,3	2 799,7	385,3	2 495,4
UBI BANCA	7,3779	2,0%	23,6%	6 524,2	6 653,0	1 424,3	9 323,3
UNICREDIT	5,9835	-1,6%	11,8%	36 284,8	35 704,8	8 645,4	61 351,1
UNIPOLSAI	2,3653	6,0%	5,3%	6 206,8	6 576,6	504,0	3 570,7
WORLD DUTY FREE	10,1548	0,9%	27,9%	2 562,4	2 584,6	172,1	3 149,0
YOOX	30,8028	5,7%	66,6%	1 809,3	1 912,8	419,0	4 642,9

Markets Analysis
Piazza degli Affari, 6 - 20123 Milano
T +39 02 724261 | Fax +39 02 8646.4323
e-mail: markets_analysis@borsaitaliana.it
www.borsaitaliana.it

This document contains text, data, graphics, photographs, illustrations, artwork, names, logos, trade marks, service marks and information ("Information") connected with Borsa Italiana S.p.A. ("Borsa Italiana").

All reasonable efforts have been made to ensure that the Information in this document was correct at the time of publication. However, Borsa Italiana Spa accepts no liability for decisions taken, or systems-related or other work carried out by any party based on this document. The publication of this document does not represent solicitation, by Borsa Italiana, of public saving and is not to be considered as a recommendation by Borsa Italiana as to the suitability of the investment, if any, herein described.

© July 2015 Borsa Italiana S.p.A. All rights reserved.

