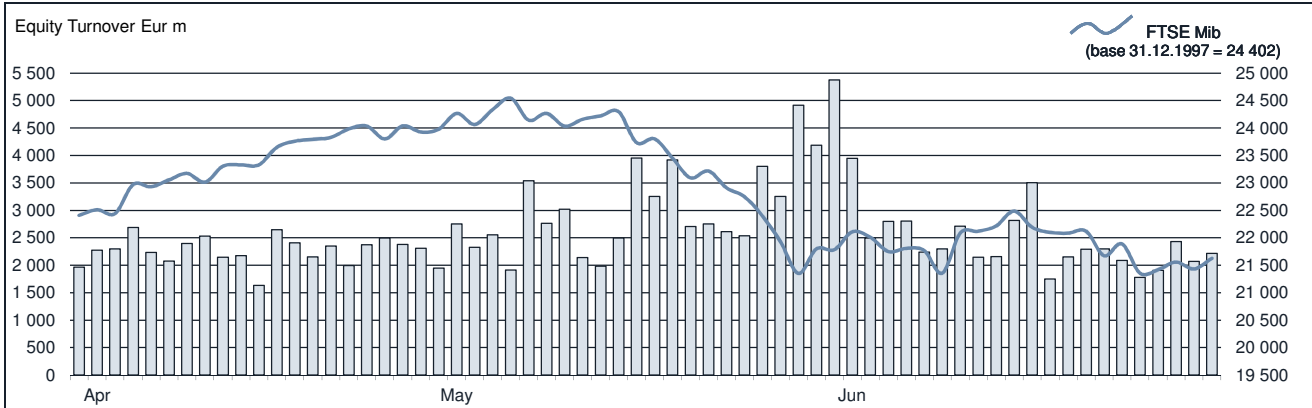




FTSE MIB Statistics

June 2018

EQUITY DAILY TURNOVER AND FTSE MIB EVOLUTION



FTSE MIB SHARES (BASKET UPDATED AS FROM 15.05.2018)

	PRICE (eur)			CAPITALISATION (eur m)		TURNOVER (eur m)	
	29 JUN 2018	VAR. % MOM	VAR. % 2017 END	31 MAY 2018	29 JUN 2018	29 JUN 2018	JAN-JUN 2018
A2A	1.4856	2.8%	-3.5%	4 526.1	4 654.3	333.9	2 193.8
ATLANTIA	25.2393	1.5%	-4.5%	20 533.5	20 842.2	1 040.6	6 390.6
AZIMUT HOLDING	13.3377	-5.1%	-16.5%	2 013.8	1 910.7	435.0	3 709.7
BANCA GENERALI	21.2877	2.4%	-23.7%	2 428.6	2 487.5	238.2	1 405.6
BANCA MEDIOLANUM	5.8190	-3.4%	-19.7%	4 459.2	4 307.5	138.7	1 198.3
BANCO BPM	2.5238	13.7%	-4.1%	3 363.6	3 823.9	1 687.1	9 526.5
BPER BANCA	4.7346	15.0%	11.8%	1 981.4	2 278.8	847.4	3 526.2
BREMBO	11.6046	-5.2%	-8.9%	4 086.5	3 875.0	185.2	1 457.5
BUZZI UNICEM	20.9859	1.8%	-7.1%	3 409.6	3 470.0	196.7	2 248.1
CAMPARI	7.0238	9.9%	8.8%	7 426.6	8 158.9	8 158.9	1 872.4
CNH INDUSTRIAL	9.0910	-9.6%	-18.6%	13 728.2	12 403.7	920.0	5 271.0
ENEL	4.7658	1.4%	-7.6%	47 805.9	48 452.5	3 299.5	20 363.9
ENI	15.9498	2.8%	15.0%	56 405.9	57 964.6	3 876.8	28 341.3
EXOR	57.7091	-6.9%	13.1%	14 941.9	13 907.9	513.6	3 676.1
FERRARI	116.7323	4.5%	32.6%	21 660.1	22 637.1	1 597.6	8 693.7
FIAT CHRYSLER AUTOMOBILES	16.6343	-14.1%	10.8%	30 011.5	25 777.4	4 421.1	31 094.9
FINECOBANK	9.6775	12.8%	12.8%	5 218.8	5 887.8	559.8	3 038.7
GENERALI	14.3516	-1.2%	-5.7%	22 740.1	22 462.7	1 709.3	12 744.8
INTESA SANPAOLO	2.5150	-0.5%	-9.2%	40 069.5	39 887.2	7 114.1	40 222.6
ITALGAS	4.7198	6.0%	-7.6%	3 602.8	3 819.0	278.8	1 618.0
LEONARDO	8.4721	-2.7%	-14.7%	5 034.4	4 898.1	519.1	5 656.3
LUXOTTICA GROUP	55.3829	3.7%	8.0%	25 904.2	26 866.0	600.1	3 589.8
MEDIASET	2.7488	-3.4%	-15.1%	3 359.7	3 247.0	192.6	1 994.8
MEDIABANCA	8.0060	-1.7%	-15.5%	7 220.2	7 095.3	768.7	5 218.6
MONCLER	38.9292	-0.8%	48.4%	10 030.4	9 950.2	1 120.6	6 478.4
PIRELLI & C	7.1636	-2.2%	-1.0%	7 322.2	7 163.6	328.8	2 626.8
POSTE ITALIANE	7.2185	-2.8%	14.7%	9 699.7	9 428.1	882.2	4 402.0
PRYSMIAN	21.0770	-11.4%	-22.8%	5 604.3	4 963.5	827.7	3 609.9
RECORDATI	34.1293	7.6%	-8.3%	6 630.3	7 137.3	611.6	3 001.4
SAIPEM	3.9296	7.0%	2.7%	3 711.1	3 972.7	779.5	5 101.9
SALVATORE FERRAGAMO	20.7686	-15.4%	-6.3%	4 145.2	3 505.5	322.5	1 676.2
SNAM	3.5805	1.5%	-12.4%	12 232.4	12 421.0	1 143.1	6 209.3
STMICROELECTRONICS	19.2704	-5.5%	5.1%	18 574.2	17 558.0	1 881.9	9 935.8
TELECOM ITALIA	0.6368	-8.1%	-12.0%	10 540.6	9 682.1	1 319.9	12 556.7
TENARIS	15.7604	0.8%	19.5%	18 456.1	18 605.8	961.7	6 686.6
TERNA	4.6405	2.1%	-4.8%	9 139.4	9 327.3	748.3	4 493.7
UBI BANCA	3.2955	1.4%	-10.5%	3 719.5	3 771.0	869.5	5 784.7
UNICREDIT	14.3480	0.4%	-8.6%	31 885.2	31 998.5	6 663.3	36 412.5
UNIPOL	3.3362	-9.9%	-15.0%	2 655.7	2 393.6	230.1	1 703.9
UNIPOLSAI	1.9102	0.9%	-2.3%	5 359.2	5 405.4	450.4	2 532.4

Markets Analysis
 Piazza degli Affari, 6 - 20123 Milano
 T +39 02 724261 | Fax +39 02 8646.4323
 e-mail: markets_analysis@borsaitaliana.it
 www.borsaitaliana.it

This document contains text, data, graphics, photographs, illustrations, artwork, names, logos, trade marks, service marks and information ("Information") connected with Borsa Italiana S.p.A. ("Borsa Italiana").

All reasonable efforts have been made to ensure that the Information in this document was correct at the time of publication. However, Borsa Italiana Spa accepts no liability for decisions taken, or systems-related or other work carried out by any party based on this document. The publication of this document does not represent solicitation, by Borsa Italiana, of public saving and is not to be considered as a recommendation by Borsa Italiana as to the suitability of the investment, if any, herein described.

© June 2018 Borsa Italiana S.p.A. All rights reserved.