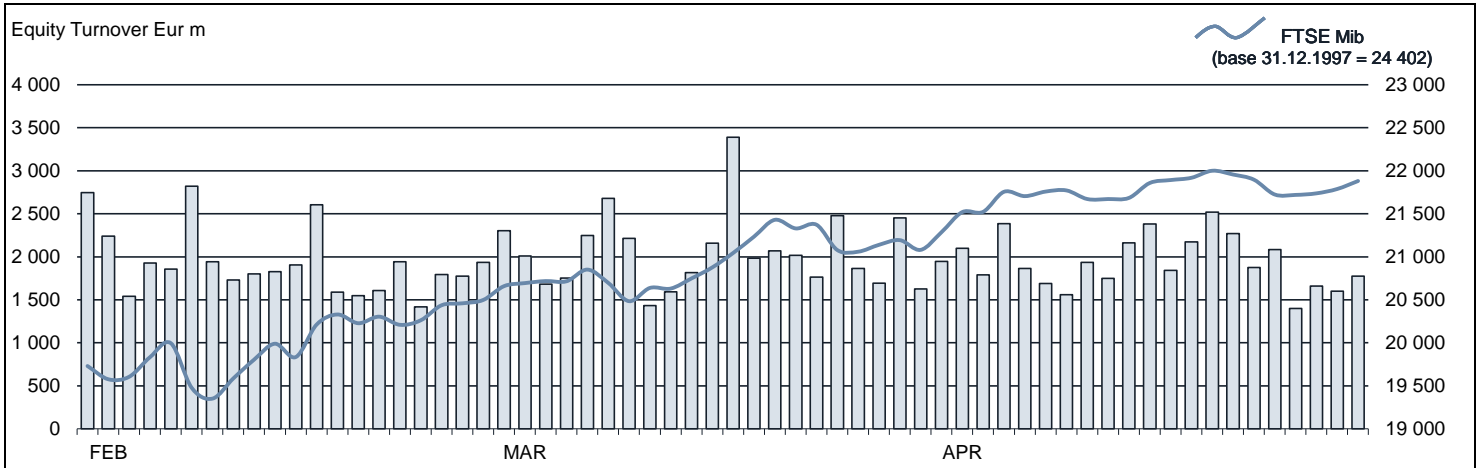




EQUITY DAILY TURNOVER AND FTSE MIB EVOLUTION



FTSE MIB SHARES (BASKET UPDATED AS FROM 18.03.2019)

	PRICE (eur)			CAPITALISATION (eur m)		TURNOVER (eur m)	
	30 APR 2019	Var % MoM	VAR % 2018 END	29 MAR 2019	30 APR 2019	APR 2019	JAN-APR 2019
A2A	1.4829	-8.7%	-5.8%	5 088.8	4 645.6	405.1	1 175.3
AMPLIFON	17.1842	-0.3%	22.3%	3 902.3	3 890.1	179.2	790.5
ATLANTIA	24.1630	5.6%	34.0%	18 890.8	19 953.4	549.6	2 429.2
AZIMUT HOLDING	18.0337	19.2%	90.0%	2 167.5	2 583.4	814.3	2 339.8
BANCA GENERALI	25.2783	14.3%	40.0%	2 585.1	2 953.8	229.3	804.9
BANCO BPM	2.1193	15.0%	7.8%	2 792.2	3 211.1	1 031.2	4 712.8
BPER BANCA	4.2278	15.9%	26.4%	1 756.1	2 034.9	344.5	1 329.0
BUZZI UNICEM	19.7060	8.8%	31.4%	2 994.5	3 258.4	305.2	950.4
CAMPARI	8.9818	2.6%	21.8%	10 165.5	10 433.2	396.6	1 670.8
CNH INDUSTRIAL	9.6985	6.7%	23.6%	12 397.3	13 232.6	516.5	2 064.5
DIASORIN	87.1472	-2.6%	23.5%	5 005.6	4 875.7	196.7	734.0
ENEL	5.6101	-1.5%	10.9%	57 888.6	57 035.8	2 619.8	12 251.7
ENI	15.1757	-3.2%	10.6%	56 988.7	55 151.4	3 403.9	13 229.0
EXOR	59.5137	2.8%	26.5%	13 953.7	14 342.8	411.3	1 649.1
FERRARI	120.9907	1.6%	39.8%	23 092.0	23 462.9	1 028.9	4 453.7
FIAT CHRYSLER AUTOMOBILES	13.7462	3.9%	8.2%	20 506.8	21 301.8	3 006.4	11 603.5
FINECOBANK	11.7796	1.2%	34.8%	7 088.2	7 172.8	563.0	1 646.0
GENERALI	17.2576	4.8%	18.3%	25 762.4	27 087.5	1 683.4	7 051.9
HERA	3.1693	-1.8%	18.5%	4 808.8	4 720.7	260.9	1 049.0
INTESA SANPAOLO	2.3339	7.5%	20.2%	38 016.2	40 864.6	5 176.5	21 417.7
ITALGAS	5.5552	1.1%	11.4%	4 446.2	4 494.9	185.3	813.4
JUVENTUS FOOTBALL CLUB	1.2563	-16.3%	16.0%	1 513.1	1 266.1	696.9	2 589.1
LEONARDO	10.3294	-0.1%	35.0%	5 978.0	5 972.0	492.9	2 271.2
MEDIOBANCA	9.4667	2.5%	28.4%	8 195.6	8 399.0	602.8	2 525.6
MONCLER	36.6105	1.9%	27.2%	9 183.6	9 443.6	632.9	3 157.4
PIRELLI & C	6.5164	13.4%	15.8%	5 745.4	6 516.4	294.7	1 134.6
POSTE ITALIANE	9.4805	9.7%	36.1%	11 289.1	12 382.6	607.4	2 112.6
PRYSMIAN	17.0544	1.7%	1.3%	4 498.4	4 573.0	793.0	2 706.3
RECORDATI	36.1864	4.4%	18.0%	7 251.2	7 567.5	225.4	1 155.7
SAIPEM	4.5538	-3.4%	40.2%	4 765.1	4 603.7	866.1	3 298.5
SALVATORE FERRAGAMO	20.4460	7.4%	14.2%	3 214.6	3 451.1	222.7	831.1
SNAM	4.5259	-1.4%	18.5%	15 921.7	15 364.8	839.1	3 573.5
STMICROELECTRONICS	16.3105	24.9%	34.0%	11 895.3	14 861.7	1 799.3	6 195.3
TELECOM ITALIA	0.4989	-9.6%	2.8%	8 390.7	7 585.1	869.6	4 985.1
TENARIS	12.4316	-0.7%	32.0%	14 783.1	14 675.9	758.9	3 304.8
TERNA	5.3457	-5.2%	7.9%	11 328.6	10 744.9	646.2	2 794.2
UBI BANCA	2.7780	18.2%	9.7%	2 689.5	3 178.9	520.4	2 131.5
UNICREDIT	12.3366	8.4%	25.5%	25 372.4	27 552.4	4 204.0	15 976.5
UNIPOL	4.5059	1.7%	28.4%	3 178.4	3 232.8	243.8	1 178.0
UNIPOLSAI	2.4398	1.7%	23.9%	6 789.0	6 903.9	194.7	967.5