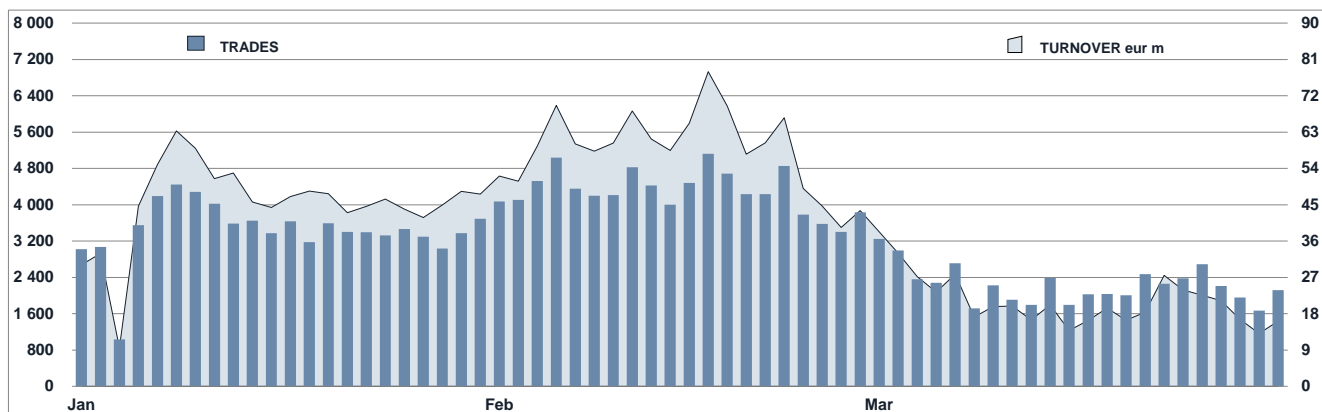




Cert - X Statistics

March 2020

DAILY TURNOVER



MAIN INDICATORS

	LISTED					TRADING					
	DEC 2019 LISTED END OF MONTH	FEBRUARY 2020 LISTED END OF MONTH	NEW LISTED MONTH	MARCH 2020 LISTED END OF MONTH	NEW LISTED MONTH	FEBRUARY 2020 TRADES number	TURNOVER eur m	MARCH 2020 TRADES number	TURNOVER eur m	JAN - MAR 2020 TRADES number	TURNOVER eur m
MARKET SEGMENTS											
CAPITAL PROTECTED/GUARANTEED INSTRUMENTS	317	352	30	359	13	29 966	489.2	9 361	122.1	65 059	999.3
CONDITIONALLY PROTECTED INSTRUMENTS	2 593	2 840	183	2 915	173	55 454	673.2	39 413	335.5	144 299	1 604.4
NON-PROTECTED INSTRUMENTS	130	135	3	137	4	398	8.4	445	10.6	1 188	27.0
LEVERAGE INSTRUMENTS	63	63	-	58	-	2	0.0	1	0.0	4	0.0
CW PLAIN VANILLA	8	11	1	10	-	115	1.4	30	0.2	222	2.4
STRUCTURED/EXOTIC CW	1	1	-	1	-	-	-	-	-	-	-
TOTAL	3 112	3 402	217	3 480	190	85 935	1 172.2	49 250	468.4	210 772	2 633.1
UNDERLYING ASSETS											
DOMESTIC SHARES	523	601	28	591	28	14 572	213.6	7 635	71.9	32 702	431.4
DOMESTIC INDICES (*)	49	48	1	42	-	2 168	30.2	418	3.1	4 468	56.9
FOREIGN SHARES	380	441	28	443	18	9 692	128.8	4 086	34.5	22 365	283.6
FOREIGN INDICES (**)	494	519	24	519	18	27 141	418.1	10 797	136.9	61 705	900.3
COMMODITIES (***)	28	33	2	32	-	991	25.9	305	7.1	1 914	48.9
INTEREST RATE (****)	63	63	-	58	-	2	0.0	1	0.0	4	0.0
CROSS RATE (*****)	36	33	-	28	-	374	4.0	136	1.7	809	8.5
OTHERS	1 539	1 664	134	1 767	126	30 995	351.6	25 872	213.1	86 805	903.4
TOTAL	3 112	3 402	217	3 480	190	85 935	1 172.2	49 250	468.4	210 772	2 633.1
(*) Futures on Domestic Indices are included (**) Futures on Foreign Indices are included (***) Futures on Commodities are included (****) Futures on Interest rate are included (*****) Futures on Cross rate are included											
ISSUERS											
BANCA AKROS SPA	23	34	6	37	3	2 137	44.7	1 300	18.9	5 106	94.8
BANCA IMI SPA	196	209	17	212	6	23 795	327.2	9 418	98.6	51 669	653.1
BNP PARIBAS ISSUANCE BV	953	953	47	977	42	13 266	141.5	6 195	58.3	32 710	332.2
BNP PARIBAS SA	-	-	-	-	-	-	-	-	-	-	-
BPER SPA	4	4	-	3	-	73	1.1	34	0.5	172	2.5
CITIGROUP GLOBAL MKT	32	42	5	44	2	2 809	33.8	1 880	17.5	8 113	98.2
CREDIT AGRICOLE CIB FIN SOL SA	21	16	-	15	2	7	0.0	3	0.0	35	0.5
CREDIT SUISSE AG	26	30	1	33	3	1 617	18.4	2 863	22.3	6 328	65.6
CREDIT SUISSE INTERNATIONAL	6	6	-	7	1	77	0.6	83	2.8	214	4.0
DEUTSCHE BANK AG	64	62	1	59	-	1 323	16.3	302	2.6	3 030	39.2
EXANE FINANCE	255	282	13	300	29	3 419	46.3	2 298	22.0	7 679	93.7
GOLDMAN SACHS INTERNATIONAL	53	62	9	63	2	1 864	22.8	1 048	7.4	4 606	51.6
GS FIN CORP INTERNATIONAL	58	74	10	79	6	764	10.2	851	6.7	2 250	26.0
ING BANK NV	2	2	-	2	-	-	-	2	0.1	13	0.3
J.P. MORGAN STRUCTURED PRODUCTS BV	9	12	2	13	1	59	0.5	89	0.7	501	3.8
LEONTEO SECURITIES AG	408	446	36	467	33	11 030	123.3	13 769	107.2	34 414	333.7
MEDIOBANCA INTERNATIONAL	2	2	-	2	-	-	-	1	0.0	1	0.0
MEDIOBANCA SPA	125	142	10	155	13	1 285	15.1	514	5.2	2 829	34.7
MORGAN STANLEY & CO. INTERNATIONAL	5	4	-	4	-	3	0.0	2	0.1	6	0.2
MORGAN STANLEY BV	34	30	1	33	3	141	2.0	168	1.5	494	6.0
MPS SPA	1	1	-	1	-	100	1.1	47	0.5	266	2.9
NATIXIS STRUCTURED ISSUANCE SA	13	17	3	21	4	98	1.5	205	1.4	329	3.2
SECURASSET SA	16	16	-	16	-	866	6.8	107	0.7	1 777	14.0
SG ISSUER SA	186	215	18	233	22	4 824	55.4	2 083	22.4	10 596	126.5
SMARTETN PLC	10	13	1	15	2	68	8.2	67	3.5	177	16.0
SOCIÉTÉ GÉNÉRALE SA	2	2	-	2	-	-	-	-	-	-	-
UBI BANCA SPA	-	4	2	4	-	11	0.1	16	0.2	49	0.5
UBS AG	36	42	5	45	3	230	2.8	421	4.7	991	11.2
UNICREDIT BANK AG	510	611	28	565	9	6 201	88.2	3 662	36.9	15 470	202.0
UNICREDIT SPA	62	69	2	73	4	9 868	204.3	1 822	25.5	20 947	416.4
TOTAL	3 112	3 402	217	3 480	190	85 935	1 172.2	49 250	468.4	210 772	2 633.1

CERTIFICATES - TURNOVER BY ACEPI TYPE

LISTED				TRADING						
	DECEMBER 2019		MARCH 2020		FEBRUARY 2020		MARCH 2020		JAN - MAR 2020	
	LISTED END of MONTH		LISTED END of MONTH	NEW LISTED MONTH	TRADES number	TURNOVER eur m	TRADES number	TURNOVER eur m	TRADES number	TURNOVER eur m
AIRBAG	2		2	-	17	0.1	9	0.0	47	0.2
BENCHMARK	119		124	3	356	8.1	424	10.5	1 071	25.5
BONUS	402		437	3	6 928	70.4	4 496	34.6	16 588	158.2
BONUS CP	1		3	-	14	3.2	8	1.8	22	4.9
BUTTERFLY	-		-	-	-	-	-	-	-	-
CASH COLLECT	219		253	12	4 134	64.3	2 302	28.0	10 052	149.0
DIRECTIONAL	63		58	-	2	0.0	1	0.0	4	0.0
DISCOUNT	-		-	-	-	-	-	-	-	-
DOUBLE WIN	-		-	-	-	-	-	-	-	-
EQUITY PROTECTION	313		353	13	29 932	485.1	9 343	120.1	65 007	993.3
EXPRESS	1 951		2 209	158	44 012	533.0	32 196	270.0	116 447	1 282.4
MINI FUTURES	-		-	-	-	-	-	-	-	-
OUTPERFORMANCE	11		13	1	42	0.3	21	0.1	117	1.5
RELATIVE VALUE	-		-	-	-	-	-	-	-	-
TURBO & SHORT	-		-	-	-	-	-	-	-	-
TWIN WIN	19		14	-	363	5.3	410	2.9	1 165	14.5
TWIN WIN CP	3		3	-	20	0.9	10	0.2	30	1.1
TOTAL	3 103		3 469	190	85 820	1 170.8	49 220	468.2	210 550	2 630.7

CERTIFICATES

FIRST TEN LEVERAGE INSTRUMENTS IN TERMS OF TURNOVER TRADED IN MARCH 2020										
ISIN	Issuer	Faculty	Underlying	Strike	Barrier	Expiration Date	Turnover eur m	% TOT	% CUM	Trades
1 XS1386449448	BNP PARIBAS ISSUANCE BV	BULL	EURIBOR(1M)	-	-	30/03/2021	0.0	100.0%	100.0%	1
2										
3										
4										
5										
6										
7										
8										
9										
10										

FIRST TEN CAPITAL PROTECTED/GUARANTEED INSTRUMENTS IN TERMS OF TURNOVER TRADED IN MARCH 2020										
ISIN	Issuer	Protection Level	Underlying	Expiration Date	Turnover eur m	% TOT	% CUM	Trades		
1 IT0005359275	BANCA AKROS SPA	100	EURO STOXX SELECT DIVIDEND 30	16/02/2024	6.0	4.9%	4.9%	328		
2 XS1978675236	BANCA IMI SPA	100	EURO STOXX SELECT DIVIDEND 30	08/05/2025	4.2	3.5%	8.4%	317		
3 IT0005333767	BANCA IMI SPA	100	EURO STOXX SELECT DIVIDEND 30	27/06/2025	4.1	3.3%	11.7%	245		
4 IT0005274177	BANCA IMI SPA	100	EURO STOXX SELECT DIVIDEND 30	31/07/2024	3.9	3.2%	14.9%	346		
5 IT0005203969	BANCA AKROS SPA	100	EURO STOXX SELECT DIVIDEND 30	17/07/2023	3.6	2.9%	17.8%	273		
6 IT0005282949	BANCA IMI SPA	100	EURO STOXX SELECT DIVIDEND 30	31/10/2024	3.2	2.6%	20.5%	419		
7 XS1602583814	BANCA IMI SPA	90	DIVDAX	31/05/2023	3.0	2.5%	22.9%	227		
8 XS1273328515	CITIGROUP GLOBAL MKT	100	ORO	09/01/2024	2.7	2.2%	25.2%	42		
9 XS162078624	BANCA IMI SPA	100	EURO STOXX SELECT DIVIDEND 30	01/07/2024	2.7	2.2%	27.4%	234		
10 XS1995013999	BANCA IMI SPA	100	S&P 500	31/05/2024	2.2	1.8%	29.2%	103		

FIRST TEN CONDITIONALLY PROTECTED INSTRUMENTS IN TERMS OF TURNOVER TRADED IN MARCH 2020										
ISIN	Issuer	Protection Level	Underlying	Expiration Date	Turnover eur m	% TOT	% CUM	Trades		
1 CH0470804656	LEONTEO SECURITIES AG		4 ITALIAN SHARES	25/04/2024	9.8	2.9%	2.9%	1735		
2 XS1975169114	CREDIT SUISSE AG		BASKET 4 EUROPE	24/01/2025	4.1	1.2%	4.1%	595		
3 CH0419581431	LEONTEO SECURITIES AG		4 AZIONI ITALIA	27/08/2023	3.7	1.1%	5.2%	348		
4 CH0456759387	LEONTEO SECURITIES AG		BASKET 3 ITALY SHARES	13/02/2023	3.3	1.0%	6.2%	415		
5 DE000HV44672	UNICREDIT BANK AG		INTESA SANPAOLO	18/06/2020	2.9	0.9%	7.1%	150		
6 CH0423433579	LEONTEO SECURITIES AG		2 BANCHE ITALIA	09/08/2021	2.5	0.8%	7.9%	361		
7 CH0404889250	LEONTEO SECURITIES AG		BSKT 3 INDICI	18/04/2023	2.4	0.7%	8.6%	274		
8 CH0478386284	LEONTEO SECURITIES AG		2 AZIONI ENERGIA ITA	29/05/2024	2.4	0.7%	9.3%	186		
9 XS1575032351	CITIGROUP GLOBAL MKT		BSK ENERGIA ITALIA	25/03/2024	2.3	0.7%	10.0%	176		
10 IT0005380909	BANCA IMI SPA		AZIONE APPLE	30/08/2023	2.2	0.7%	10.7%	85		

FIRST TEN NON-PROTECTED INSTRUMENTS INSTRUMENTS IN TERMS OF TURNOVER TRADED IN MARCH 2020										
ISIN	Issuer	Underlying	Expiration Date	Turnover eur m	% TOT	% CUM	Trades			
1 XS0998121338	SG ISSUER SA	DEBITO 10 IMPRESE	12/04/2021	1.7	16.4%	16.4%	8			
2 XS1101886338	SG ISSUER SA	DEBITO 8 IMPRESE GLOBAL	12/10/2020	1.7	16.2%	32.6%	1			
3 XS1520283349	CREDIT SUISSE INTERNATIONAL	BSK 2 CREDIT SUISSE USD INDICES	31/12/9999	1.4	13.4%	46.0%	30			
4 XS1520282374	CREDIT SUISSE INTERNATIONAL	BSK 2 CREDIT SUISSE EUR INDICES	31/12/9999	1.2	11.2%	57.2%	49			
5 CH0377603021	LEONTEO SECURITIES AG	TRACKER BOND ON PENDRAGON REAL ESTATE FUND	18/04/2023	0.6	5.6%	63.1%	8			
6 DE000HV40U00	UNICREDIT BANK AG	EURO STOXX 50 NET RETURN EUR	31/12/9999	0.6	5.4%	68.4%	73			
7 DE000HV40U06	UNICREDIT BANK AG	FTSE MIB (NET RETURN) INDEX	31/12/9999	0.4	4.0%	72.5%	100			
8 XS1037612477	SG ISSUER SA	DEBITO 8 IMPRESE EU-US	12/10/2020	0.4	3.6%	76.1%	9			
9 DE000HV40U02	UNICREDIT BANK AG	S&P 500 (NET RETURN) INDEX - EUR/USD (BBG)	31/12/9999	0.4	3.5%	79.5%	48			
10 DE000HV498N6	UNICREDIT BANK AG	STOXX EUROPE 600	31/12/9999	0.3	2.8%	82.3%	10			

MOST TRADED UNDERLYING ASSETS (INDEX/SINGLE SHARES) IN TERMS OF TURNOVER

UNDERLYING	MARCH 2020 TURNOVER eur m	% TOT	% CUM
EURO STOXX SELECT DIVIDEND 30	52.5	21.3%	21.3%
EURO STOXX 50	25.3	10.3%	31.6%
INTESA SANPAOLO	22.9	9.3%	40.9%
ENI	14.7	6.0%	46.9%
S&P 500 TOTAL RETURN	10.7	4.4%	51.2%
ENEL	10.3	4.2%	55.4%
S&P 500	9.3	3.8%	59.2%
UNICREDIT	8.0	3.3%	62.4%
AZIONE ASSICURAZIONI GENERALI	7.3	3.0%	65.4%
EURO STOXX BANKS	6.1	2.5%	67.9%

MOST TRADED UNDERLYING ASSETS (OTHER) IN TERMS OF TURNOVER

UNDERLYING	MARCH 2020 TURNOVER eur m	% TOT	% CUM
4 ITALIAN SHARES	10.3	4.7%	4.7%
ORO	6.5	2.9%	7.6%
4 AZIONI ITALIA	6.0	2.7%	10.3%
2 AZIONI ENERGIA ITA	5.5	2.5%	12.7%
2 BANCHE ITALIA	4.4	2.0%	14.7%
BASKET 4 EUROPE	4.1	1.9%	16.6%
BASKET 3 AZIONI	3.9	1.7%	18.3%
BASKET 3 ITALY SHARES	3.6	1.6%	20.0%
BSKT 3 INDICI	3.2	1.5%	21.4%
BASKET 4 INDICI	2.5	1.1%	22.6%

News

Markets Analysis
 Piazza degli Affari, 6 - 20123 Milano
 T +39 02 724261 | Fax +39 02 8646.4323
 e-mail: markets_analysis@borsaitaliana.it
 www.borsaitaliana.it

This document contains text, data, graphics, photographs, illustrations, artwork, names, logos, trade marks, service marks and information ("Information") connected with Borsa Italiana S.p.A. ("Borsa Italiana"). All reasonable efforts have been made to ensure that the Information in this document was correct at the time of publication. However, Borsa Italiana SpA accepts no liability for decisions taken, or systems-related or other work carried out by any party based on this document. The publication of this document does not represent solicitation, by Borsa Italiana, of public saving and is not to be considered as a recommendation by Borsa Italiana as to the suitability of the investment, if any, herein described.

