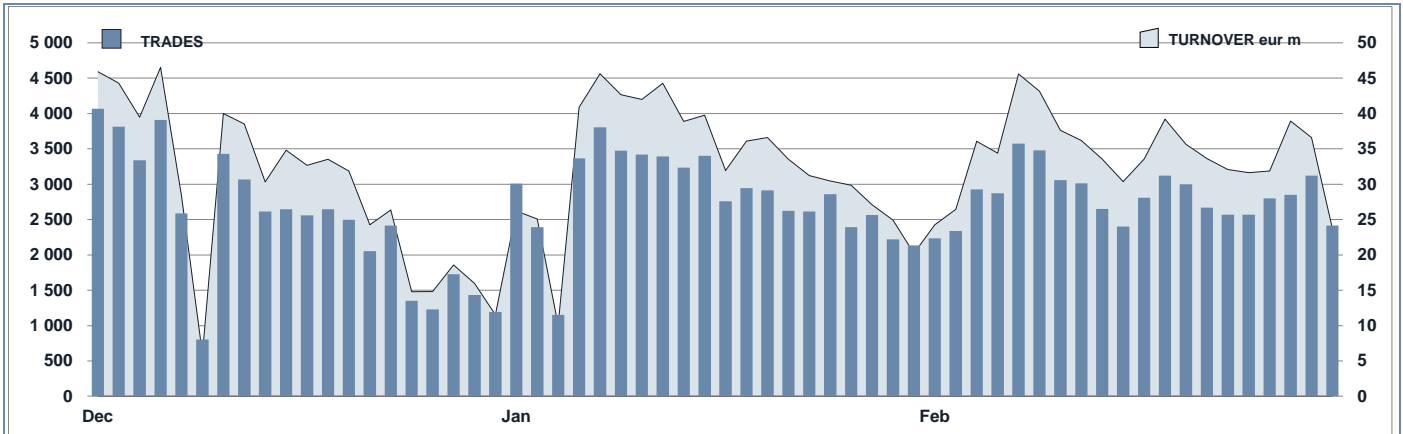




DAILY TURNOVER



MAIN INDICATORS

	LISTED					TRADING														
	DEC 2020		JANUARY 2021		FEBRUARY 2021		JANUARY 2021		FEBRUARY 2021		JAN - FEB 2021									
	LISTED	END of MONTH	LISTED	END of MONTH	NEW LISTED	END of MONTH	NEW LISTED	MONTH	TRADES	number	TURNOVER	eur m	TRADES	number	TURNOVER	eur m	TRADES	number	TURNOVER	eur m
MARKET SEGMENTS																				
CAPITAL PROTECTED/GUARANTEED INSTRUMENTS	411	412	5	413	8	15 093	233.0	13 753	226.5	28 846	459.4									
CONDITIONALLY PROTECTED INSTRUMENTS	3 025	3 033	108	3 065	144	40 699	409.7	41 994	437.6	82 693	847.3									
NON-PROTECTED INSTRUMENTS	146	146	4	145	9	744	12.8	617	18.6	1 361	31.4									
LEVERAGE INSTRUMENTS	42	42	-	42	-	-	-	-	-	-	-									
CW PLAIN VANILLA	10	10	-	10	-	3	0.0	1	0.0	4	0.0									
STRUCTURED/EXOTIC CW	15	16	1	27	4	117	2.0	113	1.9	230	3.9									
TOTAL	3 649	3 659	118	3 702	165	56 656	657.4	56 478	684.5	113 134	1 342.0									
UNDERLYING ASSETS																				
DOMESTIC SHARES	518	490	7	484	9	10 418	160.1	10 071	148.2	20 489	308.3									
DOMESTIC INDICES (*)	47	46	-	47	1	323	5.3	340	4.5	663	9.7									
FOREIGN SHARES	466	498	37	514	28	6 472	64.6	6 342	66.1	12 814	130.7									
FOREIGN INDICES (**)	633	638	10	637	17	16 007	225.0	14 458	223.7	30 465	448.7									
COMMODITIES (***)	32	30	-	31	1	86	1.9	96	1.9	182	3.9									
INTEREST RATE (****)	42	43	1	43	-	-	-	-	-	-	-									
CROSS RATE (*****)	29	36	7	37	1	105	0.7	227	1.7	332	2.5									
OTHERS	1 882	1 878	56	1 909	108	23 245	199.8	24 944	238.5	48 189	438.3									
TOTAL	3 649	3 659	118	3 702	165	56 656	657.4	56 478	684.5	113 134	1 342.0									
(*) Futures on Domestic Indices are included																				
(**) Futures on Foreign Indices are included																				
(***) Futures on Commodities are included																				
(****) Futures on Interest rate are included																				
(*****) Futures on Cross rate are included																				
ISSUERS																				
BANCA AKROS	47	47	-	47	-	4 336	86.7	3 547	73.2	7 883	159.9									
BANCA MONTE PASCHI SIENA	1	1	-	1	-	88	0.8	98	1.1	186	1.9									
BANCO BPM	7	9	2	10	1	100	2.0	167	2.9	267	4.9									
BNP PARIBAS ISSUANCE	995	990	19	998	41	12 889	105.3	11 812	109.8	24 701	215.1									
BPER BANCA	1	1	-	1	-	2	0.0	4	0.0	6	0.1									
CITIGROUP GLOBAL MARKETS FUNDING LU	78	87	10	89	7	2 617	22.3	3 388	28.7	6 005	51.0									
CREDIT AGRICOLE CIB FINANCIAL SOLUT	23	21	-	22	3	42	0.9	35	0.9	77	1.8									
CREDIT SUISSE	33	35	2	33	1	820	9.5	1 029	12.8	1 849	22.4									
CREDIT SUISSE INTERNATIONAL	6	6	-	6	-	2	0.0	6	0.3	8	0.3									
DEUTSCHE BANK AG	53	52	-	53	1	531	7.4	917	11.5	1 448	18.9									
EFG INTERNATIONAL FINANCE	31	52	23	60	9	316	3.2	449	5.7	765	8.9									
EXANE FINANCE	260	255	-	236	-	1 949	17.3	2 112	19.2	4 061	36.5									
EXANE SOLUTIONS	-	1	1	7	6	-	-	152	0.7	152	0.7									
GOLDMAN SACHS FIN CORP INT	116	118	6	118	6	1 925	18.0	2 094	24.1	4 019	42.1									
GOLDMAN SACHS INTERNATIONAL	73	74	2	75	2	1 930	19.4	1 532	15.3	3 462	34.7									
INTESA SANPAOLO	212	209	1	211	4	8 929	104.7	9 565	119.6	18 494	224.3									
JP MORGAN STRUCTURED PRODUCTS B.V	13	13	-	13	-	16	0.5	15	0.4	31	0.9									
LEONTEQ SECURITIES	491	477	7	471	13	5 600	46.6	5 754	54.7	11 354	101.3									
MEDIOBANCA	217	223	9	233	13	570	10.8	872	17.0	1 442	27.8									
MEDIOBANCA INTERNATIONAL	5	8	3	12	4	-	-	1	0.0	1	0.0									
MORGAN STANLEY & CO. INTERNATIONAL	1	1	-	1	-	-	-	-	-	-	-									
MORGAN STANLEY BV	32	32	-	30	-	94	1.6	72	0.7	166	2.3									
NATIXIS STRUCTURED ISSUANCE	21	20	1	19	-	75	1.2	114	1.5	189	2.6									
SECURASSET SA	13	13	-	13	-	1 062	7.4	529	3.6	1 591	10.9									
SMARTETN PLC	36	39	3	45	7	405	7.5	1 289	15.7	1 694	23.2									
SOCIETE GENERALE	2	2	-	2	-	-	-	-	-	-	-									
SOCIETE GENERALE ISSUER	287	284	11	286	17	2 021	23.6	2 303	23.7	4 324	47.4									
UBS AG	54	63	10	65	5	874	8.2	1 185	10.7	2 059	18.9									
UNICREDIT	123	125	6	124	2	5 883	108.5	4 502	89.1	10 385	197.6									
UNICREDIT BANK	411	394	2	414	23	2 595	31.0	2 630	37.5	5 225	68.5									
UNIONE DI BANCHE ITALIANE	7	7	-	7	-	985	13.0	305	4.2	1 290	17.2									
TOTAL	3 649	3 659	118	3 702	165	56 656	657.4	56 478	684.5	113 134	1 342.0									

CERTIFICATES - TURNOVER BY ACEPI TYPE

	LISTED			TRADING						
	DECEMBER 2020		FEBRUARY 2021		JANUARY 2021		FEBRUARY 2021		JAN - FEB 2021	
	LISTED END OF MONTH	LISTED END OF MONTH	NEW LISTED MONTH	TRADES number	TURNOVER eur m	TRADES number	TURNOVER eur m	TRADES number	TURNOVER eur m	
AIRBAG	1	1	-	-	-	1	0.0	1	0.0	
BENCHMARK	127	125	9	678	11.9	546	17.7	1 224	29.6	
BONUS	334	336	11	2 699	26.3	2 861	29.0	5 560	55.3	
BONUS CP	3	2	-	2	0.0	1	0.0	3	0.1	
BUTTERFLY	1	1	-	1	0.0	1	0.0	2	0.0	
CASH COLLECT	375	415	47	6 648	96.6	5 854	82.2	12 502	178.8	
DIRECTIONAL	42	42	-	-	-	-	-	-	-	
DISCOUNT	-	-	-	-	-	-	-	-	-	
DOUBLE WIN	-	-	-	-	-	-	-	-	-	
EQUITY PROTECTION	405	410	8	15 090	232.9	13 751	226.4	28 841	459.3	
EXPRESS	2 298	2 293	84	31 259	285.9	33 147	325.1	64 406	611.0	
MINI FUTURES	-	-	-	-	-	-	-	-	-	
OUTPERFORMANCE	19	20	-	66	0.9	71	0.9	137	1.8	
RELATIVE VALUE	-	-	-	-	-	-	-	-	-	
TURBO & SHORT	-	-	-	-	-	-	-	-	-	
TWIN WIN	17	20	2	93	0.9	131	1.3	224	2.2	
TWIN WIN CP	2	-	-	-	-	-	-	-	-	
TOTAL	3 624	3 665	161	56 536	655.4	56 364	682.6	112 900	1 338.0	

CERTIFICATES

FIRST TEN LEVERAGE INSTRUMENTS IN TERMS OF TURNOVER TRADED IN FEBRUARY 2021

ISIN	Issuer	Facuty	Underlying	Strike	Barrier	Expiration Date	Turnover eur m	% TOT	% CUM	Trades

FIRST TEN CAPITAL PROTECTED/GUARANTEED INSTRUMENTS IN TERMS OF TURNOVER TRADED IN FEBRUARY 2021

ISIN	Issuer	Protection Level	Underlying	Expiration Date	Turnover eur m	% TOT	% CUM	Trades
1 IT0005364481	BANCA AKROS	100	EURO STOXX 50	15/03/2024	23.6	10.4%	10.4%	1107
2 IT0005367856	BANCA AKROS	100	EURO STOXX UTILITIES	19/04/2024	15.3	6.8%	17.2%	683
3 IT0005359275	BANCA AKROS	100	EURO STOXX SELECT DIVIDEND 30	16/02/2024	11.0	4.8%	22.0%	500
4 IT0005413882	UNICREDIT	100	ENI	31/07/2028	10.0	4.4%	26.4%	502
5 XS2173122857	INTESA SANPAOLO	100	EURO STOXX SELECT DIVIDEND 30	23/06/2026	8.2	3.6%	30.0%	274
6 IT0005274177	INTESA SANPAOLO	100	EURO STOXX SELECT DIVIDEND 30	31/07/2024	8.1	3.6%	33.6%	528
7 XS2122412617	INTESA SANPAOLO	100	S&P 500	09/03/2026	7.7	3.4%	37.0%	198
8 IT0005282949	INTESA SANPAOLO	100	EURO STOXX SELECT DIVIDEND 30	31/10/2024	5.3	2.3%	39.4%	407
9 IT0005281917	INTESA SANPAOLO	90	EURO STOXX 50	27/09/2024	4.5	2.0%	41.3%	344
10 IT0005364465	UNICREDIT	100	STOXX EUROPE SUSTAINABILITY SELECT 30 INDEX	28/03/2024	4.1	1.8%	43.2%	8

FIRST TEN CONDITIONALLY PROTECTED INSTRUMENTS IN TERMS OF TURNOVER TRADED IN FEBRUARY 2021

ISIN	Issuer	Protection Level	Underlying	Expiration Date	Turnover eur m	% TOT	% CUM	Trades
1 IT0005406555	UNICREDIT	100	AZIONE ASSICURAZIONI GENERALI	30/06/2026	16.3	3.7%	3.7%	875
2 IT0005406522	UNICREDIT	100	ENEL	29/05/2026	10.7	2.4%	6.2%	563
3 IT0005406613	UNICREDIT	100	ENI	30/06/2027	10.3	2.4%	8.5%	590
4 XS228324915	SMARTETN PLC	100	TESLAMODERNA/CARNIVAL	16/06/2022	6.4	1.5%	10.0%	995
5 XS1575018103	CITIGROUP GLOBAL MARKETS FUNDING LU	100	EDF/ENEL/PLUG POWER	24/02/2022	4.3	1.0%	11.0%	644
6 DE000H40MS9	UNICREDIT BANK	100	INTESA SANPAOLO	29/03/2021	4.1	0.9%	11.9%	177
7 GB00BKN4VR24	GOLDMAN SACHS INTERNATIONAL	100	STELLANTIS	05/03/2025	3.8	0.9%	12.8%	304
8 DE000XW9ZV14	DEUTSCHE BANK AG	100	INTESA SANPAOLO	04/04/2023	3.6	0.8%	13.6%	305
9 XS208074755	SMARTETN PLC	100	ISHARES USD CORP BOND UCITS ETF	27/12/2023	3.5	0.8%	14.4%	27
10 IT0005406514	UNICREDIT	100	ENEL	28/11/2025	3.5	0.8%	15.2%	201

FIRST TEN NON-PROTECTED INSTRUMENTS IN TERMS OF TURNOVER TRADED IN FEBRUARY 2021

ISIN	Issuer	Underlying	Expiration Date	Turnover eur m	% TOT	% CUM	Trades
1 XS2127721277	BNP PARIBAS ISSUANCE	SDGP INDEX/DEBITO MEOBONCA	30/12/2025	7.4	39.5%	39.5%	67
2 XS2278052779	SOCIETE GENERALE ISSUER	SGI WORLD TRAVEL AND LEISURE INDEX	03/02/2026	2.4	13.0%	52.5%	108
3 XS2189919397	SMARTETN PLC	BASKET 36 AZIONI	12/06/2023	1.2	6.4%	58.9%	10
4 DE000H40JUS2	UNICREDIT BANK	S&P 500 (NET RETURN) INDEX - EUR/USD (BBG)	31/12/9999	1.1	5.7%	64.6%	39
5 FREXA0027856	EXANE FINANCE	BASKET 40 AZIONI	31/12/2099	0.7	3.6%	68.2%	52
6 XS2113427905	BNP PARIBAS ISSUANCE	BSK DEB MEOBONCA SUB-STOXX EU 600 OIL&GAS	29/12/2023	0.5	2.6%	70.8%	3
7 DE000H498M8	UNICREDIT BANK	STOXX ASIA/PACIFIC 600 NR	31/12/9999	0.4	2.4%	73.1%	26
8 XS1941740042	BNP PARIBAS ISSUANCE	DEBITO MEOBONCA SUB	05/07/2022	0.4	2.2%	75.4%	4
9 XS2281466685	SMARTETN PLC	CIRDAN ROYAL FUTURE INDEX	08/01/2026	0.4	2.2%	77.6%	26
10 XS1973461590	CREDIT SUISSE	CREDIT SUISSE US ENHANCED COLLAR EXCESS RETURN IND	31/12/2099	0.4	2.2%	79.8%	29

MOST TRADED UNDERLYING ASSETS (INDEX/SINGLE SHARES)
IN TERMS OF TURNOVER

UNDERLYING	TURNOVER eur m	% TOT	% CUM
EURO STOXX SELECT DIVIDEND 30	78.9	17.8%	17.8%
EURO STOXX 50	50.8	11.5%	29.3%
ENI	39.8	9.0%	38.3%
INTESA SANPAOLO	32.0	7.2%	45.6%
AZIONE ASSICURAZIONI GENERALI	26.3	6.0%	51.5%
ENEL	23.9	5.4%	56.9%
EURO STOXX UTILITIES	17.2	3.9%	60.8%
EURO STOXX BANKS	11.9	2.7%	63.5%
S&P 500	10.4	2.4%	65.9%
Intesa Sanpaolo	6.7	1.5%	67.4%

MOST TRADED UNDERLYING ASSETS (OTHER)
IN TERMS OF TURNOVER

UNDERLYING	TURNOVER eur m	% TOT	% CUM
SDGP INDEX/DEBITO MEOBONCA	7.4	3.0%	3.0%
TESLAMODERNA/CARNIVAL	6.4	2.6%	5.7%
EDF/ENEL/PLUG POWER	4.3	1.8%	7.5%
ISHARES USD CORP BOND UCITS ETF	3.5	1.5%	8.9%
2 INDICI AREA EURO	3.2	1.3%	10.2%
AIRBNBTUI	2.7	1.1%	11.4%
SIEMENS/ERICSSON	2.6	1.1%	12.4%
AMERICAN AIRLINES, INCAIRBUS GROUP SE	2.4	1.0%	13.5%
2 AZIONI ENERGIA ITA	2.4	1.0%	14.4%
BSK NESTLE-BNP	2.2	0.9%	15.4%

News

Markets Analysis
Piazza degli Affari, 6 - 20123 Milano
T +39 02 724261 | Fax +39 02 8646.4323
e-mail: markets_analysis@borsaitaliana.it
www.borsaitaliana.it

This document contains text, data, graphics, photographs, illustrations, artwork, names, logos, trade marks, service marks and information ("Information") connected with Borsa Italiana S.p.A. ("Borsa Italiana"). All reasonable efforts have been made to ensure that the Information in this document was correct at the time of publication. However, Borsa Italiana Spa accepts no liability for decisions taken, or systems-related or other work carried out by any party based on this document. The publication of this document does not represent solicitation, by Borsa Italiana, of public saving and is not to be considered as a recommendation by Borsa Italiana as to the suitability of the investment, if any, herein described.