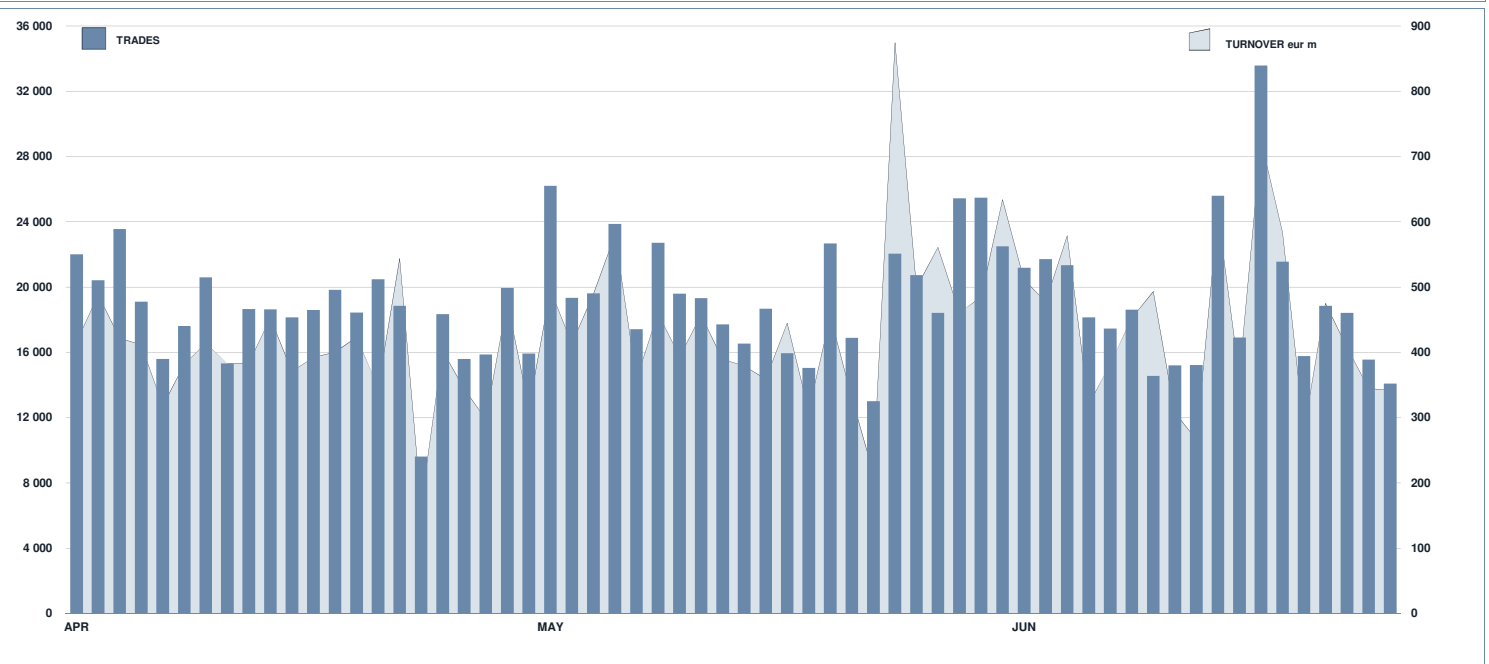




ETFPlus Statistics

June 2019

ETPLUS DAILY TURNOVER



MAIN INDICATORS

	LISTED INSTRUMENT				TRADING					
	LISTED END OF MONTH	MONTH NEW LISTED	AUM in MT		MAY 2019		JUNE 2019		JAN - JUN 2019	
			eur m 31/05/2019	eur m 28/06/2019	Trades eur m	Turnover eur m	Trades eur m	Turnover eur m	Trades eur m	Turnover eur m
ETF - DEVELOPED MARKET	269	0	23 870.50	24 936.27	116 646	3 848.81	90 152	3 529.96	629 374	21 574.50
ETF - CORPORATE AND GOV BOND	306	4	32 434.58	33 556.64	76 913	2 822.90	79 871	2 608.63	473 771	16 353.41
ETF - EMERGING MARKETS	100	4	4 639.94	4 960.77	30 039	777.79	21 830	553.24	164 551	3 859.08
ETF - STYLE	102	0	2 433.73	2 541.56	11 750	199.84	9 561	169.32	62 368	1 155.71
OTHERS	227	12	3 826.19	4 144.97	41 432	636.03	37 755	586.17	221 660	3 250.13
ETC/ETN	317	0	5 924.48	6 025.37	150 338	1 433.37	152 622	1 593.87	908 526	8 743.19
TOTAL	1 321	20	73 129.42	76 165.58	427 118	9 718.75	391 791	9 041.19	2 460 250	54 936.02
						<i>927.52</i>		<i>1 038.11</i>		<i>5 951.21</i>

MOST TRADED IN THE MONTH BY TRADES AND RELATIVE SPREAD

Name	Alphab.	ISIN	TRADES	SPREAD		
			number	% TOT	BBO	25 000 €
1 BOOST WTI OIL 3X LEVERAGE DAILY	3OIL	IE0087ZQC614	20 721	5.3%	0.14%	0.19%
2 BOOST WTI OIL 3X SHORT DAILY	3OIS	IE0087SX5Y86	11 549	2.9%	0.15%	0.22%
3 BOOST NATURAL GAS 3X LEVERAGE DAILY	3NGL	IE0088VC8061	8 633	2.2%	0.41%	0.77%
4 ETFs PHYSICAL GOLD	PHAU	JE00B1V3S770	6 131	1.6%	0.03%	0.03%
5 ETFs 3X DAILY LONG COFFEE	3CFL	JE00BYQY3Z98	4 840	1.2%	0.47%	0.65%
6 XTRACK EUSTX 50 SHD DAILY SWAP UCITS ETF	XSSX	LU0292106753	4 345	1.1%	0.04%	0.08%
7 LYXOR FTSEMB DAI -2X XBR UCITS ETF ACC	XBRMB	FR0010446666	4 177	1.1%	0.09%	0.10%
8 ETFs 3X DAILY SHORT FTSE MB	ITSS	JE00B894R074	4 047	1.0%	0.17%	0.18%
9 ISHARES MSCI WORLD EUR HDG UCITS ETF ACC	IWDE	IE00B441G979	3 793	1.0%	0.05%	0.05%
10 ETFs 3X DAILY LONG WTI CRUDE OIL	3CRL	JE00BYQY8G54	3 561	0.9%	0.20%	0.25%

MOST TRADED IN THE MONTH BY TURNOVER AND RELATIVE SPREAD

Name	Alphab.	ISIN	TURNOVER	SPREAD		
			eur m	% TOT	BBO	25 000 €
1 ISHARES MSCI WORLD EUR HDG UCITS ETF ACC	IWDE	IE00B441G979	190	2.1%	0.05%	0.05%
2 UBS MSCI ACWI SF UCITS ETF EUR HEDG ACC	ACWIE	IE00B441G979	185	2.0%	0.12%	0.12%
3 ISHARES CORE EURO STOXX 50 (DIST) UCITS ETF	EUE	IE0008471009	164	1.8%	0.04%	0.04%
4 ISHARES CORE S&P 500 UCITS ETF USD ACC	CSSPX	IE00B5BMR087	159	1.8%	0.03%	0.03%
5 ISHARES CORE MSCI EM IMI UCITS ETF ACC	EMIE	IE00B8KMGZ66	153	1.7%	0.03%	0.03%
6 BOOST WTI OIL 3X LEVERAGE DAILY	3OIL	IE0087ZQC614	151	1.7%	0.14%	0.19%
7 ISHARES S&P 500 EUR HEDGED UCITS ETF ACC	IUSE	IE00B3ZWK018	131	1.5%	0.05%	0.05%
8 ISHARES HIGH YLD CORP UCITS ETF DIST	IHYG	IE00B66F4759	122	1.3%	0.07%	0.07%
9 ISHARES CORE MSCI WORLD UCITS ETF ACC	SWDA	IE00B4L5Y983	119	1.3%	0.05%	0.05%
10 ISHARES \$ TREASURY 7-10YR UCITS ETF DIST	IBTM	IE00B1FZS798	115	1.3%	0.06%	0.06%

MOST TRADED IN THE YEAR BY TRADES AND RELATIVE SPREAD

Name	Alphab.	ISIN	TRADES	SPREAD		
			number	% TOT	BBO	25 000 €
1 BOOST WTI OIL 3X LEVERAGE DAILY	3OIL	IE0087ZQC614	123 927	5.0%	0.15%	0.19%
2 BOOST WTI OIL 3X SHORT DAILY	3OIS	IE0087SX5Y86	67 403	2.7%	0.15%	0.22%
3 BOOST NATURAL GAS 3X LEVERAGE DAILY	3NGL	IE0088VC8061	60 013	2.4%	0.37%	0.59%
4 LYXOR FTSEMB DAI -2X XBR UCITS ETF ACC	XBRMB	FR0010446666	41 005	1.7%	0.08%	0.10%
5 BOOST NATURAL GAS 3X SHORT DAILY	3NGS	IE00876BR076	36 098	1.5%	0.31%	0.40%
6 ISHARES MSCI WORLD EUR HDG UCITS ETF ACC	IWDE	IE00B441G979	26 875	1.1%	0.06%	0.07%
7 ETFs PHYSICAL GOLD	PHAU	JE00B1V3S770	25 934	1.1%	0.04%	0.04%
8 ISHARES CORE MSCI EM IMI UCITS ETF ACC	EMIE	IE00B8KMGZ66	25 476	1.0%	0.05%	0.05%
9 ETFs 3X DAILY LONG COFFEE	3CFL	JE00BYQY3Z98	25 047	1.0%	0.54%	0.85%
10 LYXOR FTSEMB DAI 2X LEV UCITS ETF DIST	LEVMB	FR0010446658	24 496	1.0%	0.08%	0.09%

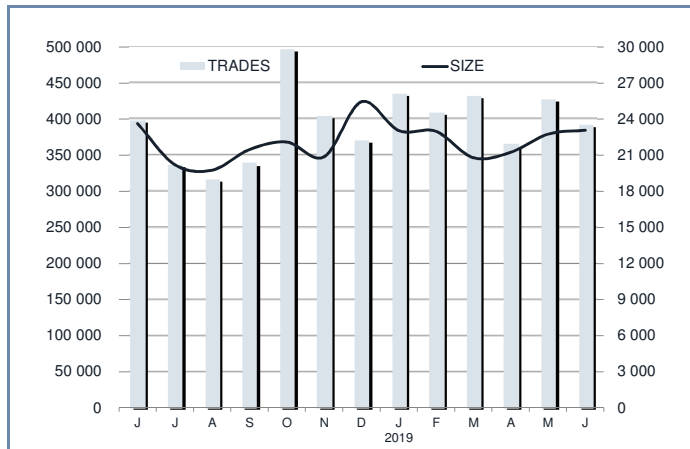
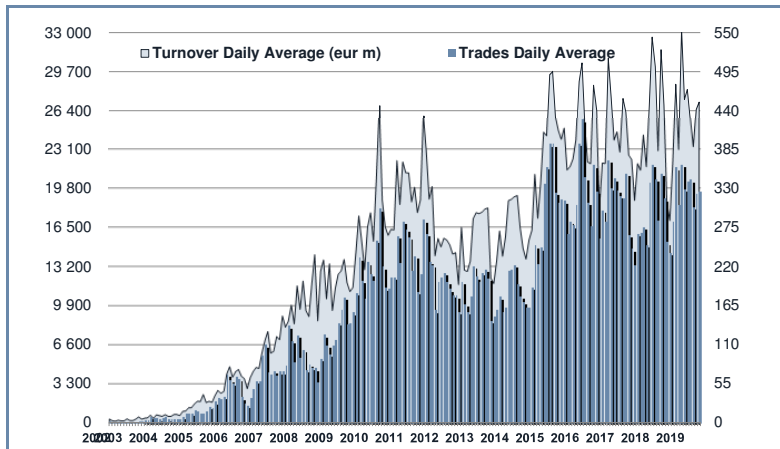
MOST TRADED IN THE YEAR BY TURNOVER AND RELATIVE SPREAD

Name	Alphab.	ISIN	TURNOVER	SPREAD		
			eur m	% TOT	BBO	25 000 €
1 ISHARES S&P 500 EUR HEDGED UCITS ETF ACC	IUSE	IE00B3ZWK018	1 245	2.3%	0.05%	0.06%
2 ISHARES CORE EURO STOXX 50 (DIST) UCITS ETF	EUE	IE0008471009	1 132	2.1%	0.04%	0.04%
3 ISHARES CORE S&P 500 UCITS ETF USD ACC	CSSPX	IE00B5BMR087	1 123	2.0%	0.04%	0.04%
4 BOOST WTI OIL 3X LEVERAGE DAILY	3OIL	IE0087ZQC614	973	1.8%	0.15%	0.19%
5 LYXOR EURO OVERNIGHT RETURN UCITS ETF	LEONIA	FR0010510800	973	1.8%	0.01%	0.01%
6 ISHARES MSCI WORLD EUR HDG UCITS ETF ACC	IWDE	IE00B441G979	789	1.4%	0.06%	0.07%
7 ISHARES CORE MSCI EM IMI UCITS ETF ACC	EMIE	IE00B8KMGZ66	785	1.4%	0.05%	0.05%
8 UBS MSCI EMU UCITS ETF A-DIS	EMUEUA	LU0147308422	759	1.4%	0.06%	0.06%
9 UBS MSCI ACWI SF UCITS ETF EUR HEDG ACC	ACWIE	IE00B441G979	757	1.4%	0.14%	0.14%
10 ISHARES CORE MSCI WORLD UCITS ETF ACC	SWDA	IE00B4L5Y983	735	1.3%	0.05%	0.06%

TRADING BY SIZE OF TURNOVER

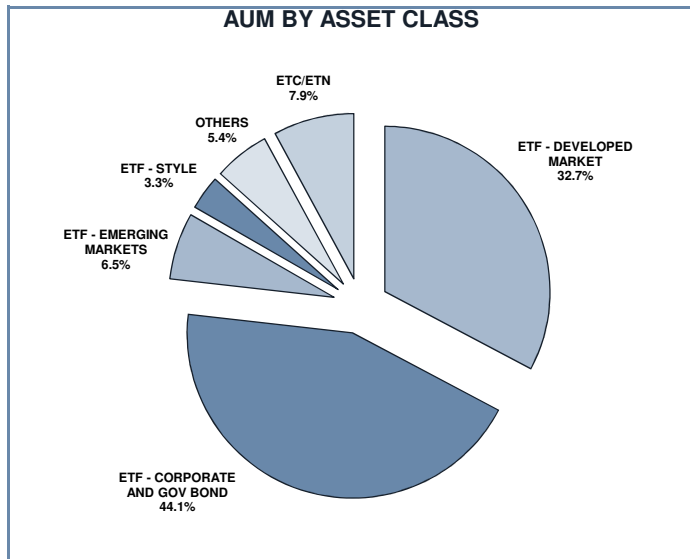
SIZE OF TURNOVER		MAY 2019		JUNE 2019		YEAR 2019			
		Trades	Turnover eur m	Trades	Turnover eur m	Trades	% TOT	Turnover eur m	% TOT
-	500	43 181	10.3	41 909	9.9	257 072	10.4%	58.4	0.1%
500	1 000	35 133	26.9	29 757	22.5	188 709	7.7%	142.1	0.3%
1 000	2 000	49 620	72.3	43 166	63.0	273 727	11.1%	400.0	0.7%
2 000	3 000	36 028	89.2	33 766	83.2	215 712	8.8%	533.5	1.0%
3 000	4 000	26 507	92.1	22 570	78.4	157 669	6.4%	549.9	1.0%
4 000	5 000	25 541	114.8	25 398	114.7	153 838	6.3%	691.8	1.3%
5 000	6 000	19 725	106.9	17 950	97.4	116 182	4.7%	630.9	1.1%
6 000	7 000	12 361	80.1	11 960	77.7	76 898	3.1%	497.4	0.9%
7 000	8 000	11 293	84.6	10 172	75.9	69 846	2.8%	523.3	1.0%
8 000	9 000	9 746	82.7	9 812	83.6	62 940	2.6%	535.6	1.0%
9 000	10 000	10 600	101.3	11 155	106.6	65 008	2.6%	621.5	1.1%
10 000	15 000	34 798	417.0	32 420	385.3	202 575	8.2%	2 425.8	4.4%
15 000	20 000	22 060	389.0	16 852	293.9	119 773	4.9%	2 101.7	3.8%
20 000	25 000	14 918	330.5	14 233	319.9	86 944	3.5%	1 937.3	3.5%
25 000	30 000	9 824	267.7	10 536	287.2	59 107	2.4%	1 612.8	2.9%
30 000	35 000	7 660	247.2	7 800	252.3	45 581	1.9%	1 472.3	2.7%
35 000	40 000	5 562	208.5	5 169	192.9	31 482	1.3%	1 180.1	2.1%
40 000	45 000	4 531	192.8	3 734	159.0	26 049	1.1%	1 106.8	2.0%
45 000	50 000	4 873	233.6	4 660	223.6	26 947	1.1%	1 289.0	2.3%
50 000	75 000	16 785	990.7	15 467	926.9	87 734	3.6%	5 228.3	9.5%
75 000	100 000	9 368	822.9	7 615	667.7	44 717	1.8%	3 915.8	7.1%
100 000	125 000	4 994	549.3	4 615	510.0	27 209	1.1%	3 013.5	5.5%
125 000	150 000	2 812	384.9	2 800	381.5	14 446	0.6%	1 970.5	3.6%
150 000		9 198	3 823.2	8 275	3 628.1	50 085	2.0%	22 497.7	41.0%
TOTAL		427 118	9 718.8	391 791	9 041.2	2 460 250		54 936.0	

TRADING EVOLUTION



FOCUS

MONTH	INSTRUMENT WITH HIGHEST TURNOVER		INSTRUMENT WITH HIGHEST TRADES NUMBER	
	ALPHA CODE	EUR	ALPHA CODE	NUMBER
JUNE	CSNDX	331 081 757	3OIL	13 456
JULY	3OIL	176 533 155	3OIL	14 044
AUGUST	IUSE	236 112 884	3OIL	12 480
SEPTEMBER	ETFMIB	269 045 407	3OIS	11 850
OCTOBER	CSSPX	316 822 783	XBRMIB	18 966
NOVEMBER	CSSPX	212 701 817	3OIL	27 623
DECEMBER	IUSE	631 870 772	3OIL	25 847
JANUARY 2019	IUSE	409 453 929	3OIL	22 548
FEBRUARY	IUSE	298 479 507	3OIL	21 292
MARCH	3OIL	190 451 024	3OIL	23 128
APRIL	EMUEUA	229 989 636	3OIL	16 137
MAY	CSSPX	249 469 851	3OIL	20 101
JUNE	IWDE	190 059 082	3OIL	20 721



SPREAD

	SPREAD							
	BBO		5 000 €		15 000 €		25 000 €	
	SPREAD	% OBSER	SPREAD	% OBSER	SPREAD	% OBSER	SPREAD	% OBSER
ETF - DEVELOPED MARKET	0.07%	99.76%	0.08%	99.77%	0.08%	99.76%	0.08%	99.76%
EQUITY ITALY	0.11%	99.80%	0.11%	99.80%	0.12%	99.80%	0.12%	99.80%
EQUITY EUROPE - REGIONAL	0.07%	99.86%	0.07%	99.86%	0.07%	99.86%	0.08%	99.86%
EQUITY EUROPE - SINGLE COUNTRY	0.09%	99.81%	0.09%	99.82%	0.10%	99.81%	0.10%	99.76%
EQUITY WORLD	0.08%	99.59%	0.08%	99.61%	0.09%	99.60%	0.09%	99.60%
EQUITY NORTH AMERICA	0.06%	99.74%	0.06%	99.74%	0.07%	99.74%	0.07%	99.73%
EQUITY PACIFIC	0.10%	99.87%	0.10%	99.87%	0.11%	99.86%	0.11%	99.86%
EQUITY SHORT (DEVELOPED)	0.08%	99.88%	0.09%	99.88%	0.09%	99.88%	0.09%	99.88%
BUYWRITE - COVERED CALL	0.00%	0.00%	0.00%	0.00%	0.00%	0.00%	0.00%	0.00%
LEVERAGED LONG	0.09%	99.60%	0.09%	99.64%	0.10%	99.65%	0.10%	99.65%
LEVERAGED SHORT	0.10%	99.61%	0.10%	99.62%	0.10%	99.64%	0.10%	99.63%
PROTECTIVE PUT	0.00%	0.00%	0.00%	0.00%	0.00%	0.00%	0.00%	0.00%
ETF - EMERGING MARKETS	0.17%	99.72%	0.17%	99.73%	0.18%	99.72%	0.18%	99.71%
EQUITY EMERGING - AFRICA/MIDDLE EAST	0.47%	99.89%	0.49%	99.89%	0.50%	99.86%	0.51%	99.84%
EQUITY EMERGING - ASIA	0.23%	99.85%	0.23%	99.84%	0.24%	99.84%	0.24%	99.83%
EQUITY EMERGING - CENTRE/SOUTH AMERICA	0.56%	99.94%	0.58%	99.93%	0.60%	99.93%	0.61%	99.85%
EQUITY EMERGING - EAST EUROPE	0.28%	99.78%	0.29%	99.79%	0.30%	99.79%	0.30%	99.79%
EQUITY EMERGING - WORLD	0.09%	99.63%	0.09%	99.64%	0.09%	99.63%	0.09%	99.63%
EQUITY SHORT (EMERGING)	0.00%	0.00%	0.00%	0.00%	0.00%	0.00%	0.00%	0.00%
ETF - CORPORATE GOVERNMENT BONDS	0.09%	99.83%	0.10%	99.82%	0.10%	99.82%	0.10%	99.81%
INFLATION	0.12%	99.84%	0.12%	99.84%	0.12%	99.82%	0.13%	99.81%
LIQUIDITY	0.03%	99.98%	0.03%	99.97%	0.03%	99.97%	0.03%	99.97%
CORPORATE BOND - EURO	0.08%	99.78%	0.08%	99.78%	0.08%	99.77%	0.08%	99.77%
CORPORATE BOND - EX EURO	0.14%	99.93%	0.14%	99.93%	0.14%	99.92%	0.14%	99.92%
CORPORATE BOND - EMERGING	0.20%	99.92%	0.21%	99.92%	0.22%	99.92%	0.23%	99.90%
CORPORATE BOND - WORLD	0.16%	99.78%	0.17%	99.78%	0.18%	99.77%	0.18%	99.77%
CORPORATE BOND - HIGH YIELD	0.10%	99.79%	0.11%	99.79%	0.11%	99.78%	0.12%	99.77%
AGGREGATE BOND	0.13%	99.87%	0.13%	99.84%	0.14%	99.84%	0.14%	99.84%
BOND SHORT	0.07%	99.91%	0.08%	99.92%	0.08%	99.92%	0.08%	99.92%
BOND LEVERAGED LONG	0.10%	99.94%	0.10%	99.94%	0.10%	99.94%	0.10%	99.94%
BOND LEVERAGED SHORT	0.08%	99.67%	0.08%	99.68%	0.09%	99.68%	0.09%	99.69%
GOVERNMENT BONDS - EMERGING	0.14%	99.72%	0.15%	99.72%	0.16%	99.71%	0.17%	99.66%
GOVERNMENT BONDS - EURO	0.06%	99.90%	0.06%	99.90%	0.06%	99.90%	0.06%	99.90%
GOVERNMENT BONDS - ITALY	0.09%	99.86%	0.09%	99.86%	0.09%	99.86%	0.09%	99.86%
GOVERNMENT BONDS - WORLD	0.12%	99.93%	0.12%	99.92%	0.12%	99.92%	0.12%	99.92%
GOVERNMENT BONDS - EX EURO	0.09%	99.83%	0.10%	99.83%	0.10%	99.82%	0.10%	99.82%
ETF - STYLE	0.18%	99.87%	0.18%	99.87%	0.19%	99.86%	0.19%	99.84%
EQUITY STYLE (DEVELOPED)	0.17%	99.87%	0.18%	99.87%	0.18%	99.86%	0.19%	99.84%
EQUITY STYLE (EMERGING)	0.36%	99.93%	0.36%	99.88%	0.36%	99.83%	0.36%	99.74%
ETF - OTHERS	0.20%	99.84%	0.20%	99.84%	0.22%	99.82%	0.23%	99.74%
EQUITY SECTORS (DEVELOPED)	0.20%	99.94%	0.21%	99.94%	0.22%	99.93%	0.22%	99.91%
EQUITY SECTORS (EMERGING)	0.00%	0.00%	0.00%	0.00%	0.00%	0.00%	0.00%	0.00%
EQUITY THEMATIC	0.22%	99.74%	0.23%	99.74%	0.26%	99.71%	0.28%	99.60%
COMMODITIES	0.17%	99.85%	0.17%	99.85%	0.18%	99.82%	0.18%	99.68%
CREDIT INDICES	0.21%	100.00%	0.21%	100.00%	0.22%	100.00%	0.22%	100.00%
REAL ESTATE	0.14%	99.93%	0.15%	99.93%	0.17%	99.92%	0.18%	99.91%
LEVERAGED CREDIT INDICES	0.00%	0.00%	0.00%	0.00%	0.00%	0.00%	0.00%	0.00%
VOLATILITY INDICES	0.29%	99.90%	0.31%	99.91%	0.33%	99.86%	0.34%	99.72%
CURRENCIES INDICES	0.00%	0.00%	0.00%	0.00%	0.00%	0.00%	0.00%	0.00%
FLEXIBLE	0.35%	99.96%	0.36%	99.95%	0.38%	99.92%	0.38%	99.90%
MULTI ASSET	0.49%	100.00%	0.46%	99.55%	0.46%	99.55%	0.46%	99.55%
ETF	0.10%	99.80%	0.10%	99.80%	0.11%	99.79%	0.11%	99.78%

Data obtained from 1 minute snapshots of the trading book (5 levels) during trading days of the relevant month.

Market Spread: means the difference between bid and ask prices divided by the mid quote at which it was possible to buy and sell simultaneously the relevant amount.

% Obser: means the percentage of observations at which it would be possible to buy and sell simultaneously the relevant amount.

The average showed is the weighted average on AUM deposited in Monte Titoli is used: it's the average calculated taking into account the AUM (asset under management) deposited in Monte Titoli.

News

ETF AUM reached the new historical record of €70.14bn (+19.51% vs June 2018).

New instruments listed in June:

- FRANKLIN FTSE BRAZIL UCITS ETF - IE00BHZRQ100
- FRANKLIN FTSE CHINA UCITS ETF - IE00BHZR147
- FRANKLIN FTSE KOREA UCITS ETF - IE00BHZR030
- ISHARES MSCI EUROPE SRI UCITS ETF EUR A - IE00B52V196
- ISHARES CORE GLB AG BOND UCITS ETF EUR H - IE00BDBRDM35
- ISHARES DIGITAL SECURITY UCITS ETF ACC - IE00BG0J4C88
- ISHARES ELECTRIC VEH TEC UCITS ETF USD A - IE00BGL86212
- ISHARES MSCI EM SRI UCITS ETF USD (ACC) - IE00BYJRP78
- ISHARES MSCI USA SRI UCITS ETF USD ACC - IE00BYJRR92
- ISHARES MSCI WORLD SRI UCITS ETF EUR A - IE00BYX2D69
- ISHARES MSCI JAPAN SRI UCITS ETF ACC - IE00BYXK17
- ISHARES EUR CORP BOND SRI UCITS ETF D - IE00BYZVT156
- ISHARES EUR CORP BON SRI 0-3 UCITS ETF D - IE00BYTVV78
- SPDR 0-5 EM USD GOVT EUR H UCITS ETF A - IE00BL36X53
- INVECO MSCI WORLD ESG SCREEN UCITS ETF - IE00BJQR0K83
- INVECO MSCI EUROPE ESG SCREEN UCITS ETF - IE00BQR0L90
- INVECO MSCI USA ESG SCREEN UCITS ETF - IE00BQR0M08
- BNPP ECPi CIRCULAR ECON LEAD UCITS ETF - LU1953136527

Markets Analysis
Piazza degli Affari, 6 - 20123 Milano
T +39 02 724261 | Fax +39 02 8646.4323
e-mail: markets_analysis@borsaitaliana.it
www.borsaitaliana.it



London
Stock Exchange Group

This document contains text, data, graphics, photographs, illustrations, artwork, names, logos, trade marks, service marks and information ("Information") connected with Borsa Italiana S.p.A. ("Borsa Italiana"). All reasonable efforts have been made to ensure that the Information in this document was correct at the time of publication. However, Borsa Italiana Spa accepts no liability for decisions taken, or systems-related or other work carried out by any party based on this document. The publication of this document does not represent solicitation, by Borsa Italiana, of public saving and is not to be considered as a recommendation by Borsa Italiana as to the suitability of the investment, if any, herein described.

© June 2019 Borsa Italiana S.p.A. All rights reserved.