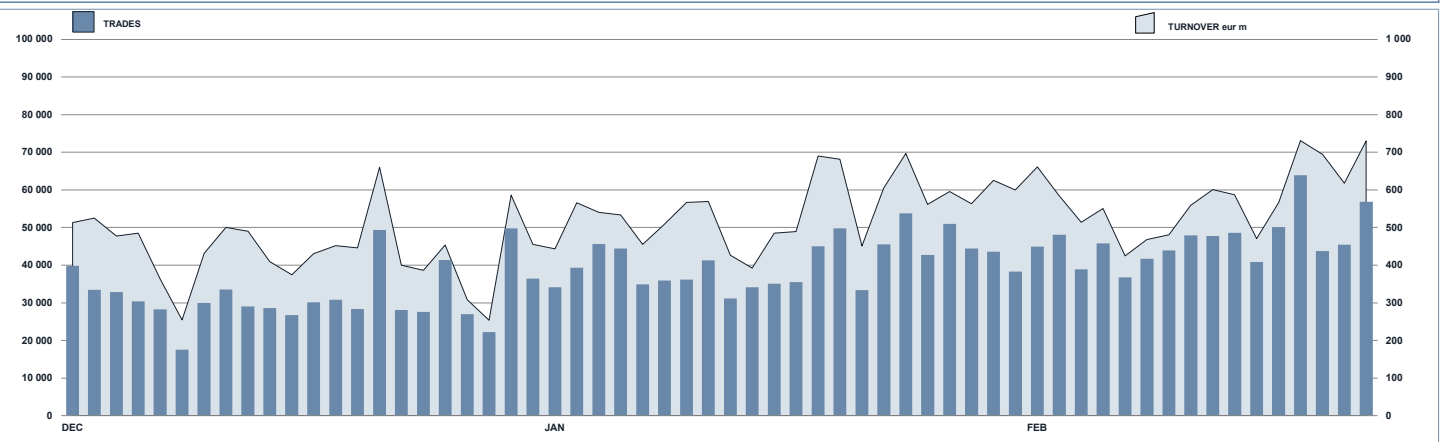




ETFplus Statistics

February 2021

ETFPUS DAILY TURNOVER



MAIN INDICATORS

	LISTED INSTRUMENT				TRADING					
	LISTED END OF MONTH	MONTH NEW LISTED	ALUM in MT		JANUARY 2021		FEBRUARY 2021		JAN - FEB 2021	
			eur m 29/01/2021	eur m 26/02/2021	Trades	Turnover eur m	Trades	Turnover eur m	Trades	Turnover eur m
ETF - DEVELOPED MARKET	356	4	34 962.26	36 417.99	148 104	2 875.27	156 362	2 931.79	304 466	5 807.05
ETF - CORPORATE AND GOV BOND	352	3	42 160.83	40 922.97	119 817	2 237.28	138 508	2 617.01	258 325	4 854.29
ETF - EMERGING MARKETS	110	1	6 037.26	6 103.41	63 444	900.86	57 584	808.68	121 028	1 709.55
ETF - STYLE	101	0	3 236.07	3 338.60	23 493	297.99	22 281	272.94	45 774	570.92
OTHERS	204	1	8 575.01	9 275.82	253 210	2 348.47	300 865	2 427.07	554 075	4 775.55
OTFCFN	219	1	7 899.42	7 707.19	195 861	2 045.47	248 915	2 566.39	442 776	4 611.86
TOTAL	1 342	10	102 870.85	103 765.98	803 929	10 705.34	922 515	11 623.88	1 726 444	22 329.22
<i>of which RPQ</i>						<i>324.65</i>		<i>272.25</i>		<i>597.11</i>

MOST TRADED IN THE MONTH BY TRADES AND RELATIVE SPREAD

Name	Alphab.	ISIN	TRADES number	% TOT	BBO	SPREAD 25 000 €
1 ISHARES GLOBAL CLEAN ENERGY UCITS ETF	INRG	IE00B1XNHC34	37 838	4.1%	0.07%	0.09%
2 INVESCO GLOBAL BLOCKCHAIN UCITS ETF A	BCHN	IE00B8BNP67	25 441	2.8%	0.25%	0.37%
3 L&G HYDROGEN ECONOMY UCITS ETF	HTWO	IE00BMYDM734	18 759	2.0%	0.25%	0.44%
4 WISDOMTREE NATURAL GAS 3X DAILY SHORT	3NGS	IE00B76BRD76	14 160	1.5%	0.50%	0.57%
5 WISDOMTREE WTI CRUDE OIL 2X DAILY LEV	LOIL	IE00BDD9Q840	12 791	1.4%	0.15%	0.17%
6 WISDOMTREE FTSE MIB 3X DAILY LEVERAGED	WCLD	IE00BJJQWQ72	11 398	1.2%	0.15%	0.18%
7 VANECK VIDEO GAMING ESPORTS UCITS ETF	ESPO	IE00BYWQWR46	10 895	1.2%	0.12%	0.13%
8 WISDOMTREE FTSE MIB 3X DAILY SHORT	3ITS	IE00B73CW36	10 829	1.2%	0.12%	0.13%
9 WISDOMTREE PHYSICAL SILVER	PHAG	IE00B1V33333	10 796	1.2%	0.11%	0.19%
10 WISDOMTREE SILVER 3X DAILY LEVERAGED	SSL	IE00B7X02195	10 789	1.2%	0.43%	0.49%

MOST TRADED IN THE MONTH BY TURNOVER AND RELATIVE SPREAD

Name	Alphab.	ISIN	TURNOVER eur m	% TOT	BBO	SPREAD 25 000 €
1 ISHARES GLOBAL CLEAN ENERGY UCITS ETF	INRG	IE00B1XNHC34	399	3.4%	0.07%	0.09%
2 WISDOMTREE WTI CRUDE OIL 2X DAILY LEV	LOIL	IE00BDD9Q840	228	1.9%	0.15%	0.17%
3 WISDOMTREE WTI CRUDE OIL	CRUD	GB00B19CXV33	205	1.8%	0.06%	0.07%
4 LYXOR FTSE MIB UCITS ETF - DIST	ETFMB	FR0010010827	161	1.6%	0.05%	0.06%
5 INVESCO GLOBAL BLOCKCHAIN UCITS ETF A	BCHN	IE00B8BNP67	151	1.3%	0.25%	0.37%
6 WISDOMTREE FTSE MIB 3X DAILY LEVERAGED	3ITL	IE00B8N3063	127	1.1%	0.06%	0.12%
7 ISHARES CORE MSCI EM IMI UCITS ETF ACC	EMIM	IE00B8M4G266	150	1.3%	0.11%	0.12%
8 LYXOR FTSEMIB DA 2X LEV UCITS ETF DIST	LEVMB	FR0010446658	112	1.0%	0.08%	0.09%
9 WISDOMTREE CLOUD COMPUT UCITS ETF USD A	WCLD	IE00BJJQWQ72	110	0.9%	0.15%	0.18%
10 ISHARES CORE MSCI WORLD UCITS ETF ACC	SWDA	IE00B4LY983	105	0.9%	0.04%	0.05%

MOST TRADED IN THE YEAR BY TRADES AND RELATIVE SPREAD

Name	Alphab.	ISIN	TRADES number	% TOT	BBO	SPREAD 25 000 €
1 ISHARES GLOBAL CLEAN ENERGY UCITS ETF	INRG	IE00B1XNHC34	89 499	5.2%	0.08%	0.10%
2 INVESCO GLOBAL BLOCKCHAIN UCITS ETF A	BCHN	IE00B8BNP67	33 689	2.0%	0.28%	0.40%
3 WISDOMTREE NATURAL GAS 3X DAILY SHORT	3NGS	IE00B76BRD76	24 863	1.4%	0.48%	0.54%
4 WISDOMTREE WTI CRUDE OIL 2X DAILY LEV	LOIL	IE00BDD9Q840	24 708	1.4%	0.18%	0.20%
5 WISDOMTREE CLOUD COMPUT UCITS ETF USD A	WCLD	IE00BJJQWQ72	20 852	1.2%	0.16%	0.18%
6 WISDOMTREE FTSE MIB 3X DAILY SHORT	3ITS	IE00B73CW36	19 790	1.1%	0.12%	0.14%
7 VANECK VIDEO GAMING ESPORTS UCITS ETF	ESPO	IE00BYWQWR46	19 151	1.1%	0.15%	0.16%
8 L&G HYDROGEN ECONOMY UCITS ETF	HTWO	IE00BMYDM734	18 759	1.1%	0.25%	0.44%
9 WISDOMTREE FTSE MIB 3X DAILY LEVERAGED	3ITL	IE00B8N3063	18 072	1.0%	0.12%	0.12%
10 WISDOMTREE WTI CRUDE OIL	CRUD	GB00B19CXV33	17 945	1.0%	0.07%	0.08%

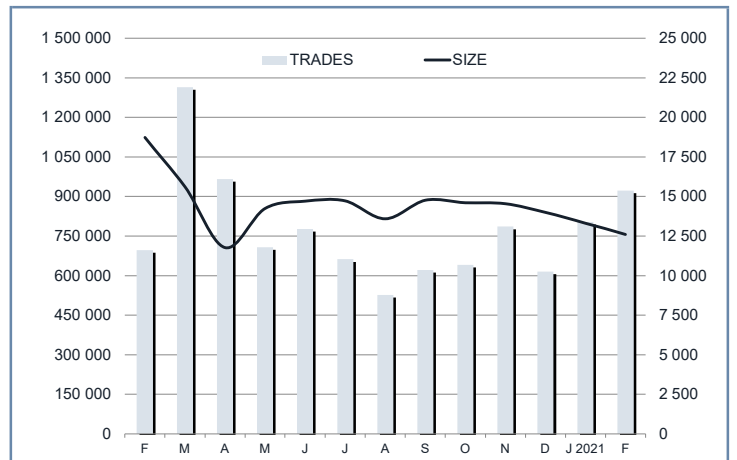
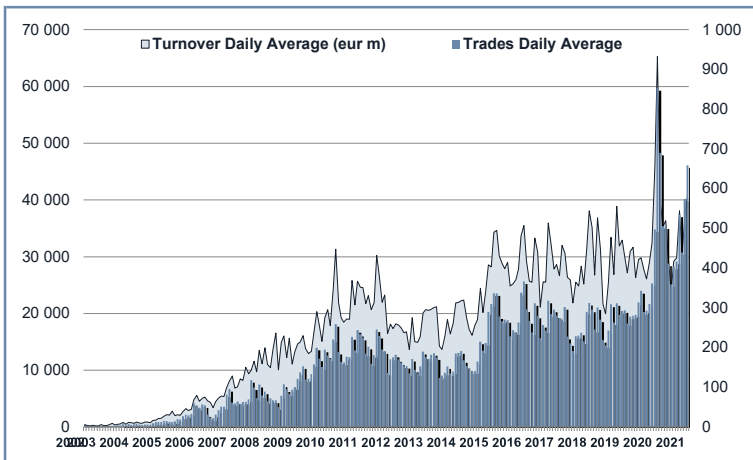
MOST TRADED IN THE YEAR BY TURNOVER AND RELATIVE SPREAD

Name	Alphab.	ISIN	TURNOVER eur m	% TOT	BBO	SPREAD 25 000 €
1 ISHARES GLOBAL CLEAN ENERGY UCITS ETF	INRG	IE00B1XNHC34	987	4.4%	0.08%	0.10%
2 WISDOMTREE WTI CRUDE OIL 2X DAILY LEV	LOIL	IE00BDD9Q840	417	1.9%	0.18%	0.20%
3 WISDOMTREE WTI CRUDE OIL	CRUD	GB00B19CXV33	388	1.7%	0.07%	0.08%
4 WISDOMTREE FTSE MIB 3X DAILY LEVERAGED	3ITL	IE00B8N3063	259	1.2%	0.12%	0.12%
5 ISHARES CORE MSCI EM IMI UCITS ETF ACC	EMIM	IE00B8M4G266	231	1.0%	0.06%	0.06%
6 LYXOR FTSE MIB UCITS ETF - DIST	ETFMB	FR0010010827	231	1.0%	0.06%	0.06%
7 ISHARES CORE MSCI WORLD UCITS ETF ACC	SWDA	IE00B4LY983	217	1.0%	0.09%	0.09%
8 LYXOR FTSEMIB DA 2X LEV UCITS ETF DIST	LEVMB	FR0010446658	206	0.9%	0.16%	0.18%
9 WISDOMTREE CLOUD COMPUT UCITS ETF USD A	WCLD	IE00BJJQWQ72	221	1.0%	0.05%	0.05%
10 INVESCO GLOBAL BLOCKCHAIN UCITS ETF A	BCHN	IE00B8BNP67	202	0.9%	0.28%	0.40%

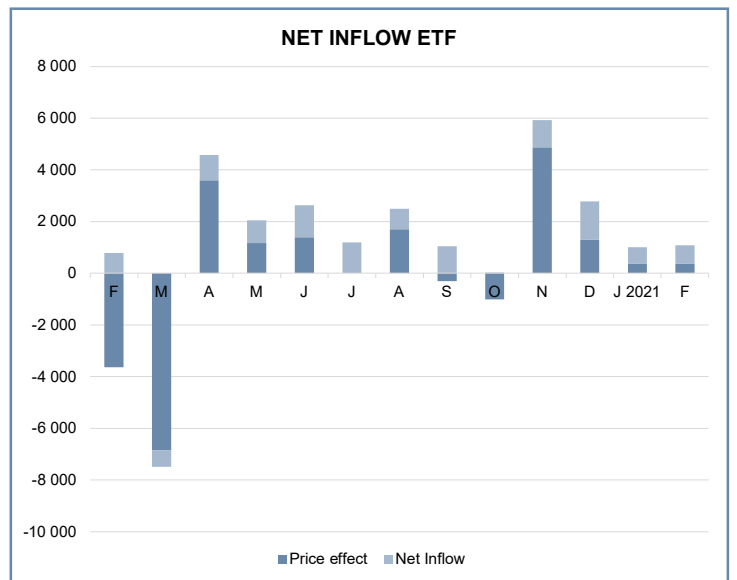
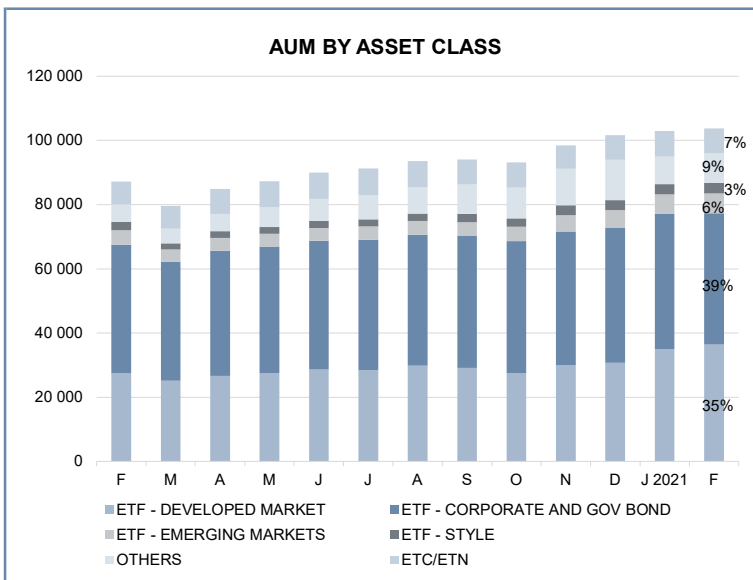
TRADING BY SIZE OF TURNOVER

SIZE OF TURNOVER		JANUARY 2021		FEBRUARY 2021		YEAR 2021			
		Trades	Turnover eur m	Trades	Turnover eur m	Trades	% TOT	Turnover eur m	% TOT
-	500	105 327	24.5	123 884	29.3	229 211	13.3%	53.8	0.2%
500	1 000	74 220	55.2	86 554	65.3	160 774	9.3%	120.5	0.5%
1 000	2 000	121 730	173.2	135 349	193.3	257 079	14.9%	366.5	1.6%
2 000	3 000	78 922	194.9	91 251	225.1	170 173	9.9%	420.0	1.9%
3 000	4 000	49 890	172.4	57 676	199.3	107 566	6.2%	371.7	1.7%
4 000	5 000	47 481	214.6	52 367	237.1	99 848	5.8%	451.6	2.0%
5 000	6 000	38 163	207.5	43 809	238.7	81 972	4.7%	446.2	2.0%
6 000	7 000	26 654	171.6	29 650	191.7	56 304	3.3%	363.3	1.6%
7 000	8 000	22 325	167.2	25 983	194.2	48 308	2.8%	361.4	1.6%
8 000	9 000	16 723	142.0	19 800	167.9	36 523	2.1%	310.0	1.4%
9 000	10 000	17 407	166.5	21 455	205.5	38 862	2.3%	372.1	1.7%
10 000	15 000	60 582	732.1	73 624	891.6	134 206	7.8%	1 623.7	7.3%
15 000	20 000	29 442	511.3	32 779	571.0	62 221	3.6%	1 082.3	4.8%
20 000	25 000	21 539	476.8	24 497	544.0	46 036	2.7%	1 020.8	4.6%
25 000	30 000	14 474	394.5	16 912	457.8	31 386	1.8%	852.3	3.8%
30 000	35 000	9 127	293.9	10 410	335.7	19 537	1.1%	629.6	2.8%
35 000	40 000	8 281	310.8	8 656	325.0	16 937	1.0%	635.7	2.8%
40 000	45 000	7 197	304.7	8 613	364.4	15 810	0.9%	669.1	3.0%
45 000	50 000	5 964	285.0	7 981	381.9	13 945	0.8%	666.8	3.0%
50 000	75 000	23 261	1 370.9	25 636	1 509.0	48 897	2.8%	2 879.9	12.9%
75 000	100 000	9 130	790.6	9 534	827.8	18 664	1.1%	1 618.4	7.2%
100 000	125 000	5 951	651.8	5 812	635.8	11 763	0.7%	1 287.6	5.8%
125 000	150 000	2 607	357.8	2 773	381.5	5 380	0.3%	739.3	3.3%
150 000		7 532	2 535.7	7 510	2 450.9	15 042	0.9%	4 986.7	22.3%
TOTAL		803 929	10 705.3	922 515	11 623.9	1 726 444		22 329.2	

TRADING EVOLUTION



FOCUS



SPREAD

	SPREAD							
	BBO		5 000 €		15 000 €		25 000 €	
	SPREAD	% OBSER	SPREAD	% OBSER	SPREAD	% OBSER	SPREAD	% OBSER
ETF - DEVELOPED MARKET	0.10%	99.67%	0.10%	99.67%	0.10%	99.67%	0.11%	99.67%
EQUITY ITALY	0.08%	99.40%	0.09%	99.40%	0.09%	99.39%	0.09%	99.38%
EQUITY EUROPE - REGIONAL	0.10%	99.78%	0.10%	99.78%	0.10%	99.78%	0.10%	99.78%
EQUITY EUROPE - SINGLE COUNTRY	0.11%	99.67%	0.11%	99.68%	0.11%	99.68%	0.12%	99.67%
EQUITY WORLD	0.11%	99.57%	0.11%	99.57%	0.11%	99.57%	0.12%	99.56%
EQUITY NORTH AMERICA	0.09%	99.68%	0.09%	99.68%	0.09%	99.67%	0.10%	99.67%
EQUITY PACIFIC	0.13%	99.74%	0.13%	99.74%	0.14%	99.74%	0.15%	99.73%
EQUITY SHORT (DEVELOPED)	0.07%	99.70%	0.08%	99.70%	0.08%	99.70%	0.08%	99.70%
BUYWRITE - COVERED CALL	0.00%	0.00%	0.00%	0.00%	0.00%	0.00%	0.00%	0.00%
LEVERAGED LONG	0.10%	99.41%	0.10%	99.41%	0.10%	99.40%	0.10%	99.42%
LEVERAGED SHORT	0.11%	99.50%	0.12%	99.50%	0.12%	99.50%	0.12%	99.50%
PROTECTIVE PUT	0.00%	0.00%	0.00%	0.00%	0.00%	0.00%	0.00%	0.00%
ETF - EMERGING MARKETS	0.17%	99.47%	0.18%	99.47%	0.19%	99.45%	0.19%	99.38%
EQUITY EMERGING - AFRICA/MIDDLE EAST	0.58%	99.84%	0.60%	99.58%	0.64%	99.04%	0.66%	98.73%
EQUITY EMERGING - ASIA	0.20%	99.46%	0.21%	99.46%	0.22%	99.41%	0.23%	99.28%
EQUITY EMERGING - CENTRE/SOUTH AMERICA	0.45%	99.87%	0.47%	99.86%	0.49%	99.78%	0.50%	99.43%
EQUITY EMERGING - EAST EUROPE	0.32%	99.78%	0.33%	99.78%	0.34%	99.78%	0.35%	99.78%
EQUITY EMERGING - WORLD	0.13%	99.44%	0.13%	99.44%	0.14%	99.44%	0.14%	99.43%
EQUITY SHORT (EMERGING)	0.00%	0.00%	0.00%	0.00%	0.00%	0.00%	0.00%	0.00%
ETF - CORPORATE GOVERNMENT BONDS	0.10%	99.76%	0.10%	99.76%	0.11%	99.74%	0.11%	99.73%
INFLATION	0.11%	99.74%	0.12%	99.74%	0.13%	99.72%	0.13%	99.69%
LIQUIDITY	0.03%	99.68%	0.03%	99.68%	0.03%	99.68%	0.03%	99.68%
CORPORATE BOND - EURO	0.07%	99.85%	0.07%	99.87%	0.07%	99.87%	0.08%	99.86%
CORPORATE BOND - EX EURO	0.19%	99.96%	0.20%	99.95%	0.21%	99.95%	0.21%	99.95%
CORPORATE BOND - EMERGING	0.19%	99.95%	0.19%	99.95%	0.20%	99.95%	0.21%	99.87%
CORPORATE BOND - WORLD	0.15%	99.67%	0.15%	99.69%	0.17%	99.61%	0.17%	99.37%
CORPORATE BOND - HIGH YIELD	0.10%	99.59%	0.11%	99.54%	0.11%	99.48%	0.12%	99.48%
AGGREGATE BOND	0.14%	99.67%	0.15%	99.67%	0.16%	99.67%	0.17%	99.67%
BOND SHORT	0.09%	99.98%	0.09%	99.98%	0.09%	99.98%	0.09%	99.98%
BOND LEVERAGED LONG	0.09%	99.99%	0.09%	99.99%	0.09%	99.99%	0.09%	99.99%
BOND LEVERAGED SHORT	0.08%	99.73%	0.08%	99.75%	0.08%	99.75%	0.08%	99.75%
GOVERNMENT BONDS - EMERGING	0.14%	99.61%	0.15%	99.61%	0.16%	99.55%	0.17%	99.49%
GOVERNMENT BONDS - EURO	0.06%	99.88%	0.06%	99.88%	0.06%	99.88%	0.07%	99.88%
GOVERNMENT BONDS - ITALY	0.07%	99.81%	0.07%	99.81%	0.08%	99.81%	0.08%	99.81%
GOVERNMENT BONDS - WORLD	0.11%	99.84%	0.12%	99.85%	0.13%	99.83%	0.13%	99.80%
GOVERNMENT BONDS - EX EURO	0.08%	99.69%	0.08%	99.69%	0.09%	99.67%	0.09%	99.67%
ETF - STYLE	0.18%	99.79%	0.19%	99.79%	0.19%	99.78%	0.20%	99.76%
EQUITY STYLE (DEVELOPED)	0.18%	99.79%	0.18%	99.79%	0.19%	99.78%	0.19%	99.76%
EQUITY STYLE (EMERGING)	0.38%	99.92%	0.39%	99.69%	0.53%	99.38%	0.62%	99.21%
ETF - OTHERS	0.20%	99.44%	0.22%	99.43%	0.23%	99.08%	0.24%	98.52%
EQUITY SECTORS (DEVELOPED)	0.17%	99.78%	0.17%	99.78%	0.18%	99.77%	0.19%	99.75%
EQUITY SECTORS (EMERGING)	0.25%	99.22%	0.27%	99.19%	0.30%	98.39%	0.31%	97.62%
EQUITY THEMATIC	0.20%	99.27%	0.23%	99.24%	0.24%	98.71%	0.25%	97.87%
COMMODITIES	0.23%	99.66%	0.24%	99.66%	0.24%	99.66%	0.25%	99.65%
CREDIT INDICES	0.24%	100.00%	0.24%	100.00%	0.26%	100.00%	0.27%	100.00%
REAL ESTATE	0.20%	99.83%	0.21%	99.83%	0.22%	99.82%	0.23%	99.79%
LEVERAGED CREDIT INDICES	0.00%	0.00%	0.00%	0.00%	0.00%	0.00%	0.00%	0.00%
VOLATILITY INDICES	0.30%	99.12%	0.32%	99.12%	0.33%	98.75%	0.34%	98.69%
CURRENCIES INDICES	0.00%	0.00%	0.00%	0.00%	0.00%	0.00%	0.00%	0.00%
FLEXIBLE	0.33%	99.98%	0.35%	99.98%	0.42%	99.79%	0.46%	96.28%
MULTI ASSET	0.20%	99.85%	0.22%	99.85%	0.24%	99.75%	0.26%	99.17%
ETF	0.12%	99.68%	0.12%	99.68%	0.13%	99.63%	0.13%	99.57%

Data obtained from 1 minute snapshots of the trading book (5 levels) during trading days of the relevant month.

Market Spread: means the difference between bid and ask prices divided by the mid quote at which it was possible to buy and sell simultaneously the relevant amount.

% Obser: means the percentage of observations at which it would be possible to buy and sell simultaneously the relevant amount.

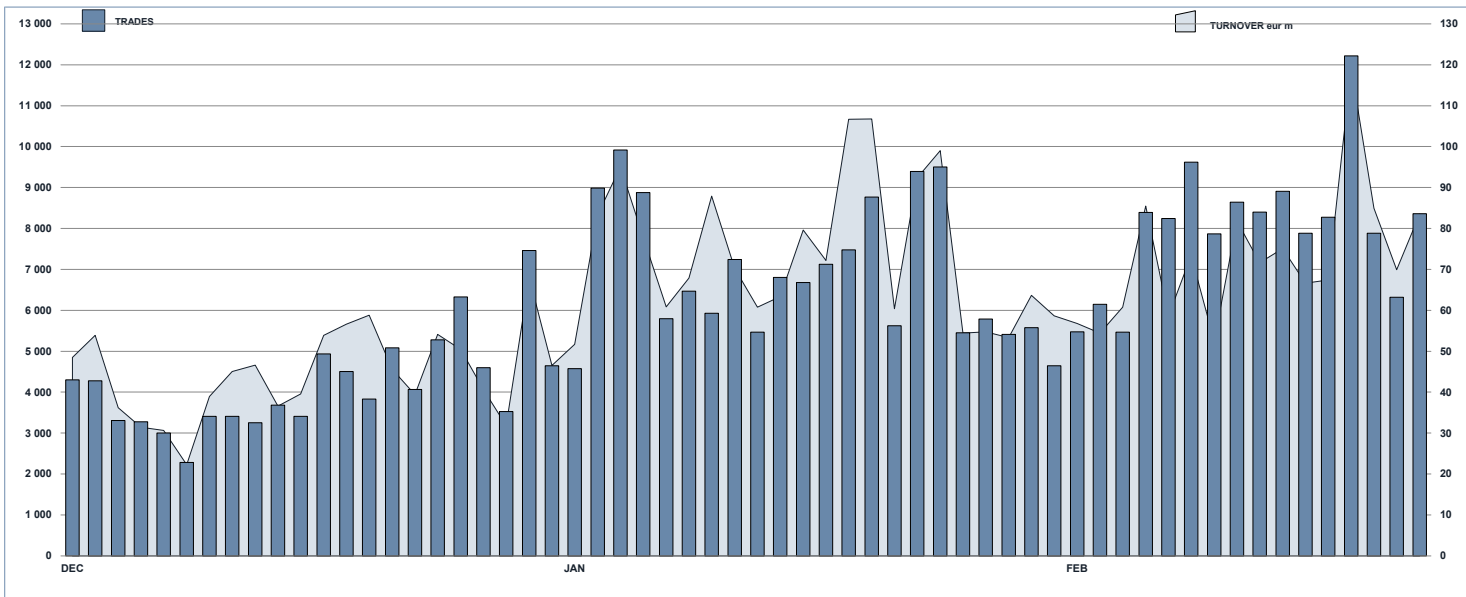
The average showed is the weighted average on AUM deposited in Monte Titoli is used: it's the average calculated taking into account the AUM (asset under management) deposited in Monte Titoli.

News

ETFplus AUM reached €103.76bn (+19.09% vs February 2020).

ETF AUM reached €96.05bn (+20.00% vs February 2020).

ESG INSTRUMENTS DAILY TURNOVER



MOST TRADED ESG INSTRUMENTS IN THE MONTH BY TRADES AND RELATIVE SPREAD

Name	Trading Code	ISIN	TRADES		SPREAD	
			number	% TOT	BBO	25 000 €
1 ISHARES GLOBAL CLEAN ENERGY UCITS ETF	INRG	IE00B1XNH3C4	37 838	25.3%	0.07%	0.09%
2 L&G HYDROGEN ECONOMY UCITS ETF	HTWO	IE00BMYDM794	18 759	12.5%	0.25%	0.44%
3 L&G BATTERY VALUE-CHAIN UCITS ETF	BATT	IE00BF0M2296	7 667	5.1%	0.22%	0.28%
4 ISHARES HEALTHCARE INNOV UCITS ETF ACC	HEAL	IE00BYZK4776	7 335	4.9%	0.13%	0.17%
5 ISHARES AUTOMAT & ROBOTICS UCITS ETF ACC	RBOT	IE00BYZK4552	6 104	4.1%	0.11%	0.14%

MOST TRADED ESG INSTRUMENTS IN THE MONTH BY TURNOVER AND RELATIVE SPREAD

Name	Trading Code	ISIN	TURNOVER		SPREAD	
			eur m	% TOT	BBO	25 000 €
1 ISHARES GLOBAL CLEAN ENERGY UCITS ETF	INRG	IE00B1XNH3C4	399	28.7%	0.07%	0.09%
2 L&G HYDROGEN ECONOMY UCITS ETF	HTWO	IE00BMYDM794	91	6.5%	0.25%	0.44%
3 L&G BATTERY VALUE-CHAIN UCITS ETF	BATT	IE00BF0M2296	60	4.3%	0.22%	0.28%
4 ISHARES HEALTHCARE INNOV UCITS ETF ACC	HEAL	IE00BYZK4776	58	4.2%	0.13%	0.17%
5 ISHARES AUTOMAT & ROBOTICS UCITS ETF ACC	RBOT	IE00BYZK4552	44	3.1%	0.11%	0.14%

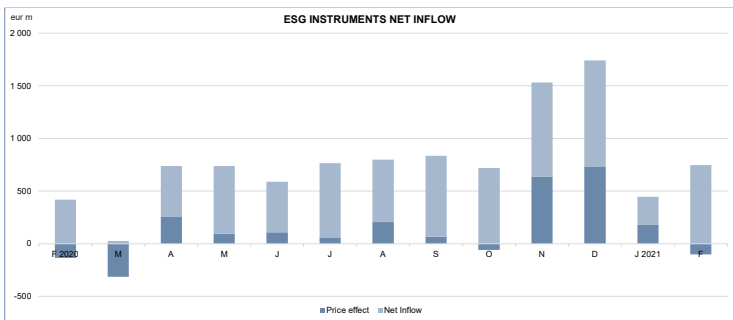
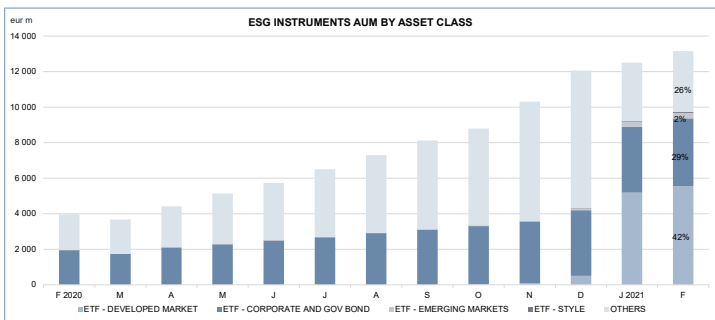
MOST TRADED ESG INSTRUMENTS IN THE YEAR BY TRADES AND RELATIVE SPREAD

Name	Trading Code	ISIN	TRADES		SPREAD	
			number	% TOT	BBO	25 000 €
1 ISHARES GLOBAL CLEAN ENERGY UCITS ETF	INRG	IE00B1XNH3C4	89 499	30.7%	0.07%	0.09%
2 L&G HYDROGEN ECONOMY UCITS ETF	HTWO	IE00BMYDM794	18 759	6.4%	0.25%	0.44%
3 L&G BATTERY VALUE-CHAIN UCITS ETF	BATT	IE00BF0M2296	16 568	5.7%	0.22%	0.28%
4 ISHARES HEALTHCARE INNOV UCITS ETF ACC	HEAL	IE00BYZK4776	14 719	5.0%	0.13%	0.17%
5 LYXOR NEW ENERGY (DR) UCITS ETF	ENER	FR0010524777	11 887	4.1%	0.20%	0.25%

MOST TRADED ESG INSTRUMENTS IN THE YEAR BY TURNOVER AND RELATIVE SPREAD

Name	Trading Code	ISIN	eur m	% TOT	SPREAD	
					BBO	25 000 €
1 ISHARES GLOBAL CLEAN ENERGY UCITS ETF	INRG	IE00B1XNH3C4	987	34.1%	0.07%	0.09%
2 L&G BATTERY VALUE-CHAIN UCITS ETF	BATT	IE00BF0M2296	132	4.6%	0.22%	0.28%
3 ISHARES HEALTHCARE INNOV UCITS ETF ACC	HEAL	IE00BYZK4776	110	3.8%	0.13%	0.17%
4 ISHARES AUTOMAT & ROBOTICS UCITS ETF ACC	RBOT	IE00BYZK4552	98	3.4%	0.11%	0.14%
5 L&G HYDROGEN ECONOMY UCITS ETF	HTWO	IE00BMYDM794	91	3.1%	0.25%	0.44%

FOCUS



At the moment the instruments on ETFplus that can be classified as "Sustainable" are all ETFs.

Markets Analysis
 Piazza degli Affari, 6 - 20123 Milano
 T +39 02 724261 | Fax +39 02 8646.4323
 e-mail: markets_analysis@borsaitaliana.it
www.borsaitaliana.it

This document contains text, data, graphics, photographs, illustrations, artwork, names, logos, trade marks, service marks and information ("Information") connected with Borsa Italiana S.p.A. ("Borsa Italiana"). All reasonable efforts have been made to ensure that the Information in this document was correct at the time of publication. However, Borsa Italiana Spa accepts no liability for decisions taken, or systems-related or other work carried out by any party based on this document. The publication of this document does not represent solicitation, by Borsa Italiana, of public saving and is not to be considered as a recommendation by Borsa Italiana as to the suitability of the investment, if any, herein described.