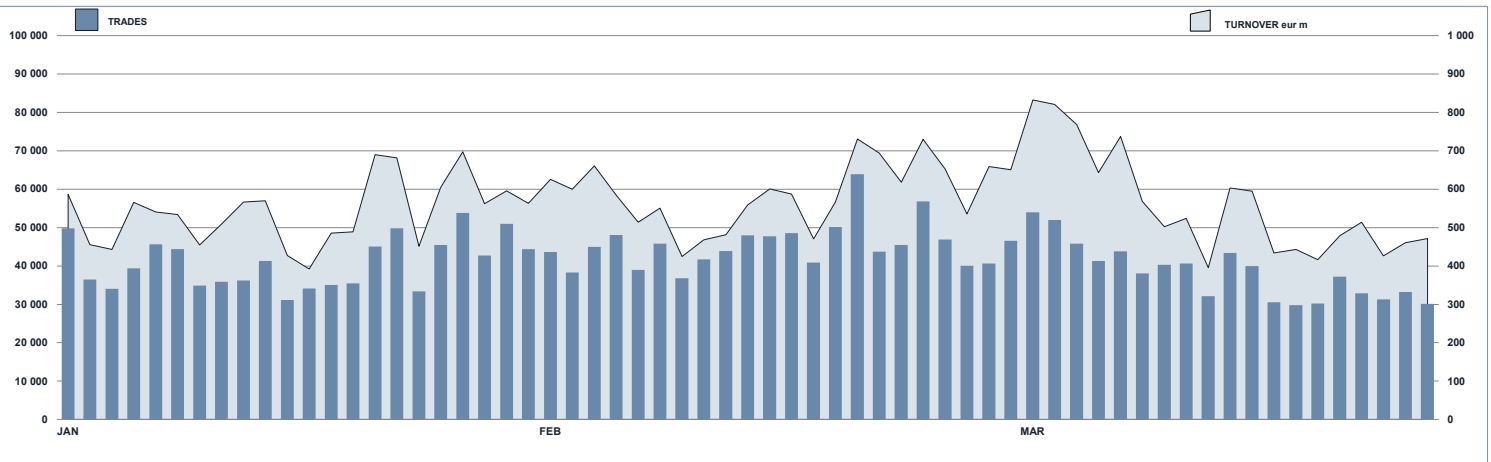




ETFplus Statistics

March 2021

ETFPLUS DAILY TURNOVER



MAIN INDICATORS

LISTED INSTRUMENT

	LISTED END of MONTH	MONTH NEW LISTED	AUM in MT	
			eur m 26/02/2021	eur m 31/03/2021
ETF - DEVELOPED MARKET	359	3	36 417.99	39 091.41
ETF - CORPORATE AND GOV BOND	352	1	40 922.97	40 942.64
ETF - EMERGING MARKETS	110	0	6 103.41	6 221.17
ETF - STYLE	101	0	3 338.60	4 333.95
OTHERS	208	4	9 275.82	9 903.70
ETC/ETN	219	0	7 707.19	7 635.22
TOTAL	1 349	8	103 765.98	108 128.09
<i>of which RFQ</i>				

TRADING

	FEBRUARY 2021		MARCH 2021		JAN - MAR 2021	
	Trades	Turnover eur m	Trades	Turnover eur m	Trades	Turnover eur m
ETF - DEVELOPED MARKET	156 362	2 931.79	169 415	3 468.79	473 881	9 275.85
ETF - CORPORATE AND GOV BOND	138 508	2 617.01	159 485	3 273.88	417 810	8 128.17
ETF - EMERGING MARKETS	57 584	806.68	53 593	852.59	174 621	2 562.14
ETF - STYLE	22 281	272.94	32 856	546.86	78 630	1 117.78
OTHERS	300 865	2 427.07	249 469	2 395.19	803 544	7 170.73
ETC/ETN	246 915	2 566.39	236 068	2 595.39	678 844	7 207.25
TOTAL	922 515	11 623.88	900 886	13 132.70	2 627 330	35 461.92
		<i>272.25</i>			<i>623.17</i>	<i>1 220.28</i>

MOST TRADED IN THE MONTH BY TRADES AND RELATIVE SPREAD

Name	Trading code	ISIN	TRADES		SPREAD	
			number	% TOT	BBO	25 000 €
1 ISHARES GLOBAL CLEAN ENERGY UCITS ETF	INRG	IE00B1XNH34	30 851	3.4%	0.09%	0.11%
2 INVESCO GLOBAL BLOCKCHAIN UCITS ETF A	BCHN	IE00BGBN6P7	16 991	1.9%	0.26%	0.34%
3 WISDOMTREE WTI CRUDE OIL 2X DAILY LEV	LOIL	JE00BDD9Q840	14 350	1.6%	0.18%	0.21%
4 WISDOMTREE CLOUD COMPUT UCITS ETF USD A	WCLD	IE00BJGWQNT2	10 749	1.2%	0.20%	0.24%
5 L&G HYDROGEN ECONOMY UCITS ETF	HTWO	IE00BMYDM794	10 600	1.2%	0.24%	0.43%
6 WISDOMTREE FTSE MIB 3X DAILY SHORT	3ITL	IE00B873CW36	10 008	1.1%	0.11%	0.12%
7 WISDOMTREE S&P 500 VIX 2.25X DAILY LEV	VIXL	IE00BLRRRH06	9 873	1.1%	0.46%	0.59%
8 WISDOMTREE EURO STOXX BANKS 3X DAILY LEV	3BAL	IE00BL809410	9 781	1.1%	0.36%	0.41%
9 WISDOMTREE WTI CRUDE OIL	CRUD	GB00B15KVX33	9 553	1.1%	0.08%	0.09%
10 WISDOMTREE FTSE MIB 3X DAILY LEVERAGED	3ITL	IE00B8NB3063	8 636	1.0%	0.10%	0.10%

MOST TRADED IN THE MONTH BY TURNOVER AND RELATIVE SPREAD

Name	Trading code	ISIN	TURNOVER		SPREAD	
			eur m	% TOT	BBO	25 000 €
1 ISHARES GLOBAL CLEAN ENERGY UCITS ETF	INRG	IE00B1XNH34	391	3.0%	0.09%	0.11%
2 WISDOMTREE WTI CRUDE OIL 2X DAILY LEV	LOIL	JE00BDD9Q840	188	1.4%	0.18%	0.21%
3 ISHARES CORE MSCI EM IMI UCITS ETF ACC	EIMI	IE00BKM46Z66	170	1.3%	0.07%	0.07%
4 INVESCO PHYSICAL GOLD ETC	SGLD	IE00B579F325	164	1.3%	0.05%	0.06%
5 WISDOMTREE WTI CRUDE OIL	CRUD	GB00B15KVX33	164	1.2%	0.08%	0.09%
6 WISDOMTREE FTSE MIB 3X DAILY LEVERAGED	3ITL	IE00B8NB3063	157	1.2%	0.10%	0.10%
7 LYXOR FTSE MIB UCITS ETF - DIST	ETFMIB	FR0010010827	145	1.1%	0.05%	0.06%
8 WISDOMTREE CLOUD COMPUT UCITS ETF USD A	WCLD	IE00BJGWQNT2	142	1.1%	0.20%	0.24%
9 ISHARES CORE MSCI WORLD UCITS ETF ACC	SWDA	IE00B4LY983	131	1.0%	0.05%	0.05%
10 ISHARES CORE S&P 500 UCITS ETF USD ACC	CSSPX	IE00B5BMR087	127	1.0%	0.03%	0.03%

MOST TRADED IN THE YEAR BY TRADES AND RELATIVE SPREAD

Name	Trading code	ISIN	TRADES		SPREAD	
			number	% TOT	BBO	25 000 €
1 ISHARES GLOBAL CLEAN ENERGY UCITS ETF	INRG	IE00B1XNH34	120 350	4.6%	0.08%	0.10%
2 INVESCO GLOBAL BLOCKCHAIN UCITS ETF A	BCHN	IE00BGBN6P7	50 680	1.9%	0.27%	0.38%
3 WISDOMTREE WTI CRUDE OIL 2X DAILY LEV	LOIL	JE00BDD9Q840	39 058	1.5%	0.18%	0.20%
4 WISDOMTREE NATURAL GAS 3X DAILY SHORT	3NGS	IE00B7BRD726	32 716	1.2%	0.46%	0.54%
5 WISDOMTREE CLOUD COMPUT UCITS ETF USD A	WCLD	IE00BJGWQNT2	31 601	1.2%	0.17%	0.20%
6 WISDOMTREE FTSE MIB 3X DAILY SHORT	3ITL	IE00B873CW36	29 798	1.1%	0.12%	0.13%
7 L&G HYDROGEN ECONOMY UCITS ETF	HTWO	IE00BMYDM794	29 359	1.1%	0.24%	0.43%
8 WISDOMTREE WTI CRUDE OIL	CRUD	GB00B15KVX33	27 498	1.0%	0.07%	0.08%
9 WISDOMTREE FTSE MIB 3X DAILY LEVERAGED	3ITL	IE00B8NB3063	26 708	1.0%	0.11%	0.12%
10 VANECK VIDEO GAMING ESPORTS UCITS ETF	ESPO	IE00BYQWR46	25 965	1.0%	0.15%	0.18%

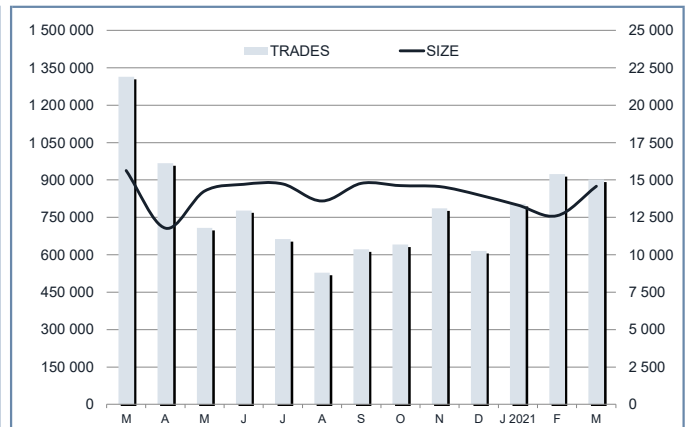
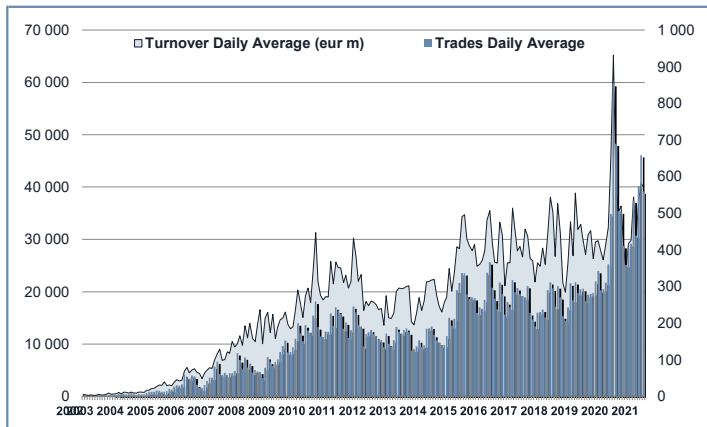
MOST TRADED IN THE YEAR BY TURNOVER AND RELATIVE SPREAD

Name	Trading code	ISIN	TURNOVER		SPREAD	
			eur m	% TOT	BBO	25 000 €
1 ISHARES GLOBAL CLEAN ENERGY UCITS ETF	INRG	IE00B1XNH34	1 378	3.9%	0.08%	0.10%
2 WISDOMTREE WTI CRUDE OIL 2X DAILY LEV	LOIL	JE00BDD9Q840	605	1.7%	0.18%	0.20%
3 WISDOMTREE WTI CRUDE OIL	CRUD	GB00B15KVX33	550	1.5%	0.07%	0.08%
4 WISDOMTREE FTSE MIB 3X DAILY LEVERAGED	3ITL	IE00B8NB3063	416	1.2%	0.11%	0.12%
5 ISHARES CORE MSCI EM IMI UCITS ETF ACC	EIMI	IE00BKM46Z66	401	1.1%	0.06%	0.06%
6 LYXOR FTSE MIB UCITS ETF - DIST	ETFMIB	FR0010010827	376	1.1%	0.05%	0.06%
7 ISHARES CORE MSCI WORLD UCITS ETF ACC	SWDA	IE00B4LY983	353	1.0%	0.05%	0.05%
8 WISDOMTREE CLOUD COMPUT UCITS ETF USD A	WCLD	IE00BJGWQNT2	348	1.0%	0.17%	0.20%
9 INVESCO GLOBAL BLOCKCHAIN UCITS ETF A	BCHN	IE00BGBN6P7	319	0.9%	0.27%	0.38%
10 LYXOR FTSEMIB DAI 2X LEV UCITS ETF DIST	LEVMB	FR0010446658	316	0.9%	0.08%	0.09%

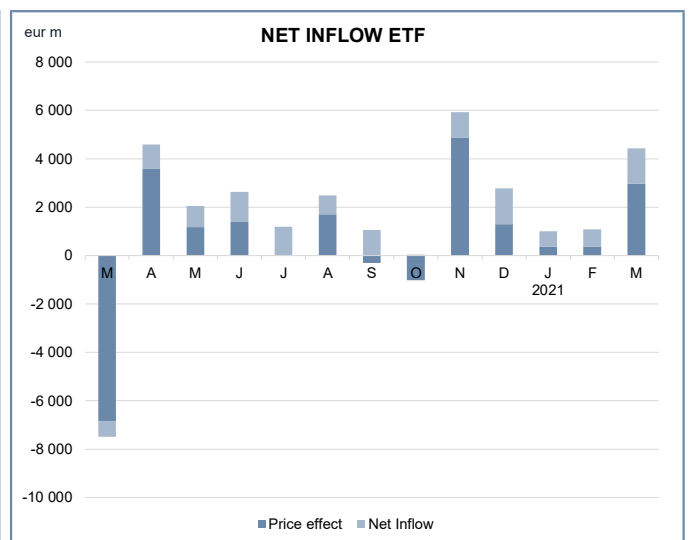
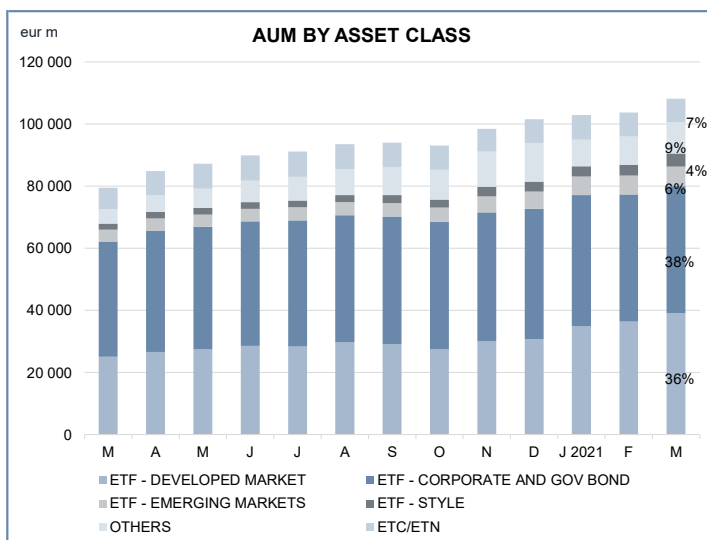
TRADING BY SIZE OF TURNOVER

SIZE OF TURNOVER		FEBRUARY 2021		MARCH 2021		YEAR 2021			
		Trades	Turnover eur m	Trades	Turnover eur m	Trades	% TOT	Turnover eur m	% TOT
-	500	123 884	29.3	119 653	26.9	348 864	13.3%	80.7	0.2%
500	1 000	86 554	65.3	79 313	59.2	240 087	9.1%	179.7	0.5%
1 000	2 000	135 349	193.3	124 477	177.9	381 556	14.5%	544.4	1.5%
2 000	3 000	91 251	225.1	86 115	210.8	256 288	9.8%	630.8	1.8%
3 000	4 000	57 676	199.3	55 141	191.0	162 707	6.2%	562.8	1.6%
4 000	5 000	52 367	237.1	49 761	225.2	149 609	5.7%	676.8	1.9%
5 000	6 000	43 809	238.7	41 137	223.8	123 109	4.7%	670.0	1.9%
6 000	7 000	29 650	191.7	27 957	180.6	84 261	3.2%	543.9	1.5%
7 000	8 000	25 983	194.2	24 826	186.0	73 134	2.8%	547.4	1.5%
8 000	9 000	19 800	167.9	18 465	156.5	54 988	2.1%	466.5	1.3%
9 000	10 000	21 455	205.5	22 692	218.3	61 554	2.3%	590.3	1.7%
10 000	15 000	73 624	891.6	72 191	868.1	206 397	7.9%	2 491.8	7.0%
15 000	20 000	32 779	571.0	36 469	637.5	98 690	3.8%	1 719.9	4.8%
20 000	25 000	24 497	544.0	28 468	628.4	74 504	2.8%	1 649.2	4.7%
25 000	30 000	16 912	457.8	17 237	465.7	48 623	1.9%	1 318.0	3.7%
30 000	35 000	10 410	335.7	10 819	349.6	30 356	1.2%	979.2	2.8%
35 000	40 000	8 656	325.0	9 335	351.3	26 272	1.0%	987.0	2.8%
40 000	45 000	8 613	364.4	9 680	409.9	25 490	1.0%	1 079.0	3.0%
45 000	50 000	7 981	381.9	8 791	421.6	22 736	0.9%	1 088.4	3.1%
50 000	75 000	25 636	1 509.0	28 192	1 667.6	77 089	2.9%	4 547.5	12.8%
75 000	100 000	9 534	827.8	10 559	917.8	29 223	1.1%	2 536.2	7.2%
100 000	125 000	5 812	635.8	6 958	760.9	18 721	0.7%	2 048.5	5.8%
125 000	150 000	2 773	381.5	3 350	461.6	8 730	0.3%	1 200.9	3.4%
150 000		7 510	2 450.9	9 300	3 336.4	24 342	0.9%	8 323.1	23.5%
TOTAL		922 515	11 623.9	900 886	13 132.7	2 627 330		35 461.9	

TRADING EVOLUTION



FOCUS



SPREAD

	SPREAD							
	BBO		5 000 €		15 000 €		25 000 €	
	SPREAD	% OBSER	SPREAD	% OBSER	SPREAD	% OBSER	SPREAD	% OBSER
ETF - DEVELOPED MARKET	0.10%	99.94%	0.10%	99.94%	0.10%	99.93%	0.11%	99.93%
EQUITY ITALY	0.09%	99.96%	0.09%	99.96%	0.10%	99.96%	0.10%	99.95%
EQUITY EUROPE - REGIONAL	0.09%	99.95%	0.09%	99.95%	0.10%	99.95%	0.10%	99.95%
EQUITY EUROPE - SINGLE COUNTRY	0.11%	99.93%	0.11%	99.93%	0.11%	99.93%	0.12%	99.92%
EQUITY WORLD	0.11%	99.93%	0.12%	99.93%	0.12%	99.92%	0.12%	99.91%
EQUITY NORTH AMERICA	0.09%	99.93%	0.09%	99.93%	0.09%	99.93%	0.10%	99.92%
EQUITY PACIFIC	0.13%	99.96%	0.14%	99.96%	0.15%	99.96%	0.16%	99.95%
EQUITY SHORT (DEVELOPED)	0.07%	99.95%	0.07%	99.95%	0.07%	99.95%	0.07%	99.95%
BUYWRITE - COVERED CALL	0.00%	0.00%	0.00%	0.00%	0.00%	0.00%	0.00%	0.00%
LEVERAGED LONG	0.09%	99.87%	0.09%	99.87%	0.09%	99.87%	0.10%	99.87%
LEVERAGED SHORT	0.10%	99.91%	0.11%	99.91%	0.12%	99.91%	0.12%	99.90%
PROTECTIVE PUT	0.00%	0.00%	0.00%	0.00%	0.00%	0.00%	0.00%	0.00%
ETF - EMERGING MARKETS	0.18%	99.93%	0.19%	99.92%	0.20%	99.89%	0.20%	99.81%
EQUITY EMERGING - AFRICA/MIDDLE EAST	0.54%	99.98%	0.58%	99.87%	0.61%	99.43%	0.63%	99.27%
EQUITY EMERGING - ASIA	0.22%	99.93%	0.23%	99.93%	0.24%	99.89%	0.25%	99.78%
EQUITY EMERGING - CENTRE/SOUTH AMERICA	0.46%	99.94%	0.48%	99.86%	0.50%	99.66%	0.51%	98.75%
EQUITY EMERGING - EAST EUROPE	0.35%	99.98%	0.36%	99.98%	0.38%	99.88%	0.38%	99.74%
EQUITY EMERGING - WORLD	0.13%	99.92%	0.14%	99.92%	0.14%	99.91%	0.14%	99.90%
EQUITY SHORT (EMERGING)	0.00%	0.00%	0.00%	0.00%	0.00%	0.00%	0.00%	0.00%
ETF - CORPORATE GOVERNMENT BONDS	0.10%	99.97%	0.10%	99.97%	0.11%	99.95%	0.11%	99.94%
INFLATION	0.11%	99.97%	0.12%	99.96%	0.12%	99.96%	0.13%	99.95%
LIQUIDITY	0.03%	99.93%	0.03%	99.93%	0.03%	99.92%	0.03%	99.92%
CORPORATE BOND - EURO	0.06%	99.99%	0.06%	99.99%	0.07%	99.98%	0.07%	99.98%
CORPORATE BOND - EX EURO	0.18%	99.99%	0.18%	99.99%	0.19%	99.92%	0.20%	99.89%
CORPORATE BOND - EMERGING	0.24%	100.00%	0.25%	100.00%	0.26%	99.96%	0.27%	99.86%
CORPORATE BOND - WORLD	0.16%	99.93%	0.17%	99.93%	0.18%	99.93%	0.19%	99.93%
CORPORATE BOND - HIGH YIELD	0.11%	99.94%	0.11%	99.93%	0.12%	99.88%	0.12%	99.84%
AGGREGATE BOND	0.14%	99.96%	0.14%	99.96%	0.16%	99.96%	0.16%	99.95%
BOND SHORT	0.08%	99.96%	0.08%	99.96%	0.08%	99.96%	0.09%	99.96%
BOND LEVERAGED LONG	0.09%	100.00%	0.09%	100.00%	0.09%	100.00%	0.10%	100.00%
BOND LEVERAGED SHORT	0.08%	99.97%	0.08%	99.98%	0.09%	99.98%	0.09%	99.98%
GOVERNMENT BONDS - EMERGING	0.18%	99.94%	0.18%	99.94%	0.19%	99.93%	0.20%	99.91%
GOVERNMENT BONDS - EURO	0.06%	99.99%	0.06%	99.99%	0.06%	99.99%	0.07%	99.98%
GOVERNMENT BONDS - ITALY	0.07%	100.00%	0.07%	100.00%	0.08%	100.00%	0.08%	100.00%
GOVERNMENT BONDS - WORLD	0.11%	99.99%	0.11%	99.99%	0.12%	99.96%	0.12%	99.91%
GOVERNMENT BONDS - EX EURO	0.09%	99.95%	0.09%	99.95%	0.09%	99.95%	0.09%	99.94%
ETF - STYLE	0.17%	99.97%	0.18%	99.97%	0.19%	99.96%	0.19%	99.95%
EQUITY STYLE (DEVELOPED)	0.17%	99.97%	0.18%	99.97%	0.18%	99.96%	0.19%	99.96%
EQUITY STYLE (EMERGING)	0.37%	99.99%	0.37%	99.64%	0.52%	99.33%	0.62%	99.17%
ETF - OTHERS	0.21%	99.92%	0.22%	99.89%	0.23%	99.68%	0.24%	99.34%
EQUITY SECTORS (DEVELOPED)	0.17%	99.97%	0.18%	99.97%	0.18%	99.96%	0.19%	99.94%
EQUITY SECTORS (EMERGING)	0.29%	99.94%	0.32%	99.91%	0.35%	98.72%	0.37%	97.86%
EQUITY THEMATIC	0.22%	99.90%	0.24%	99.85%	0.26%	99.52%	0.27%	98.97%
COMMODITIES	0.19%	99.92%	0.19%	99.92%	0.19%	99.92%	0.20%	99.92%
CREDIT INDICES	0.23%	100.00%	0.23%	100.00%	0.26%	100.00%	0.27%	100.00%
REAL ESTATE	0.20%	99.97%	0.21%	99.97%	0.21%	99.97%	0.22%	99.97%
LEVERAGED CREDIT INDICES	0.00%	0.00%	0.00%	0.00%	0.00%	0.00%	0.00%	0.00%
VOLATILITY INDICES	0.22%	99.89%	0.23%	99.89%	0.24%	99.85%	0.24%	99.85%
CURRENCIES INDICES	0.00%	0.00%	0.00%	0.00%	0.00%	0.00%	0.00%	0.00%
FLEXIBLE	0.36%	100.00%	0.39%	99.99%	0.43%	99.99%	0.46%	99.87%
MULTI ASSET	0.22%	100.00%	0.23%	100.00%	0.25%	99.90%	0.27%	99.73%
ETF	0.12%	99.95%	0.12%	99.95%	0.13%	99.92%	0.13%	99.87%

Data obtained from 1 minute snapshots of the trading book (5 levels) during trading days of the relevant month.

Market Spread: means the difference between bid and ask prices divided by the mid quote at which it was possible to buy and sell simultaneously the relevant amount.

% Obser: means the percentage of observations at which it would be possible to buy and sell simultaneously the relevant amount.

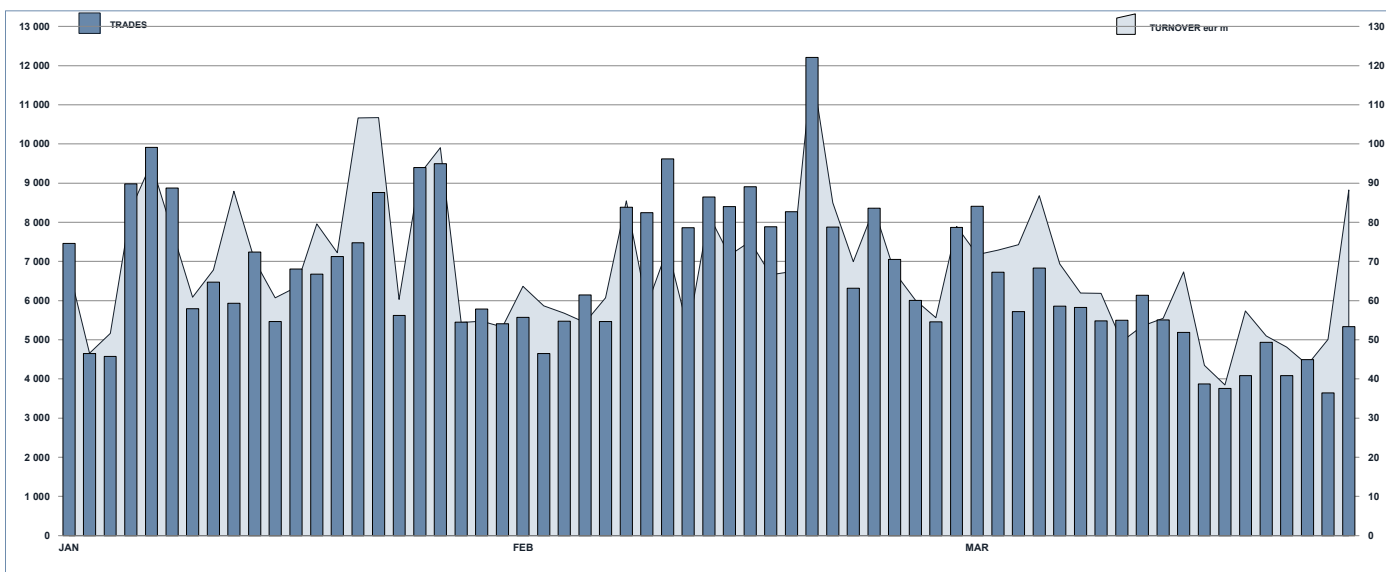
The average showed is the weighted average on AUM deposited in Monte Titoli is used: it's the average calculated taking into account the AUM (asset under management) deposited in Monte Titoli.

News

ETFplus AUM reached €108.128bn (+35.91% vs March 2020).

ETF AUM reached €100.49bn (+38.49% vs March 2020).

ESG INSTRUMENTS DAILY TURNOVER



MOST TRADED ESG INSTRUMENTS IN THE MONTH BY TRADES AND RELATIVE SPREAD

Name	Trading Code	ISIN	TRADES		SPREAD	
			number	% TOT	BBO	25 000 €
1 IISHARES GLOBAL CLEAN ENERGY UCITS ETF	INRG	IE00B1XNHC34	30 851	24.1%	0.09%	0.11%
2 L&G HYDROGEN ECONOMY UCITS ETF	HTWO	IE00BMYDM794	10 600	8.3%	0.24%	0.43%
3 IISHARES HEALTHCARE INNOV UCITS ETF ACC	HEAL	IE00BYZK4776	4 971	3.9%	0.15%	0.18%
4 L&G BATTERY VALUE-CHAIN UCITS ETF	BATT	IE00BF0M2296	4 834	3.8%	0.30%	0.36%
5 IISHARES AUTOMAT & ROBOTICS UCITS ETF ACC	RBOT	IE00BYZK4552	4 622	3.6%	0.13%	0.14%

MOST TRADED ESG INSTRUMENTS IN THE MONTH BY TURNOVER AND RELATIVE SPREAD

Name	Trading Code	ISIN	TURNOVER		SPREAD	
			eur m	% TOT	BBO	25 000 €
1 IISHARES GLOBAL CLEAN ENERGY UCITS ETF	INRG	IE00B1XNHC34	391	27.8%	0.09%	0.11%
2 IISHARES HEALTHCARE INNOV UCITS ETF ACC	HEAL	IE00BYZK4776	49	3.5%	0.15%	0.18%
3 L&G HYDROGEN ECONOMY UCITS ETF	HTWO	IE00BMYDM794	42	3.0%	0.24%	0.43%
4 IISHARES AUTOMAT & ROBOTICS UCITS ETF ACC	RBOT	IE00BYZK4552	39	2.8%	0.13%	0.14%
5 IISHARES MSCI WORLD SRI UCITS ETF EUR A	SUSW	IE00BYX2JD69	34	2.4%	0.10%	0.11%

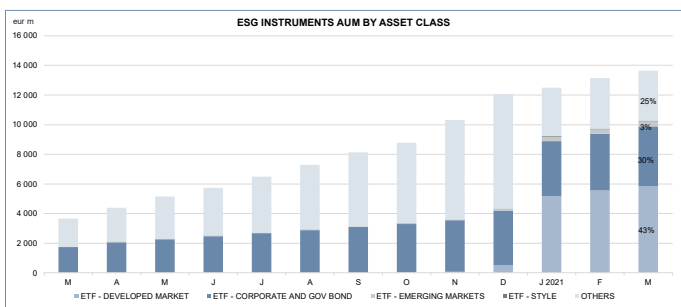
MOST TRADED ESG INSTRUMENTS IN THE YEAR BY TRADES AND RELATIVE SPREAD

Name	Trading Code	ISIN	TRADES		SPREAD	
			number	% TOT	BBO	25 000 €
1 IISHARES GLOBAL CLEAN ENERGY UCITS ETF	INRG	IE00B1XNHC34	120 350	28.7%	0.08%	0.10%
2 L&G HYDROGEN ECONOMY UCITS ETF	HTWO	IE00BMYDM794	29 359	7.0%	0.24%	0.43%
3 L&G BATTERY VALUE-CHAIN UCITS ETF	BATT	IE00BF0M2296	21 402	5.1%	0.25%	0.32%
4 IISHARES HEALTHCARE INNOV UCITS ETF ACC	HEAL	IE00BYZK4776	19 690	4.7%	0.14%	0.18%
5 IISHARES AUTOMAT & ROBOTICS UCITS ETF ACC	RBOT	IE00BYZK4552	16 132	3.8%	0.12%	0.14%

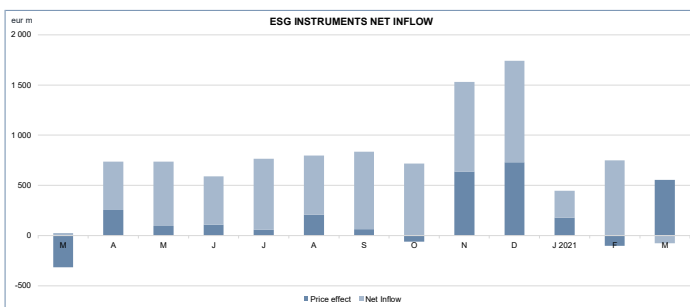
MOST TRADED ESG INSTRUMENTS IN THE YEAR BY TURNOVER AND RELATIVE SPREAD

Name	Trading Code	ISIN	TURNOVER		SPREAD	
			eur m	% TOT	BBO	25 000 €
1 IISHARES GLOBAL CLEAN ENERGY UCITS ETF	INRG	IE00B1XNHC34	1 378	32.0%	0.08%	0.10%
2 L&G BATTERY VALUE-CHAIN UCITS ETF	BATT	IE00BF0M2296	165	3.8%	0.25%	0.32%
3 IISHARES HEALTHCARE INNOV UCITS ETF ACC	HEAL	IE00BYZK4776	160	3.7%	0.14%	0.18%
4 IISHARES AUTOMAT & ROBOTICS UCITS ETF ACC	RBOT	IE00BYZK4552	137	3.2%	0.12%	0.14%
5 L&G HYDROGEN ECONOMY UCITS ETF	HTWO	IE00BMYDM794	132	3.1%	0.24%	0.43%

FOCUS



At the moment the instruments on ETFFplus that can be classified as "Sustainable" are all ETFs.



Markets Analysis
 Piazza degli Affari, 6 - 20123 Milano
 T +39 02 724261 | Fax +39 02 8646.4323
 e-mail: markets_analysis@borsaitaliana.it
 www.borsaitaliana.it

This document contains text, data, graphics, photographs, illustrations, artwork, names, logos, trade marks, service marks and information ("Information") connected with Borsa Italiana S.p.A. ("Borsa Italiana"). All reasonable efforts have been made to ensure that the Information in this document was correct at the time of publication. However, Borsa Italiana Spa accepts no liability for decisions taken, or systems-related or other work carried out by any party based on this document. The publication of this document does not represent solicitation, by Borsa Italiana, of public saving and is not to be considered as a recommendation by Borsa Italiana as to the suitability of the investment, if any, herein described.