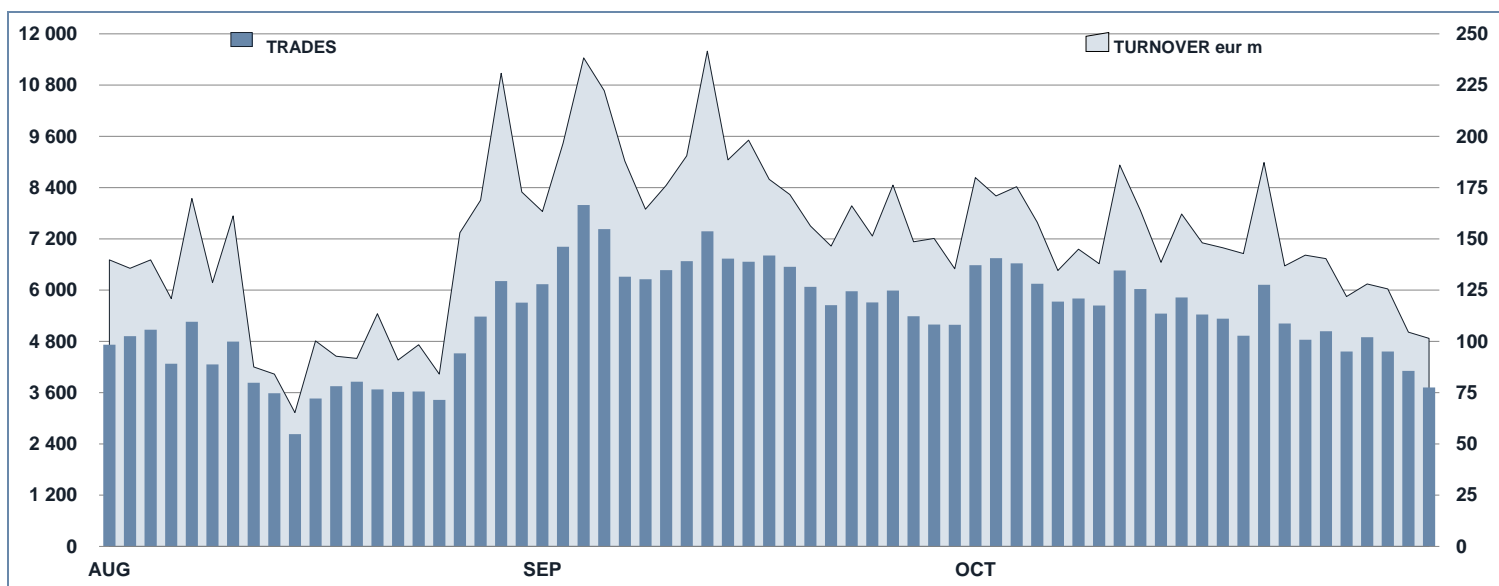


## DAILY TURNOVER

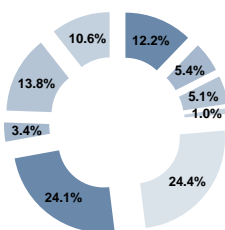


## MAIN INDICATORS

	LISTED					TRADING						
	DEC 2018		SEPTEMBER 2019		OCTOBER 2019		SEPTEMBER 2019		OCTOBER 2019		JAN - OCT 2019	
	LISTED END of MONTH	LISTED END of MONTH	NEW LISTED BEGIN of JAN 2019	LISTED END of MONTH	NEW LISTED BEGIN of JAN 2019	TRADES number	TURNOVER eur m	TRADES number	TURNOVER eur m	TRADES number	TURNOVER eur m	
<b>EUROTLX</b>												
FIXED INCOME	2 805	2 676	332	2 652	371	133 594	3 749.1	125 813	3 376.7	1 005 392	29 346.2	
CERT-X	2 254	3 110	1 612	3 246	1 862	85 000	1 329.5	86 331	1 274.2	661 865	9 365.9	
SHARES	587	761	224	759	225	5 574	44.8	8 147	62.4	62 878	494.0	
<b>TOTAL</b>	<b>5 646</b>	<b>6 547</b>	<b>2 168</b>	<b>6 657</b>	<b>2 458</b>	<b>224 168</b>	<b>5 123.4</b>	<b>220 291</b>	<b>4 713.2</b>	<b>1 730 135</b>	<b>39 206.1</b>	
<b>FIXED INCOME - TYPE OF INSTRUMENT</b>												
GOVERNMENT BONDS EU	335	328	19	323	20	1 768	79.1	1 748	62.2	21 114	698.6	
GOVERNMENT BONDS IT	126	142	42	143	47	12 906	729.1	10 317	529.5	99 646	6 192.6	
GOVERNMENT BONDS NON-EU	143	137	5	134	5	10 667	202.3	8 510	172.3	79 534	1 553.0	
GOVERNMENT BONDS SOVEREIGN	22	27	7	27	7	1 107	50.2	882	30.3	11 477	326.5	
BANKING BONDS NON EURO BOND	718	664	105	647	112	65 678	1 310.9	59 925	1 193.6	436 438	8 316.9	
CORPORATE BONDS	639	632	91	639	109	20 753	580.9	19 867	604.5	159 906	4 945.5	
EMERGING MARKETS BONDS	89	92	6	91	6	2 862	84.7	3 342	84.9	28 678	631.2	
FINANCIALS BONDS	415	367	34	367	41	6 059	428.6	5 410	374.1	60 227	4 274.7	
SUPRANATIONAL BONDS	318	287	23	281	24	11 794	283.3	15 812	325.2	108 372	2 407.1	
<b>TOTAL</b>	<b>2 805</b>	<b>2 676</b>	<b>332</b>	<b>2 652</b>	<b>371</b>	<b>133 594</b>	<b>3 749.1</b>	<b>125 813</b>	<b>3 376.7</b>	<b>1 005 392</b>	<b>29 346.2</b>	
<b>FIXED INCOME - TYPE OF STRUCTURE</b>												
STRUCTURED INTEREST RATE	233	224	20	215	21	22 157	596.2	20 377	522.8	159 951	4 018.5	
PLAIN VANILLA	2 313	2 179	272	2 165	306	94 741	2 744.7	90 376	2 525.4	736 256	22 512.1	
INFLATION LINKED	92	89	2	91	4	803	34.0	468	15.5	7 205	263.0	
INDEX LINKED	49	69	25	69	27	3 422	57.9	3 143	53.3	23 956	370.6	
FUND LINKED	13	14	2	12	2	286	5.5	308	7.7	1 859	40.1	
FIXED FLOATER	84	75	4	74	4	11 716	299.6	10 601	239.1	72 902	2 071.5	
EQUITY LINKED	2	4	3	4	3	20	0.1	1	0.0	280	3.8	
CURRENCY LINKED	6	5	-	5	-	72	1.2	91	1.5	746	13.5	
CREDIT PROTECTION	10	13	3	13	3	102	2.5	94	2.2	1 075	26.1	
COMMODITY LINKED	1	2	1	2	1	103	1.8	187	2.4	571	8.3	
OTHER STRUCTURES	2	2	-	2	-	172	5.5	167	6.8	591	18.8	
<b>TOTAL</b>	<b>2 805</b>	<b>2 676</b>	<b>332</b>	<b>2 652</b>	<b>371</b>	<b>133 594</b>	<b>3 749.1</b>	<b>125 813</b>	<b>3 376.7</b>	<b>1 005 392</b>	<b>29 346.2</b>	

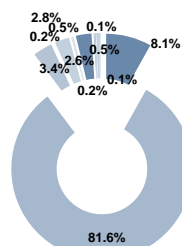
**FOCUS ON LISTED BONDS - END OF MONTH**

**LISTED BY TYPE OF INSTRUMENT**



- GOVERNMENT BONDS EU
- GOVERNMENT BONDS IT
- GOVERNMENT BONDS NON-EU
- GOVERNMENT BONDS SOVEREIGN
- BANKING BONDS NON EUROBOND
- CORPORATE BONDS
- EMERGING MARKETS BONDS
- FINANCIALS BONDS
- SUPRANATIONAL BONDS

**LISTED BY TYPE OF STRUCTURE**



- STRUCTURED INTEREST RATE
- PLAIN VANILLA
- INFLATION LINKED
- INDEX LINKED
- FUND LINKED
- FIXED FLOATER
- EQUITY LINKED
- CURRENCY LINKED
- CREDIT PROTECTION
- COMMODITY LINKED
- OTHER STRUCTURES

**TYPE OF INSTRUMENT - MOST TRADED BONDS IN TERMS OF TURNOVER**

GOVERNMENT BONDS EU - OCTOBER 2019				GOVERNMENT BONDS IT - OCTOBER 2019			
ISIN	NAME	eur m	TRADES	ISIN	NAME	eur m	TRADES
DE0001102473	BUND 0% 15AG29	3.8	18	IT0004356643	BTP 4.75% 01AG23	24.8	386
ES00000123B9	OBLIGACIONES 5.5% 30AP21	3.5	41	IT0004009673	BTP 3.75% 01AG21	22.9	491
ES00000123X3	OBLIGACIONES 4.4% 31OT23	3.0	42	IT0005240830	BTP 2.2% 01GN27	14.6	344
ES00000127H7	BONOS 1.15% 30LG20	3.0	29	IT0005217390	BTP 2.8% 01MZ67	13.5	159
DE0001102465	BUND 0.25% 15FB29	2.6	13	IT0004594930	BTP 4% 01ST20	12.5	285

GOVERNMENT BONDS NON EU - OCTOBER 2019				GOVERNMENT BONDS SOVEREIGN - OCTOBER 2019			
ISIN	NAME	eur m	TRADES	ISIN	NAME	eur m	TRADES
US912810RK60	USA -T-BOND 2.5% 15FB45	20.4	626	US465410BG26	ITALIA 5.375% 15GN33	15.5	458
US912828S273	USA -T-NOTE 1.125% 30GN21	9.0	227	US465410AH18	ITALIA 6.875% 27ST23	3.3	89
US9128282470	USA -T-NOTE 1.5% 15AG26	8.4	242	XS0222169564	ITALIA-CMS CAPFLOR 15GN20	1.9	54
XS0501195993	ARGENTINA STEP UP SINK 31DC38	8.2	1564	XS1085735899	PORTOGALLO 5.125% 15OT24	1.6	26
US912828VZ00	USA -T-NOTE 2% 30ST20	7.7	156	XS1768074319	ROMANIA 3.375% 08FB38	1.5	59

BANKING BONDS NON EUROBOND - OCTOBER 2019				CORPORATE BONDS - OCTOBER 2019			
ISIN	NAME	eur m	TRADES	ISIN	NAME	eur m	TRADES
IT0005087116	UCG TV CALL SUB 03MG25	80.7	2943	XS1885506813	TOYOTA MOTOR CREDIT STEP-UP 24OT25	49.3	2747
IT0005158677	BANCO BPM - FIX FLOAT CAP 29GE21	65.0	2444	XS1551347393	JAGUAR LAND ROVER 2.2% CALL 15GE24	35.8	379
IT0005199267	UCG-FIX FLOAT 30GN23	44.0	1623	XS1624210933	ANSALDO ENERGIA 2.75% 31MG24	29.9	285
XS1782625641	MEDIOBANCA INT SA STEP UP 29MZ24	43.1	2816	XS1707063589	SALINI IMPREGILO 1.75% CALL 26OT24	24.4	266
IT0005144677	BANCO BPM - FIX FLOAT CAP 30DC20	41.4	1739	XS1645687416	KEDRION 3% CALL 12LG22	22.7	246

EMERGING MARKETS BONDS - OCTOBER 2019				TYPE OF INSTRUMENT - TURNOVER			
ISIN	NAME	eur m	TRADES				
US900123AT75	TURCHIA 8% 14FB34	17.7	1150				
XS1629918415	TURCHIA 3.25% 14GN25	15.4	155				
US900123AW05	TURCHIA 7.375% 05FB25	5.4	381				
US900123AL40	TURCHIA 11.875% 15GE30	4.0	195				
US936205AS32	SUDAFRICA 5.375% 24LG44	3.7	20				

FINANCIALS BONDS - OCTOBER 2019				SUPRANATIONAL BONDS - OCTOBER 2019			
ISIN	NAME	eur m	TRADES	ISIN	NAME	eur m	TRADES
XS2055091784	MPS 3.625% 24ST24	20.8	190	IT0005374043	CDP FIX FLOAT 28GN26	28.9	1420
XS1225597905	ISP 2.85% SUB 23AP25	20.3	178	IT0005090995	CDP FIX FLOAT 20MZ22	15.3	588
XS1752894292	MPS-FIX FLOAT CALL SUB 18GE28	19.5	256	XS0449594455	BEI-TV 15GE20	13.0	98
XS1206977495	UNIPOL GRUPPO 3% 18MZ25	18.1	164	XS1567439689	BANQUE CENTRALE DE TUNISIE 5.625% 17FB24	10.6	104
XS1700435453	IFIS-FIX TO CMS CALL SUB 17OT27	15.6	156	XS1115184753	BEI 9.25% 03OT24	9.5	990

**MOST TRADED BONDS BY CURRENCY IN TERMS OF TURNOVER**

EUR - OCTOBER 2019				USD - OCTOBER 2019			
ISIN	NAME	CURRI eur m	TRADES	ISIN	NAME	CURRI eur m	TRADES
IT0005087116	UCG TV CALL SUB 03MG25	EUR 80.7	2943	XS1885506813	TOYOTA MOTOR CREDIT STEP-UP 24OT25	USD 49.3	2747
IT0005158677	BANCO BPM - FIX FLOAT CAP 29GE21	EUR 65.0	2444	XS1782625641	MEDIOBANCA INT SA STEP UP 29MZ24	USD 43.1	2816
IT0005199267	UCG-FIX FLOAT 30GN23	EUR 44.0	1623	IT0005176398	UCG 2.8% 16MG22	USD 35.7	1965
IT0005144677	BANCO BPM - FIX FLOAT CAP 30DC20	EUR 41.4	1739	IT0005185381	UCG-FIX FLOAT 31MG23	USD 35.0	1891
IT0005187890	BANCO BPM - FIX FLOAT CAP 22GN22	EUR 39.2	1973	XS1308289146	GOLDMAN SACHS GROUP STEP UP 26NV22	USD 32.6	1591

GBP - OCTOBER 2019				OTHER CURRENCIES - OCTOBER 2019			
ISIN	NAME	CURRI eur m	TRADES	ISIN	NAME	CURRI eur m	TRADES
XS1068966073	BEI TV 21MG21	GBP 3.9	194	XS1115184753	BEI 9.25% 03OT24	TRY 9.5	990
GB00BNR5R198	CHLT 2% 22LG20	GBP 2.5	87	XS1603368536	BEI 8% 05MG27	ZAR 8.5	387
XS1051861851	BEI 2.25% 07MZ20	GBP 2.3	18	XS1075219763	BEI 8.75% 18ST21	TRY 5.8	507
XS1679039328	BEI 0.875% 15DC23	GBP 1.3	56	XS1524609531	BEI 5.5% 23GE23	MXN 5.2	376
XS0452187320	ENEL FINANCE INT 5.75% 14ST40	GBP 1.1	13	XS1807207581	BEI 11% 20AP26	TRY 5.1	339

**News**

- 1 share
- 6 EU government bonds:
  - ROI BANQUE 0.25% CALL 08MZ23 (FR0013448669)
  - FREEPORT-MCMORAN 5.00% CALL 01ST27 (US35671DCC74)
  - FREEPORT-MCMORAN 5.25% CALL 01ST29 (US35671DCD57)
  - LBRANDS 6.750% CALLABLE 01LG36 (US0501797AM65)
  - MACYS 4.50% CALL 15DC34 (US55616XAM22)
  - MICROSOFT 3.70% CALL 08AG46 (US594918BT09)
  - OCCIDENTAL PETR CORP 4.40% CALL 15AP46 (US6745599CJ22)
  - XEROX 4.80% CALL 01MZ35 (US984121CL51)
- 7 new banking bonds non Eurobonds:
  - CRA CORTINA 1% 01AP21 (IT0005366503)
  - BANCA CENTRO EMILIA 0.80% 12AG22 (IT0005380511)
  - MEDIOBANCA 2.10% 18OT23 (IT0005383713)
  - ISS ISSUER - S&P500 10OT22 (XS202787385)
  - CITIGROUP GMH - STEP UP 30ST25 (XS045001935)
  - IMI 2.3% 23OT23 (XS2066599928)
  - IMI STEP UP 23OT26 (XS2066560421)
- 25 Other bonds:
  - PETROLEOS MEXICANOS 6.49% CALL 23GE27 (USP78625DW03)
  - PETROLEOS MEXICANOS 6.94% CALL 23GE30 (USP78625DX46)
  - PETROLEOS MEXICANOS 7.690% CALL 23GE50 (USP78625DY88)
  - SUPIND 6% CALLABLE 15GN25 (XS157958038)
  - CONTINENTAL ON CALL 12ST23 (XS2051667181)
  - BMW FINANCE 0% 24MZ23 (XS2055727916)
  - BMW FINANCE 0.375% 24ST27 (XS2055728054)
  - TOYOTA MOTOR CREDIT STEP-UP 22OT26 (XS2056488013)
  - IREN 0.875% CALL 14OT29 (XS2065601937)
  - ENI 1% 11OT34 (XS2065946837)
  - 1 SUPRANATIONAL/AGENCY BONDS:
    - AMCO SPA 1.375% 27GE25 (XS2063246198)
  - 2 Financial bonds:
    - MPS 10.50% SUB 23LG29 (XS2031926731)
    - GENERALI 2.124% SUB 01OT30 (XS2056491587)
    - EXOR 1.750% CALL 14OT34 (XS205888616)
    - BANCO BPM-FIX TO CMS CALL SUB 01OT29 (XS2058987845)
    - UCG 0.5% 09AP25 (XS2063547041)
    - NEXI 1.75% CALL 31OT24 (XS2066703989)
  - 1 other debt Securities:

Markets Analysis  
 Piazza degli Affari, 6 - 20123 Milano  
 T +39 02 724261 | Fax +39 02 8646.4323  
 e-mail: markets\_analysis@borsaitaliana.it

The above Information is published on web site [www.eurotlx.com](http://www.eurotlx.com)



This document contains text, data, graphics, photographs, illustrations, artwork, names, logos, trade marks, service marks and information ("Information") connected with EuroTLX Sim SpA ("EuroTLX") and with Borsa Italiana S.p.A. ("Borsa Italiana").

All reasonable efforts have been made to ensure that the Information in this document was correct at the time of publication. However, EuroTLX and Borsa Italiana accept no liability for decisions taken, or system-related or other work carried out by any party based on this document. The publication of this document does not represent solicitation of public saving and is not to be considered as a recommendation on the suitability of the investment, if any herein described.