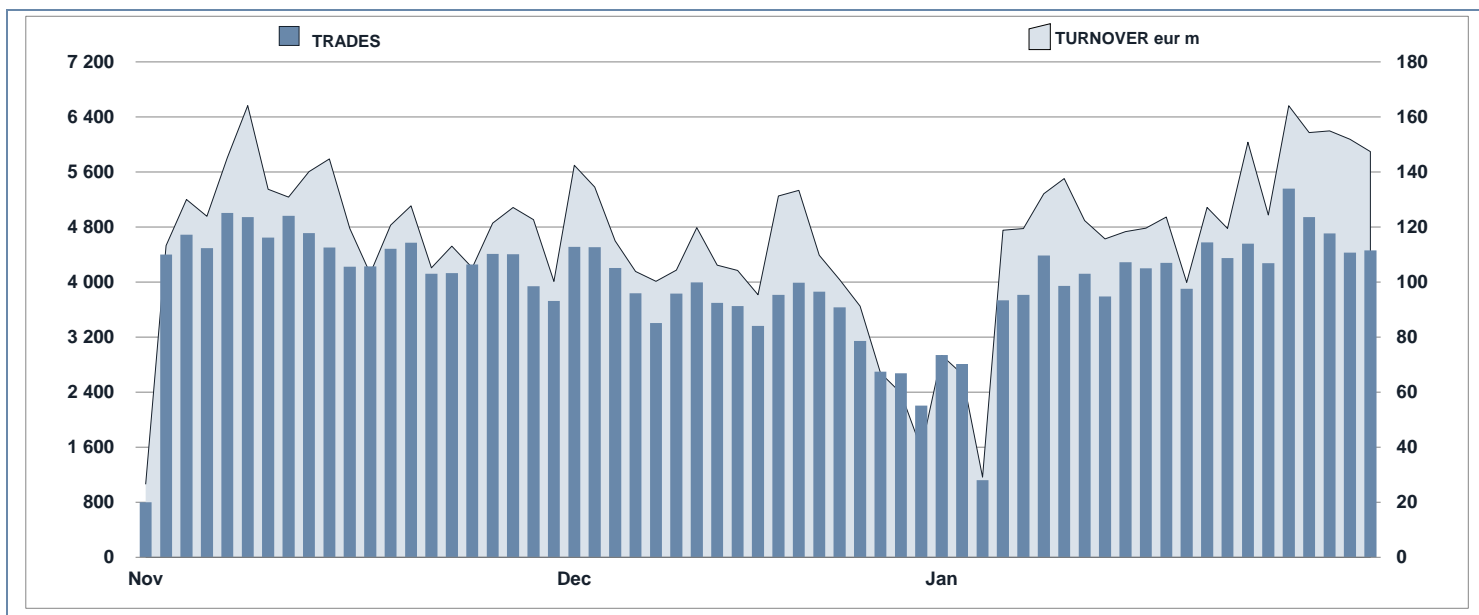




## EuroTLX Statistics

January 2020

### DAILY TURNOVER

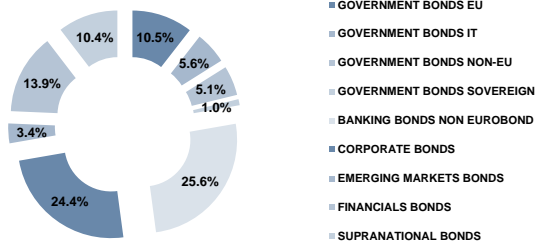


### MAIN INDICATORS

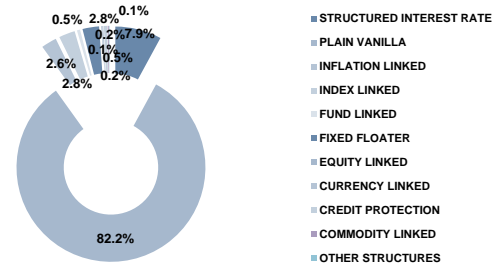
	LISTED					TRADING						
	DEC 2018		DECEMBER 2019		JANUARY 2020		NOVEMBER 2019		DECEMBER 2019		JANUARY 2020	
	LISTED	NEW LISTED	LISTED	NEW LISTED	LISTED	NEW LISTED	TRADES	TURNOVER	TRADES	TURNOVER	TRADES	TURNOVER
	END of MONTH	BEGIN of JAN 2019	END of MONTH	BEGIN of JAN 2020	number	eur m	number	eur m	number	eur m	number	eur m
<b>EUROTLX</b>												
FIXED INCOME	2 805	471	2 611	2 575	89 677	2 519.0	65 042	1 859.1	89 021	2 671.7		
CERT-X	2 254	3 321	3 112	3 321	89 174	1 289.1	54 655	724.0	75 587	992.5		
SHARES	587	228	619	618	7 898	61.5	5 989	50.4	11 265	99.7		
<b>TOTAL</b>	<b>5 646</b>	<b>2 947</b>	<b>6 342</b>	<b>6 514</b>	<b>186 749</b>	<b>3 869.5</b>	<b>125 686</b>	<b>2 633.4</b>	<b>175 873</b>	<b>3 763.8</b>		
<b>FIXED INCOME - TYPE OF INSTRUMENT</b>												
GOVERNMENT BONDS EU	335	21	271	271	1 189	45.7	1 094	39.0	1 394	39.2		
GOVERNMENT BONDS IT	126	52	142	143	9 422	536.9	7 238	426.0	7 339	475.2		
GOVERNMENT BONDS NON-EU	143	6	134	132	5 760	82.7	5 454	93.1	6 685	122.4		
GOVERNMENT BONDS SOVEREIGN	22	7	27	27	634	17.9	532	14.8	584	18.5		
BANKING BONDS NON EUROBOOND	718	171	679	660	39 709	781.1	25 400	507.9	33 971	747.6		
CORPORATE BONDS	639	135	637	628	16 090	452.5	12 548	354.3	21 826	656.5		
EMERGING MARKETS BONDS	89	6	89	88	2 250	61.7	1 536	34.5	2 219	58.4		
FINANCIALS BONDS	415	49	357	358	4 671	345.3	3 367	224.4	4 618	336.0		
SUPRANATIONAL BONDS	318	24	275	268	9 952	195.0	7 873	165.1	10 385	217.9		
<b>TOTAL</b>	<b>2 805</b>	<b>471</b>	<b>2 611</b>	<b>2 575</b>	<b>89 677</b>	<b>2 519.0</b>	<b>65 042</b>	<b>1 859.1</b>	<b>89 021</b>	<b>2 671.7</b>		
<b>FIXED INCOME - TYPE OF STRUCTURE</b>												
STRUCTURED INTEREST RATE	233	24	205	204	14 011	367.9	9 192	241.4	13 329	397.5		
PLAIN VANILLA	2 313	394	2 153	2 116	64 743	1 860.2	48 960	1 439.2	66 614	2 027.8		
INFLATION LINKED	92	4	69	68	538	22.2	402	16.8	334	14.4		
INDEX LINKED	49	29	69	71	2 334	40.6	1 372	23.4	1 615	28.1		
FUND LINKED	13	4	14	14	197	4.2	156	2.9	299	7.3		
FIXED FLOATER	84	5	72	73	7 498	214.9	4 719	129.0	6 580	189.5		
EQUITY LINKED	2	3	3	3	-	-	1	0.1	1	0.3		
CURRENCY LINKED	6	-	5	5	76	1.5	63	1.1	47	0.7		
CREDIT PROTECTION	10	4	14	14	123	3.5	64	2.4	103	3.5		
COMMODITY LINKED	1	5	5	5	68	1.0	33	0.5	29	0.5		
OTHER STRUCTURES	2	-	2	2	89	3.0	80	2.3	70	2.1		
<b>TOTAL</b>	<b>2 805</b>	<b>471</b>	<b>2 611</b>	<b>2 575</b>	<b>89 677</b>	<b>2 519.0</b>	<b>65 042</b>	<b>1 859.1</b>	<b>89 021</b>	<b>2 671.7</b>		

## FOCUS ON LISTED BONDS - END OF MONTH

## LISTED BY TYPE OF INSTRUMENT



## LISTED BY TYPE OF STRUCTURE



## TYPE OF INSTRUMENT - MOST TRADED BONDS IN TERMS OF TURNOVER

GOVERNMENT BONDS EU - JANUARY 2020				GOVERNMENT BONDS IT - JANUARY 2020																							
ISIN	NAME	eur m	TRADES	ISIN	NAME	eur m	TRADES																				
DE0001135432	BUND 3.25% 04LG42	3.4	23	IT0005217390	BTP 2.8% 01M267	24.7	378																				
ES00000127H7	BONOS 1.15% 30LG20	3.4	24	IT001278511	BTP 5.25% 01NV29	17.9	150																				
ES00000123X3	OBLIGACIONES 4.4% 31OT23	1.9	104	IT0004889033	BTP 4.75% 01ST28	16.6	119																				
GB00BN65R198	GILT 2% 22LG20	1.5	41	IT0005383309	BTP 1.35% 01AP30	15.9	221																				
PTOTEB0E0020	OT 4.1% 15FB45	1.5	16	IT0005365165	BTP 3% 01AG29	13.8	104																				
GOVERNMENT BONDS NON EU - JANUARY 2020				GOVERNMENT BONDS SOVEREIGN - JANUARY 2020																							
ISIN	NAME	eur m	TRADES	ISIN	NAME	eur m	TRADES																				
US912810RK60	USA - T-BOND 2.5% 15FB45	13.3	432	US465410BG26	ITALIA 5.375% 15GN33	8.9	269																				
XS1575968026	OMAN 6.5% 08MZ47	11.1	62	XS1768074319	ROMANIA 3.375% 08FB38	1.2	49																				
XS0501195993	ARGENTINA STEP UP SINK 31DC38	5.9	1 123	XS1968706876	ROMANIA 4.625% 03AP49	1.2	62																				
US9128282A70	USA - T-NOTE 1.5% 15AG26	5.4	219	US465410AH18	ITALIA 6.875% 27ST23	1.1	43																				
US912828S273	USA - T-NOTE 1.125% 30GN21	4.9	70	XS1313004928	ROMANIA 3.875% 29OT35	1.0	17																				
BANKING BONDS NON EUROBOND - JANUARY 2020				CORPORATE BONDS - JANUARY 2020																							
ISIN	NAME	eur m	TRADES	ISIN	NAME	eur m	TRADES																				
IT0005087116	UCG TV CALL SUB 03MG25	51.2	1 782	IT0005108490	AUTOSTRADA 1.625 12GN23	44.5	2 346																				
IT0005158677	BANCO BPM - FIX FLOAT CAP 29GE21	46.8	1 543	XS1624210933	ANSALDO ENERGIA 2.75% 31MG24	35.9	360																				
IT0005144877	BANCO BPM - FIX FLOAT CAP 30DC20	36.3	1 025	XS1224617347	ANSALDO ENERGIA 2.875% 28AP20	32.2	313																				
IT0005199267	UCG-FIX FLOAT 30GN23	34.1	966	XS1707063589	SALINI IMPREGILO 1.75% CALL 26OT24	28.6	296																				
IT0005187890	BANCO BPM - FIX FLOAT CAP 22GN22	29.1	1 485	XS1651347393	JAGUAR LAND ROVER 2.2% CALL 15GE24	25.6	258																				
EMERGING MARKETS BONDS - JANUARY 2020				TYPE OF INSTRUMENT - TURNOVER																							
ISIN	NAME	eur m	TRADES																								
US900123AT75	TURCHIA 8% 14FB34	7.0	538	<table border="1"> <thead> <tr> <th>Instrument Type</th> <th>Percentage</th> </tr> </thead> <tbody> <tr><td>Government Bonds EU</td><td>28.0%</td></tr> <tr><td>Government Bonds IT</td><td>17.8%</td></tr> <tr><td>Government Bonds Non-EU</td><td>12.6%</td></tr> <tr><td>Government Bonds Sovereign</td><td>8.2%</td></tr> <tr><td>Banking Bonds Non Eurobond</td><td>4.6%</td></tr> <tr><td>Corporate Bonds</td><td>2.2%</td></tr> <tr><td>Emerging Markets Bonds</td><td>1.5%</td></tr> <tr><td>Financials Bonds</td><td>0.7%</td></tr> <tr><td>Supranational Bonds</td><td>0.2%</td></tr> </tbody> </table>				Instrument Type	Percentage	Government Bonds EU	28.0%	Government Bonds IT	17.8%	Government Bonds Non-EU	12.6%	Government Bonds Sovereign	8.2%	Banking Bonds Non Eurobond	4.6%	Corporate Bonds	2.2%	Emerging Markets Bonds	1.5%	Financials Bonds	0.7%	Supranational Bonds	0.2%
Instrument Type	Percentage																										
Government Bonds EU	28.0%																										
Government Bonds IT	17.8%																										
Government Bonds Non-EU	12.6%																										
Government Bonds Sovereign	8.2%																										
Banking Bonds Non Eurobond	4.6%																										
Corporate Bonds	2.2%																										
Emerging Markets Bonds	1.5%																										
Financials Bonds	0.7%																										
Supranational Bonds	0.2%																										
US105756BK57	BRASILE 7.125% 20GE37	5.7	239																								
US836205AS32	SUDAFRICA 5.375% 24LG44	5.2	30																								
XS1629918415	TURCHIA 3.25% 14GN25	4.5	44																								
XS0767473852	RUSSIA 5.625% 04AP42	3.0	13																								
FINANCIALS BONDS - JANUARY 2020																											
ISIN	NAME	eur m	TRADES																								
XS1752894292	MPS-FIX FLOAT CALL SUB 18GE28	27.1	279																								
XS1700435453	IFIS-FIX TO CMS CALL SUB 17OT27	16.9	166																								
XS1733289406	CATTOLICA-FIX FLOAT CALL SUB 14DC47	15.1	138																								
XS1428773763	GENERALI-FIX FLOAT CALL SUB 08GN48	14.9	111																								
XS0555834984	BANCO BPM 6% SUB 05NV20	12.6	166																								
SUPRANATIONAL BONDS - JANUARY 2020																											
ISIN	NAME	eur m	TRADES																								
IT0005090995	CDP FIX FLOAT 20MZ22	15.2	433																								
IT0005374043	CDP FIX FLOAT 28GN26	14.1	716																								
XS1567439689	BANQUE CENTRALE DE TUNISIE 5.625% 17FB24	9.5	92																								
XS1524609531	BEI 5.5% 23GE23	9.2	545																								
XS1342860167	BEI 4.75% 19GE21	6.4	338																								

## MOST TRADED BONDS BY CURRENCY IN TERMS OF TURNOVER

EUR - JANUARY 2020					USD - JANUARY 2020				
ISIN	NAME	CURRENCY	eur m	TRADES	ISIN	NAME	CURRENCY	eur m	TRADES
IT0005087116	UCG TV CALL SUB 03MG25	EUR	51.2	1 782	XS1389110716	CITIGROUP GMH - FIX FLOAT CAP 30ST26	USD	15.8	300
IT0005158677	BANCO BPM - FIX FLOAT CAP 29GE21	EUR	46.8	1 543	IT0005185381	UCG-FIX FLOAT 31MG23	USD	15.6	999
IT0005108490	AUTOSTRADA 1.625 12GN23	EUR	44.5	2 346	XS1782625641	MEDIOBANCA INT SA STEP UP 29MZ24	USD	14.1	905
IT0005144877	BANCO BPM - FIX FLOAT CAP 30DC20	EUR	36.3	1 025	XS1885506813	TOYOTA MOTOR CREDIT STEP-UP 24OT25	USD	13.5	837
XS1624210933	ANSALDO ENERGIA 2.75% 31MG24	EUR	35.9	360	US912810RK60	USA - T-BOND 2.5% 15FB45	USD	13.3	432
GBP - JANUARY 2020					OTHER CURRENCIES - JANUARY 2020				
ISIN	NAME	CURRENCY	eur m	TRADES	ISIN	NAME	CURRENCY	eur m	TRADES
GB00BN65R198	GILT 2% 22LG20	GBP	1.5	41	XS1524609531	BEI 5.5% 23GE23	MXN	9.2	545
XS1068966073	BEI TV 21MG21	GBP	1.5	79	XS1342860167	BEI 4.75% 19GE21	MXN	6.4	338
XS0452187320	ENEL FINANCE INT 5.75% 14ST40	GBP	0.9	8	XS1605368536	BEI 8% 05MG27	ZAR	4.3	257
XS1679039328	BEI 0.875% 15DC23	GBP	0.7	16	XS1115184753	BEI 9.25% 03OT24	TRY	4.3	343
XS1031001198	BEI TV 17FB20	GBP	0.5	22	XS1190713054	BEI 4% 25FB20	MXN	4.1	164

## News

7 EU Government bonds	21 Financial bonds	XS1435298275 FARMAFACTURING 1.25% 21GN21 XS1278720237 ISP 2.697% 25AG25
5 new banking bonds non Eurobonds	XS2081018629 ISP 1.00% 19NV26 XS2081611993 AZIMUT 1.625% CALL 12DC24 IT0005398380 BNL-TV SINK 28GE22 EST	XS2065690005 ISP-TV 14OT22 XS2068241400 FARMAFACTURING 1.75% 23MG23 XS2101558307 UCG-FIX TO CMS CALL SUB 15GE32 XS2104968404 UCG 1.80% 20GE30 XS2104969765 UCG-FIX FLOAT CALL 20GE26 XS0486454530 ISP 4.375% 12FB20
1 supranational bonds	XS1810960390 IFIS 2% 24AP23 XS2066749461 UNICREDIT LEAS 0.502% CALL 18OT22 XS2106849727 MPS-FIX TO CMS CALL SUB 22GE30 XS2106861771 MEDIODANCA 1.125% 23AP25 XS2069040389 ANIMA HOLD 1.75% CALL 23OT26	1 other banking debt instruments CH0510362441 SG ISSUER - S&P 500 25GE22
5 corporate bonds	XS2028413122 CREVAL 2% 27NV22 XS2102388597 ISP 2.50% 15GE30 XS1639097747 FARMAFACTURING 2% 28GN22 XS1695270162 BANCASISTEMA 1.75% 13OT20 XS1577427872 ISP-TV 14MZ23	1 emerging market bonds ZAG000030404 SUDAFRICA 6.25% 31MZ36

Markets Analysis  
Piazza degli Affari, 6 - 20123 Milano  
T +39 02 724261 | Fax +39 02 8646.4323  
e-mail: markets\_analysis@borsaitaliana.it  
www.borsaitaliana.it

This document contains text, data, graphics and photographs, illustrations, artwork, names, logos, trade marks, service marks and information ("Information") connected with Borsa Italiana S.p.A. ("Borsa Italiana"). All reasonable efforts have been made to ensure that the Information in this document was correct at the time of publication. However, Borsa Italiana Spa accepts no liability for decisions taken, or systems-related or other work carried out by any party based on this document. The publication of this document does not represent solicitation, by Borsa Italiana, of public saving and is not to be considered as a recommendation by Borsa Italiana as to the suitability of the investment, if any, herein described.

© January 2020 Borsa Italiana S.p.A. All rights reserved.