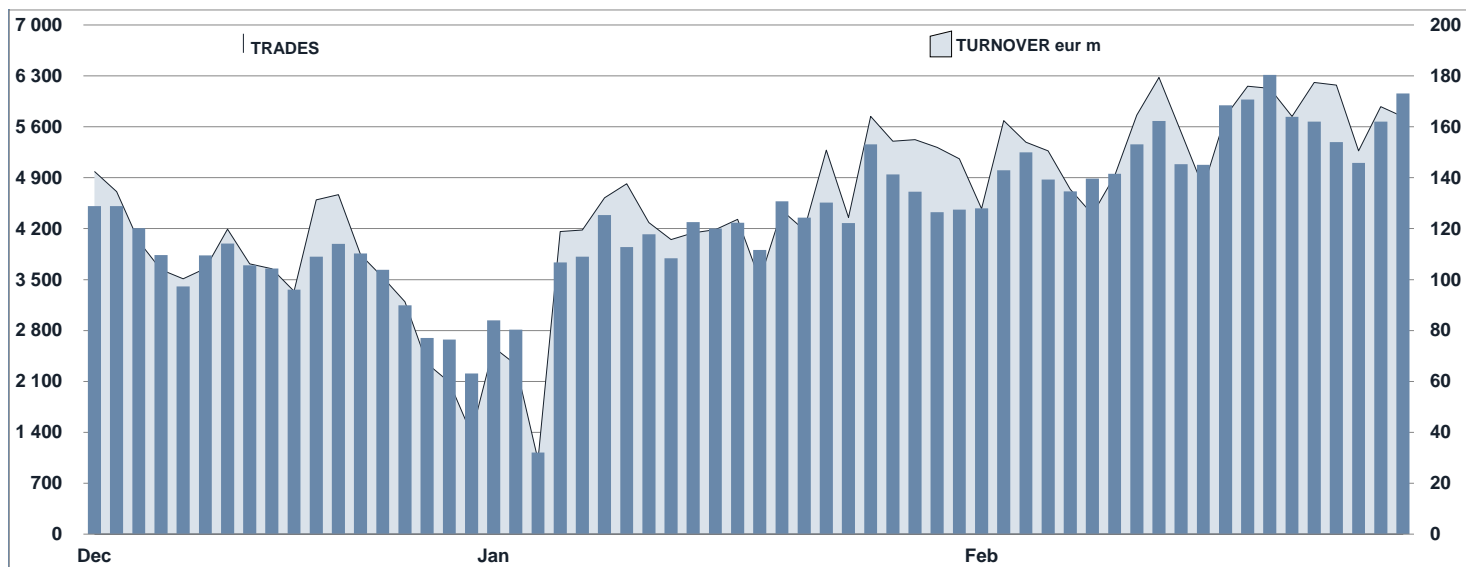




EuroTLX Statistics

February 2020

DAILY TURNOVER



MAIN INDICATORS

LISTED

TRADING

	DEC 2019		JANUARY 2020		FEBRUARY 2020		JANUARY 2020		FEBRUARY 2020		JAN - FEB 2020	
	LISTED	END OF MONTH	LISTED	NEW LISTED	LISTED	NEW LISTED	TRADES number	TURNOVER eur m	TRADES number	TURNOVER eur m	TRADES number	TURNOVER eur m
<b>EUROTLX</b>												
FIXED INCOME	2 611	2 575	41	2 589	92	89 021	2 671.7	107 185	3 150.3	196 206	5 822.0	
CERT-X	3 112	3 321	329	3 402	546	75 587	992.5	85 935	1 172.2	161 522	2 164.7	
SHARES	619	618	-	617	-	11 265	99.7	15 060	129.2	26 325	228.8	
<b>TOTAL</b>	<b>6 342</b>	<b>6 514</b>	<b>370</b>	<b>6 608</b>	<b>638</b>	<b>175 873</b>	<b>3 763.8</b>	<b>208 180</b>	<b>4 451.7</b>	<b>384 053</b>	<b>8 215.5</b>	
<b>FIXED INCOME - TYPE OF INSTRUMENT</b>												
GOVERNMENT BONDS EU	271	271	3	274	7	1 394	39.2	1 449	56.9	2 843	96.1	
GOVERNMENT BONDS IT	142	143	4	144	8	7 339	475.2	6 528	440.7	13 867	915.9	
GOVERNMENT BONDS NON-EU	134	132	-	130	-	6 685	122.4	8 653	181.1	15 338	303.5	
GOVERNMENT BONDS SOVEREIGN	27	27	-	29	2	584	18.5	949	39.5	1 533	57.9	
BANKING BONDS NON EURO BOND	679	660	5	658	18	33 971	747.6	43 038	962.5	77 009	1 710.1	
CORPORATE BONDS	637	628	5	635	15	21 826	656.5	24 558	685.0	46 384	1 341.4	
EMERGING MARKETS BONDS	89	88	1	90	5	2 219	58.4	4 083	90.5	6 302	148.9	
FINANCIALS BONDS	357	358	22	364	34	4 618	336.0	5 222	426.1	9 840	762.1	
SUPRANATIONAL BONDS	275	268	1	265	3	10 385	217.9	12 705	268.1	23 090	486.0	
<b>TOTAL</b>	<b>2 611</b>	<b>2 575</b>	<b>41</b>	<b>2 589</b>	<b>92</b>	<b>89 021</b>	<b>2 671.7</b>	<b>107 185</b>	<b>3 150.3</b>	<b>196 206</b>	<b>5 822.0</b>	
<b>FIXED INCOME - TYPE OF STRUCTURE</b>												
STRUCTURED INTEREST RATE	205	204	3	202	4	13 329	397.5	16 768	509.5	30 097	907.0	
PLAIN VANILLA	2 153	2 116	33	2 130	80	66 614	2 027.8	79 604	2 357.5	146 218	4 385.3	
INFLATION LINKED	69	68	-	68	-	334	14.4	384	14.5	718	29.0	
INDEX LINKED	69	71	3	72	4	1 615	28.1	1 965	32.5	3 580	60.6	
FUND LINKED	14	14	-	15	1	299	7.3	444	13.5	743	20.7	
FIXED FLOATER	72	73	2	72	2	6 580	189.5	7 653	213.1	14 233	402.6	
EQUITY LINKED	3	3	-	3	-	1	0.3	5	0.2	6	0.5	
CURRENCY LINKED	5	5	-	5	-	47	0.7	40	0.9	87	1.6	
CREDIT PROTECTION	14	14	-	15	1	103	3.5	127	3.6	230	7.1	
COMMODITY LINKED	5	5	-	5	-	29	0.5	132	2.3	161	2.8	
OTHER STRUCTURES	2	2	-	2	-	70	2.1	63	2.7	133	4.8	
<b>TOTAL</b>	<b>2 611</b>	<b>2 575</b>	<b>41</b>	<b>2 589</b>	<b>92</b>	<b>89 021</b>	<b>2 671.7</b>	<b>107 185</b>	<b>3 150.3</b>	<b>196 206</b>	<b>5 822.0</b>	

