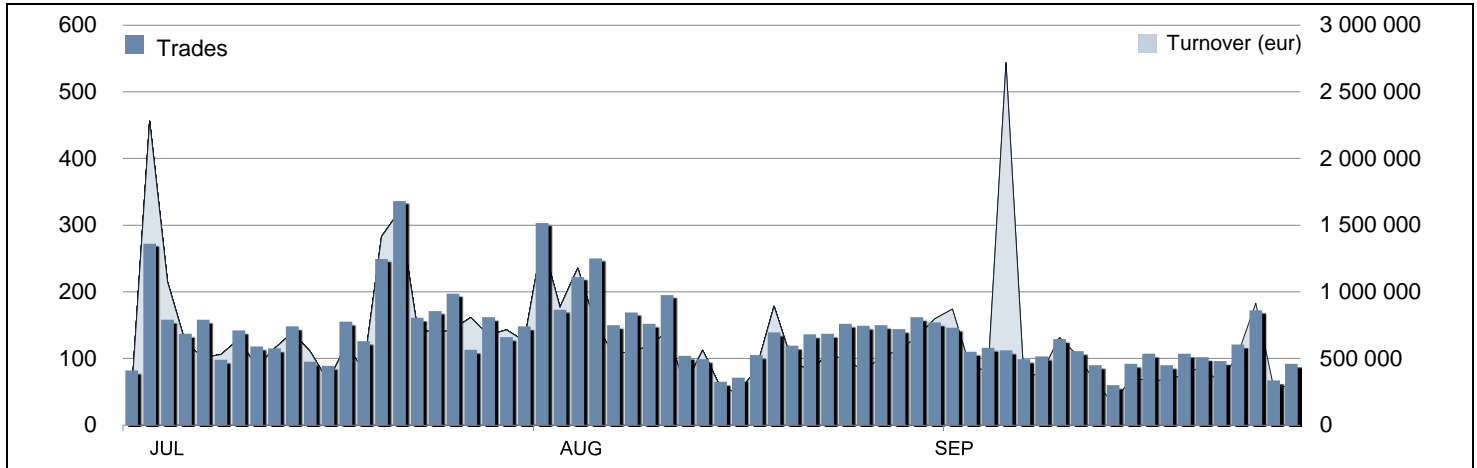


MIV - TRADING EVOLUTION

CLOSED ENDED FUNDS - MAIN INDICATORS

	30 SEPTEMBER 2019		SEPTEMBER 2019		JAN-SEP 2019	
	PRICE (eur)	CAPITALISATION (eur)	TRADES	TURNOVER (eur)	TRADES	TURNOVER (eur)
QF ALPHA IMMOBILIARE	1 164.1	120 922 721	52	242 666	1 461	9 370 453
QF AMUNDI RE EUROPA	1 154.1	97 924 605	248	1 339 384	2 116	9 743 068
QF AMUNDI RE ITALIA	945.5	63 042 327	96	278 486	1 708	7 407 485
QF ATLANTIC 1	332.3	173 319 083	223	1 905 856	2 207	13 026 438
QF IMMOBILIARE DINAMICO	105.2	153 001 325	451	1 307 556	6 375	18 457 667
QF IMMOBILIUM 2001	1 549.9	40 296 880	14	46 194	222	896 208
QF MEDIOLANUM RE A	3.9	31 227 359	51	271 907	329	1 052 921
QF MEDIOLANUM RE B	2.4	162 965 594	125	789 003	1 432	6 238 774
QF OPPORTUNITA ITALIA	1 163.2	67 171 858	343	1 259 651	3 843	12 605 536
QF POLIS	225.7	29 115 300	80	143 893	1 721	6 099 046
QF RISPARMIO IMMOBILIARE UNO ENERGIA	3 700.0	17 760 000	1	3 700	11	42 182
QF SECURFONDO	121.9	7 314 797	33	38 056	289	590 746
QF SOCRATE	253.7	65 473 998	132	501 748	1 385	4 339 083
QF UNICREDIT IMM UNO	210.9	33 743 200	211	803 215	2 742	13 382 424
QF VALORE IMM GLOBAL	610.6	18 837 243	55	166 125	666	1 854 335
TOTAL		1 082 116 289	2 115	9 097 441	26 507	105 106 368

PERMANENT CAPITAL VEHICLES LISTED ON MIV - MAIN INDICATORS

	30 SEPTEMBER 2019		SEPTEMBER 2019		JAN-SEP 2019	
	TRADES	TURNOVER (eur)	TRADES	TURNOVER (eur)	TRADES	TURNOVER (eur)
NB AURORA	10.1	150 750 000	19	2 700 456	318	19 310 321

HOLDING COMPANIES LISTED ON MIV - MAIN INDICATORS

	30 SEPTEMBER 2019		SEPTEMBER 2019		JAN-SEP 2019	
	PRICE (eur)	CAPITALISATION (eur)	TRADES	TURNOVER (eur)	TRADES	TURNOVER (eur)
M&C	0.037	15 043 105	142	31 190	3 120	2 314 188

MIV

MIV - Market for Investment Vehicles – is the reference market for the listing of close-end funds and permanent capital vehicles that invests in real economy.

MIV can accommodate a wide range of investment strategies:

- Private Equity
- Public and Private Debt
- Venture Capital
- Industry-specific strategy: Real Estate, Infrastructure, Healthcare, etc.
- Multi-strategy

In addition, could be listed on MIV:

- Special Purpose Acquisition Companies (SPACs)
- Investment vehicles other than Alternative Investment Funds (AIFs), including REITs that have not already fully invested their capital

PERMANENT CAPITAL VEHICLES LISTED ON AIM ITALIA - MAIN INDICATORS

	30 SEPTEMBER 2019		SEPTEMBER 2019		JAN-SEP 2019	
	PRICE (eur)	CAPITALISATION (eur)	TRADES	TURNOVER (eur)	TRADES	TURNOVER (eur)
4AIM SICAF	464.3	23 004 899	37	58 990	165	261 514

REAL ESTATE INVESTMENT TRUSTS (SIQ) LISTED ON MTA - MAIN INDICATORS

	30 SEPTEMBER 2019		SEPTEMBER 2019		JAN-SEP 2019	
	PRICE (eur)	CAPITALISATION (eur)	TRADES	TURNOVER (eur)	TRADES	TURNOVER (eur)
AEDES	1.2	38 344 044	1 109	1 865 244	18496	30 561 275
COIMA RES	8.4	304 516 920	1 249	5 460 492	11303	41 183 856
COVIVIO	96.5	FOREIGN	416	1 429 873	8013	29 075 971
IGD - IMMOBILIARE GRANDE DISTRIBUZIONE	5.6	619 613 194	5 089	17 020 555	69068	176 871 400
NOVA RE	4.3	46 996 074	317	432 384	1812	1 406 577
RESTART	0.4	13 778 359	1 000	1 081 795	23814	30 658 592
TOTAL		1 023 248 591	9 180	27 290 345	132 506	309 757 671