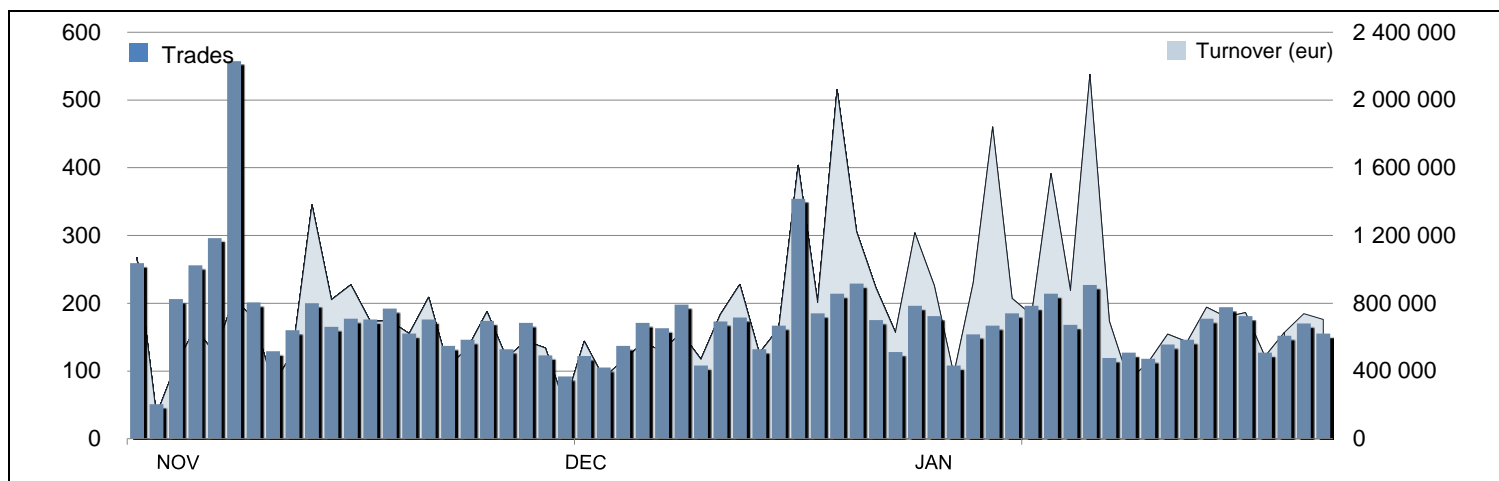




## Closed Ended Funds and Permanent Capital Vehicles Stat

January 2020

### MIV - TRADING EVOLUTION



### CLOSED ENDED FUNDS - MAIN INDICATORS

	31 JANUARY 2020		DECEMBER 2019		JANUARY 2020	
	PRICE (eur)	CAPITALISATION (eur)	TRADES	TURNOVER (eur)	TRADES	TURNOVER (eur)
QF ALPHA IMMOBILIARE	1 167.5	121 278 784	67	1 348 762	106	430 662
QF AMUNDI RE EUROPA	1 181.1	100 220 870	262	1 187 590	305	2 059 949
QF AMUNDI RE ITALIA	891.3	59 427 659	156	676 591	119	539 849
QF ATLANTIC 1	281.9	147 040 434	517	2 834 286	593	4 719 535
QF IMMOBILIARE DINAMICO	100.0	145 506 926	657	2 211 031	976	3 355 178
QF IMMOBILIUM 2001	1 690.7	43 957 333	93	378 516	82	296 353
QF MEDIOLANUM RE A	4.5	35 725 989	83	309 559	74	173 805
QF MEDIOLANUM RE B	2.8	185 513 321	166	1 106 926	147	770 915
QF OPPORTUNITA ITALIA	1 239.4	71 567 956	316	930 298	606	2 470 617
QF POLIS	95.5	12 319 242	55	176 956	75	162 083
QF RISPARMIO IMMOBILIARE UNO ENERGIA	3 700.0	17 760 000	1	3 700	1	3 700
QF SOCRATE	232.0	59 874 096	211	456 696	177	669 577
QF UNICREDIT IMM UNO	214.1	34 260 248	265	1 763 169	220	1 028 800
QF VALORE IMM GLOBAL	550.0	16 967 500	80	137 724	86	201 992
QF SECURFONDO			76	74 186		DELISTED
<b>TOTAL</b>		<b>1 051 420 358</b>	<b>3 005</b>	<b>13 595 990</b>	<b>3 567</b>	<b>16 883 014</b>

### PERMANENT CAPITAL VEHICLES LISTED ON MIV - MAIN INDICATORS

	31 JANUARY 2020		DECEMBER 2019		JANUARY 2020	
	PRICE (eur)	CAPITALISATION (eur)	TRADES	TURNOVER (eur)	TRADES	TURNOVER (eur)
NB AURORA	10.6	158 760 000	27	202 382	34	2 012 851

#### MIV

MIV - Market for Investment Vehicles – is the reference market for the listing of close-end funds and permanent capital vehicles that invests in real economy.

MIV can accommodate a wide range of investment strategies:

- Private Equity
- Public and Private Debt
- Venture Capital
- Industry-specific strategy: Real Estate, Infrastructure, Healthcare, etc.
- Multi-strategy

In addition, could be listed on MIV:

- Special Purpose Acquisition Companies (SPACs)
- Investment vehicles other than Alternative Investment Funds (AIFs), including REITs that have not already fully invested their capital

### PERMANENT CAPITAL VEHICLES LISTED ON AIM ITALIA - MAIN INDICATORS

	31 JANUARY 2020		DECEMBER 2019		JANUARY 2020	
	PRICE (eur)	CAPITALISATION (eur)	TRADES	TURNOVER (eur)	TRADES	TURNOVER (eur)
4AIM SICAF	341.5	16 920 293	16	76 009	20	51 471

### REAL ESTATE INVESTMENT TRUSTS (SIIQ) LISTED ON MTA - MAIN INDICATORS

	31 JANUARY 2020		DECEMBER 2019		JANUARY 2020	
	PRICE (eur)	CAPITALISATION (eur)	TRADES	TURNOVER (eur)	TRADES	TURNOVER (eur)
AEDES	1.4	45 958 105	1 186	2 561 592	5446	12 665 068
COIMA RES	9.0	324 369 201	1 526	4 731 542	1566	7 564 725
COVIVIO	106.9	FOREIGN	326	1 091 392	381	1 615 956
IGD - IMMOBILIARE GRANDE DISTRIBUZIONE	6.1	669 888 915	5 680	15 903 042	6426	14 290 714
NOVA RE	3.3	36 159 666	268	339 876	224	202 535
RESTART	0.7	20 800 093	1 138	1 920 448	3324	5 575 923
<b>TOTAL</b>		<b>1 097 175 980</b>	<b>10 124</b>	<b>26 547 892</b>	<b>17 367</b>	<b>41 914 920</b>