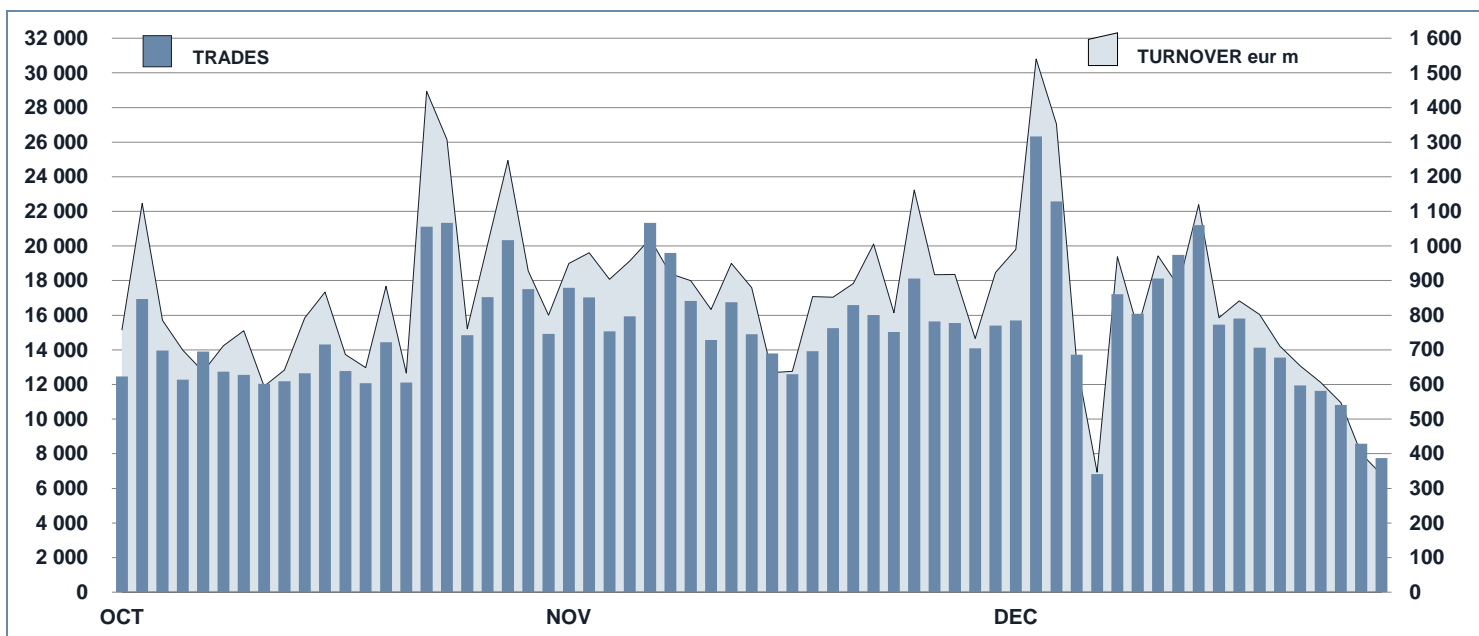


MOT Statistics
December 2015
MOT DAILY TURNOVER

MAIN INDICATORS
LISTED BOND
TRADING

	DECEMBER 2014		NOVEMBER 2015		DECEMBER 2015		NOVEMBER 2015		DECEMBER 2015		JAN - DEC 2015	
	LISTED	END of MONTH	LISTED	NEW LISTED	LISTED	NEW LISTED	TRADES	TURNOVER	TRADES	TURNOVER	TRADES	TURNOVER

of which BONDS IN DISTRIBUTION

MARKET SEGMENTS

ITALIAN GOVERNMENT BONDS	113	119	39	117	41	234 030	16 847.3	200 908	14 732.6	3 371 414	255 783.2
BONDS	456	314	18	307	19	41 474	888.5	54 634	789.1	510 710	9 107.5
EUROBONDS and ABSs	538	682	209	685	219	60 686	954.0	46 762	693.4	735 253	12 366.0
of which BONDS IN DISTRIBUTION	-	-	11	-	11	2 468	240.5	-	-	9 591	487.1
TOTAL	1 107	1 115	266	1 109	279	336 190	18 689.8	302 304	16 215.1	4 617 377	277 256.7

ISSUERS

ITALIAN GOVERNMENT BONDS	113	119	39	117	41	234 030	16 847.3	200 908	14 732.6	3 371 414	255 783.2
EUROBONDS REPUBLIC OF ITALY	10	9	1	9	1	2 841	66.5	3 314	64.7	37 970	801.3
FOREIGN PUBLIC DEBT	273	312	64	311	65	20 855	328.3	15 445	232.9	264 468	4 534.6
SUPRANATIONAL ENTITIES	228	304	101	309	109	23 471	349.3	18 122	250.6	272 218	4 582.1
BANKS	457	333	42	324	44	36 683	584.1	54 798	776.7	503 338	8 222.0
CORPORATE (*)	26	38	19	39	19	18 310	514.2	9 717	157.6	167 969	3 333.4
ABS	-	-	-	-	-	-	-	-	-	-	-
TOTAL	1 107	1 115	266	1 109	279	336 190	18 689.8	302 304	16 215.1	4 617 377	277 256.7

(*) BOC and BOP are included

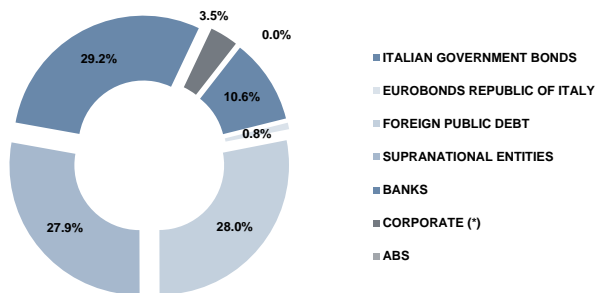
TYPE OF STRUCTURE

PLAIN VANILLA	713	732	205	733	214	75 538	1 485.4	73 796	1 093.1	894 285	16 366.5
STRUCTURED INTEREST RATE	193	189	17	185	18	25 519	343.4	26 471	374.0	333 289	4 790.9
INFLATION LINKED	42	40	3	39	3	397	8.0	458	9.4	8 025	187.9
INDEX LINKED	38	28	2	29	3	652	5.3	641	5.9	9 574	118.6
EQUITY LINKED	5	4	-	4	-	40	0.3	23	0.2	437	5.0
FUND LINKED	-	-	-	-	-	-	-	-	-	-	-
COMMODITY LINKED	2	2	-	-	-	7	0.0	7	0.0	64	0.5
CURRENCY LINKED	1	1	-	2	-	7	0.1	-	-	289	4.0

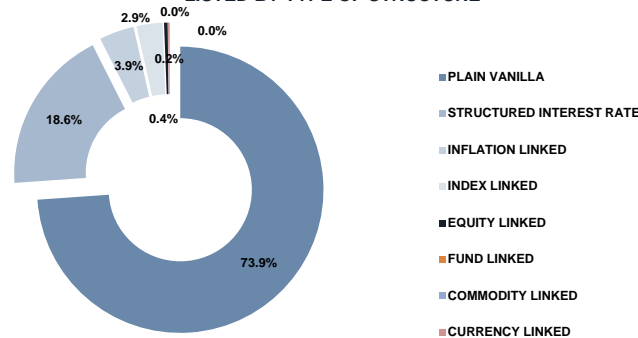
ITALIAN GOVERNMENT BONDS	113	119	39	117	41	234 030	16 847.3	200 908	14 732.6	3 371 414	255 783.2
TOTAL	1 107	1 115	266	1 109	279	336 190	18 689.8	302 304	16 215.1	4 617 377	277 256.7

FOCUS ON LISTED BONDS - END OF MONTH

LISTED BY ISSUERS



LISTED BY TYPE OF STRUCTURE



Italian Government Bonds are not included

ISSUERS - MOST TRADED BONDS IN TERMS OF TURNOVER

ITALIAN GOVERNMENT BONDS - DECEMBER 2015

ISIN	DESC	eur m	TRADES
IT0005083057	BTP TF 3,25% ST46 EUR	2075.462006	34930
IT0005094088	BTP TF 1,65% MZ32 EUR	1334.20217	27083
IT0005090318	BTP TF 1,50% GN25 EUR	1029.523648	11537
IT0003934657	BTP-1FB37 4%	847.1509983	16515
IT0005012783	BTP ITALIA AP20 EUR	569.661076	5551

FOREIGN PUBLIC DEBT - DECEMBER 2015

ISIN	DESC	eur m	TRADES
PTOTE5OE0007	PORTUGAL TF 4,1% AP37 EUR	24.8849401	1071
DE0001102374	BUND TF 0,5% FB25 EUR	16.2796706	200
GR0114028534	GGB TF 4,75% AP19 EUR	14.9956741	1182
US731011AT95	POLAND TF 3% MZ23 USD	13.89534147	855
ES00000127A2	REGNO SPAGNA OBLIGACI TF 1,95% LG30 EUR	13.1961419	543

EUROBONDS REPUBLIC OF ITALY - DECEMBER 2015

ISIN	DESC	eur m	TRADES
US465410BG26	ITALY 33USD 5,375	30.16393264	1728
US465410AH18	ITALY SET23USD 6,875	17.98638247	987
XS0098449456	ITALY 29EUR FRN	12.592048	407
XS0100688190	ITALY 19EUR FRN	2.8522825	173
XS0133144898	ITALY 16EUR 5,75	0.57195442	15

SUPRANATIONAL ENTITIES - DECEMBER 2015

ISIN	DESC	eur m	TRADES
XS0848049838	EIB TF 6% OT19 ZAR	10.4722504	1193
XS1014703851	EIB TF 10,5% DC17 BRL	9.93299492	1247
XS0648456167	EIB LG18 TRY 9,25	9.053805802	771
XS0070553820	EIB NV26 ZC USD	7.698684105	458
US298785GS94	EIB TF 1,875% FB25 USD	7.598254009	199

BANKS - DECEMBER 2015

ISIN	DESC	eur m	TRADES
IT0004966823	BANCO POP TF 5,50% NV20 LT2 AMORT EUR	101.831917	7625
IT0005120313	BANCO POP TV EUR3M+4,375 LG22 SUB TIER2	65.1949459	5073
IT0005127508	MEDIOBANCA VALORE TV FLOOR SUBT2 ST25EUR	56.3414828	2845
IT0004842370	UBI TF 6% OT19 LT2 AMORT EUR	39.79680616	3420
IT0004917842	MEDIOBANCA TF 5,75% AP23 LT2 EUR	36.1539739	2160

CORPORATE - DECEMBER 2015

ISIN	DESC	eur m	TRADES
IT0005090995	CDP MC MZ22 EUR	47.7777291	1770
XS1308021846	IVS GROUP TF 4,5% 2015-2022 EUR	23.8398966	1857
IT0005108490	AUTOSTRADE TF 1,625% GN23 EUR	18.9939712	848
XS1042118106	GE COMPANY TF 2,5% MZ20 USD	10.74708631	775
XS1289967298	BNP ARBITR T MISTO ST25 USD	5.719523201	319

TYPE OF STRUCTURE - MOST TRADED BONDS IN TERMS OF TURNOVER

PLAIN VANILLA - DECEMBER 2015

ISIN	DESC	eur m	TRADES
IT0005083057	BTP TF 3,25% ST46 EUR	2075.462006	34930
IT0005094088	BTP TF 1,65% MZ32 EUR	1334.20217	27083
IT0005090318	BTP TF 1,50% GN25 EUR	1029.523648	11537
IT0003934657	BTP-1FB37 4%	847.1509983	16515
IT0005104473	CCT-EU TV EUR6M+0,55% GN22 EUR	372.283404	3254

STRUCTURED INTEREST RATE - DECEMBER 2015

ISIN	DESC	eur m	TRADES
IT0005090995	CDP MC MZ22 EUR	47.7777291	1770
IT0004720436	MEDIOBANCA GN21 TV QUARTO ATTO SUB LOWT2	31.6376842	1782
IT0004457070	UBI MZ19 MC SUB CALL	15.5838778	1059
IT0004841778	UBI TASSO MISTO OT19 LT2 WELCOME ED EUR	12.8768244	1064
XS0098449456	ITALY 29EUR FRN	12.592048	407

INFLATION LINKED - DECEMBER 2015

ISIN	DESC	eur m	TRADES
IT0005012783	BTP ITALIA AP20 EUR	569.661076	5551
IT0004917958	BTP ITALIA AP17 EUR	365.0294909	4882
IT0005105843	BTP ITALIA AP23 EUR	308.4822563	3802
IT0004969207	BTP ITALIA NV17 EUR	289.5373737	4488
IT0004863608	BTP ITALIA OT16 EUR	275.0030136	3690

INDEX LINKED - DECEMBER 2015

ISIN	DESC	eur m	TRADES
XS1233613188	WORLD BANK MC LG23 USD GREEN GROWTH BONI	1.57919831	155
IT0004909682	MEDIOBANCA MB16 INDEX LINKED MC GN18 EUR	1.0496051	61
IT0004924004	MEDIOBANCA SINTESI T MISTO MC NV21 EUR	0.4839815	53
IT0004924046	MEDIOBANCA SINTESI T MISTO MC NV21 USD	0.279938121	40
IT0004958069	MEDIOBANCA MB26 INDEX LINKED MC OT21 EUR	0.2414958	58

EQUITY LINKED - DECEMBER 2015

ISIN	DESC	eur m	TRADES
IT0006719584	MACQUARIE STR SEC AP17 STEP UP ENERGY	0.15293247	21
DE000UBBDSR5	UBS LG17 MC EUR EQUITY LINKED AUTOCALL	0.010193	2

OTHERS (*) - DECEMBER 2015

ISIN	DESC	eur m	TRADES
XS0638296920	BOFA GN18 MC INVEST BOND ORO	0.0216006	7

(*) Fund Linked, Commodity Linked and Currency Linked are included

News

In December, 2 Italian Government bonds and the following instruments were listed on MOT market:

- *EIB EUR 2,750 per cent. Eurocooperation (ECoop) Bonds due 13 September 2030*(XS0960306578)
- *IBRD USD 4,750% Global Notes due February 15, 2035*(US45965CA427)
- *IBRD USD 1,125 per cent. Fixed Rate Notes due July 19, 2017*(US45958DC44)
- *EIB NOK 3,250 per cent. Bonds due 24th May, 2023*(XS033581002)
- *EIB NOK 3,00 per cent. Bonds due 4th February, 2020*(XS0882238297)
- *MEDIOBANCA (MB45) 2015/2022 con opzioni digitali sugli indici Ftse100, S&P 500, Nikkei 225*(IT0005127151)
- *Issue of EUR 50,000,000 Twelve-Year Fixed-to-Floating Rates Notes, due November 26, 2027*(XS1104105353)
- *Republic of Poland EUR 3,00 per cent. Notes due 15 January 2024*(XS1015428821)
- *ESM EUR 1,850 per cent. Notes due 1 December 2055*(EU000A1U9936)
- *ESM EUR 1,625 per cent. Notes due 17 November 2036*(EU000A1U9828)
- *IBRD TRY 8,25 per cent. Notes due 4 March 2022*(XS1198022706)

Markets Analysis
 Piazza degli Affari, 6 - 20123 Milano
 T +39 02 724261 | Fax +39 02 8646.4323
 e-mail: markets_analysis@borsaitaliana.it
 www.borsaitaliana.it



This document contains text, data, graphics, photographs, illustrations, artwork, names, logos, trade marks, service marks and information ("Information") connected with Borsa Italiana S.p.A. ("Borsa Italiana"). All reasonable efforts have been made to ensure that the Information in this document was correct at the time of publication. However, Borsa Italiana Spa accepts no liability for decisions taken, or systems-related or other work carried out by any party based on this document. The publication of this document does not represent solicitation, by Borsa Italiana, of public saving and is not to be considered as a recommendation by Borsa Italiana as to the suitability of the investment, if any, herein described.