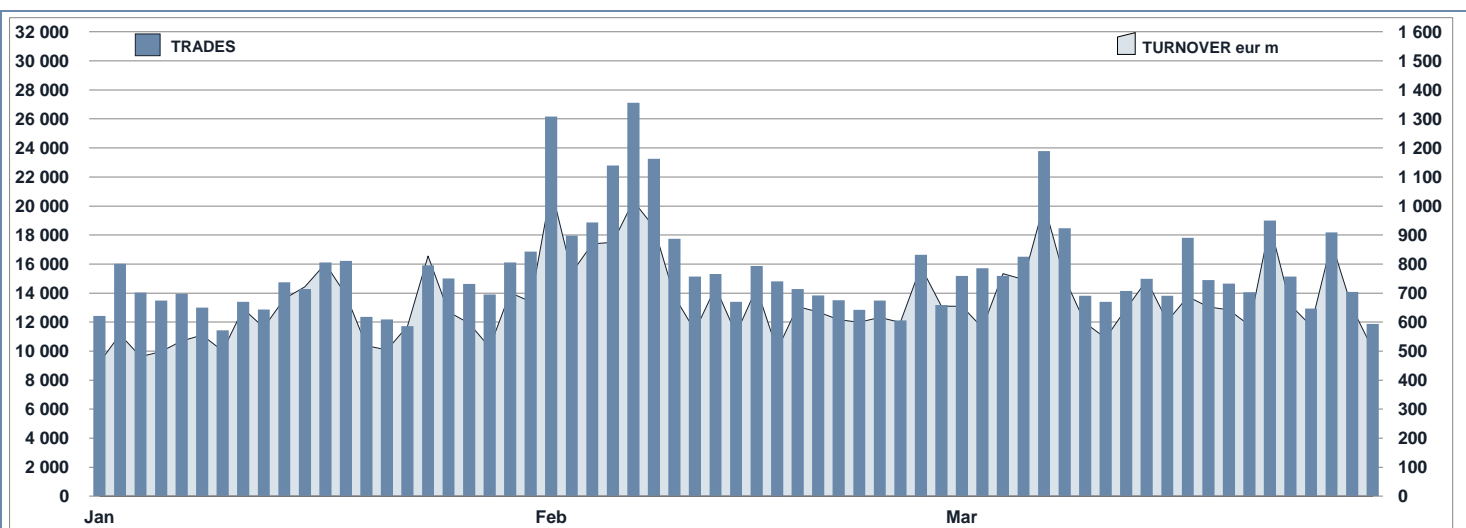
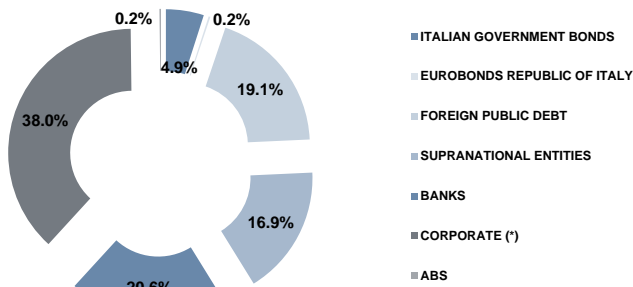


**FIXED INCOME Statistics**
**March 2019**
**FIXED INCOME DAILY TURNOVER**

**MAIN INDICATORS**

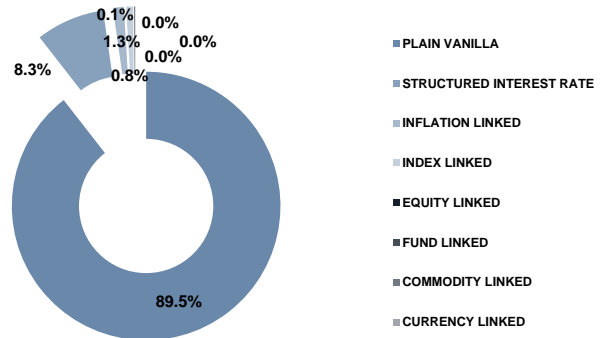
	LISTED BOND					TRADING						
	DEC 2018		FEBRUARY 2019		MARCH 2019		FEBRUARY 2019		MARCH 2019		JAN - MAR 2019	
	LISTED END of MONTH	LISTED END of MONTH	NEW LISTED BEGIN of JAN 2019	LISTED END of MONTH	NEW LISTED BEGIN of JAN 2019	TRADES number	TURNOVER eur m	TRADES number	TURNOVER eur m	TRADES number	TURNOVER eur m	
<b>MARKET SEGMENTS</b>												
DMOT - ITALIAN GOVERNMENT BONDS	127	129	8	131	12	264 668	13 275.7	246 077	13 126.5	747 794	38 441.8	
DMOT - BONDS	163	151	2	140	2	12 469	178.1	12 042	179.7	38 515	561.0	
EUROMOT	1 056	1 074	42	1 072	65	55 401	797.5	63 075	908.8	171 962	2 531.6	
EXTRAMOT	1 307	1 301	17	1 306	34	5 671	182.9	6 418	209.1	18 143	587.9	
<i>of which BONDS IN DISTRIBUTION</i>	-	-	1	-	1	4	0.0	-	-	11	0.1	
<b>TOTAL</b>	<b>2 653</b>	<b>2 655</b>	<b>69</b>	<b>2 649</b>	<b>113</b>	<b>338 209</b>	<b>14 434.2</b>	<b>327 612</b>	<b>14 424.1</b>	<b>976 414</b>	<b>42 122.3</b>	
<b>ISSUERS</b>												
ITALIAN GOVERNMENT BONDS	127	129	8	131	12	264 668	13 275.7	246 077	13 126.5	747 794	38 441.8	
EUROBONDS REPUBLIC OF ITALY	5	6	1	6	1	1 952	34.9	2 258	40.1	6 419	109.7	
FOREIGN PUBLIC DEBT	490	500	20	506	35	13 045	233.3	16 271	313.6	41 659	832.0	
SUPRANATIONAL ENTITIES	451	456	14	448	16	25 482	340.4	30 351	396.6	81 575	1 102.6	
BANKS	566	556	11	546	20	23 095	359.7	22 177	339.5	67 271	1 035.1	
CORPORATE (*)	1 009	1 003	15	1 007	29	9 967	190.2	10 478	207.7	31 696	601.2	
ABS	5	5	-	5	-	-	-	-	-	-	-	
<b>TOTAL</b>	<b>2 653</b>	<b>2 655</b>	<b>69</b>	<b>2 649</b>	<b>113</b>	<b>338 209</b>	<b>14 434.2</b>	<b>327 612</b>	<b>14 424.1</b>	<b>976 414</b>	<b>42 122.3</b>	
(*) BOC and BOP are included												
<b>TYPE OF STRUCTURE</b>												
PLAIN VANILLA	2 256	2 261	56	2 253	91	53 063	882.4	61 000	1 028.6	168 686	2 876.7	
STRUCTURED INTEREST RATE	214	209	4	208	8	19 826	263.8	19 748	252.7	57 708	762.7	
INFLATION LINKED	33	33	1	33	1	297	7.4	400	9.8	1 016	24.9	
INDEX LINKED	21	21	-	21	-	352	4.6	373	4.2	1 191	13.2	
EQUITY LINKED	1	1	-	1	-	-	-	-	-	-	-	
FUND LINKED	1	1	-	2	1	3	0.4	14	2.2	19	2.9	
COMMODITY LINKED	-	-	-	-	-	-	-	-	-	-	-	
CURRENCY LINKED	-	-	-	-	-	-	-	-	-	-	-	
ITALIAN GOVERNMENT BONDS	127	129	8	131	12	264 668	13 275.7	246 077	13 126.5	747 794	38 441.8	
<b>TOTAL</b>	<b>2 653</b>	<b>2 655</b>	<b>69</b>	<b>2 649</b>	<b>113</b>	<b>338 209</b>	<b>14 434.2</b>	<b>327 612</b>	<b>14 424.1</b>	<b>976 414</b>	<b>42 122.3</b>	

**FOCUS ON LISTED BONDS - END OF MONTH**

**LISTED BY ISSUERS**



**LISTED BY TYPE OF STRUCTURE**



Italian Government Bonds are not included

**ISSUERS - MOST TRADED BONDS IN TERMS OF TURNOVER**

ITALIAN GOVERNMENT BONDS - MARCH 2019				FOREIGN PUBLIC DEBT - MARCH 2019			
ISIN	DESC	eur m	TRADES	ISIN	DESC	eur m	TRADES
IT0005340929	BTP TF 2,80% DC28 EUR	644.4	7 906	XS1085735899	PORTUGAL TF 5,125% OT24 USD	29.3	1 275
IT0005273013	BTP TF 3,45% MZ48 EUR	605.9	15 839	GR0138015814	GBB TF 4,2% GE42 EUR	14.6	898
IT0005217390	BTP TF 2,8% MZ67 EUR	523.0	16 971	PT0TES0E0007	PORTUGAL TF 4,1% AP37 EUR	11.8	350
IT0005321325	BTP TF 2,95% ST38 EUR	484.1	11 586	PT0TEBOE0020	PORTUGAL TF 4,1% FB45 EUR	10.1	303
IT0005365165	BTP TF 3,00% AG29 EUR	359.4	3 013	GR0133011248	GBB TF 4% GE37 EUR	8.2	569
EUROBONDS REPUBLIC OF ITALY - MARCH 2019				SUPRANATIONAL ENTITIES - MARCH 2019			
ISIN	DESC	eur m	TRADES	ISIN	DESC	eur m	TRADES
US465410BG26	ITALY 33USD 5,375	28.0	1 613	XS1605368536	EIB TF 8% MG27 ZAR	11.9	831
US465410AH18	ITALY SET23USD 6,875	7.2	407	XS1748439533	EIB TF 7,5% GE23 BRL	10.4	869
XS0098449456	ITALY 29EUR FRN	3.2	171	XS1574041999	EIB TF 10% MZ22 TRY	9.6	1 104
XS0100688190	ITALY 19EUR FRN	1.4	48	XS1342860167	EIB TF 4,75% GE21 MXN	9.4	314
ES0000012E51	OBLIGACIONES TF 1,45% AP29 EUR	0.2	17	XS1115184753	EIB TF 9,25% OT24 TRY	8.4	1 293
BANKS - MARCH 2019				CORPORATE - MARCH 2019			
ISIN	DESC	eur m	TRADES	ISIN	DESC	eur m	TRADES
XS1963242752	IMI SERIE XII MC MZ29 USD	18.4	921	IT0005090995	CDP MC MZ22 EUR	18.8	920
XS1937019062	IMI SERIE XI MC GE25 USD	16.6	977	XS0161100515	TEL ITALIA FIN SA 01/2033 FX 7,75 EUR	14.8	589
IT0005056483	MEDIOBANCA TF 3% OT19 USD	12.1	580	XS1800025022	MAIRE TECNIMONT TF 2,625% AP24 CALL EUR	12.3	845
IT0004720436	MEDIOBANCA GN21 TV QUARTO ATTO SUB LOWT2	11.2	458	XS1747134564	CARRARO INT TF GE25 CALL EUR	9.3	753
IT0005120313	BANCO BPM TV EUR3M+4,375 LG22 SUB TIER2	10.7	721	US87927VAF58	TELECOM CAP TF 6,375% NV33 CALL USD	8.3	704

**TYPE OF STRUCTURE - MOST TRADED BONDS IN TERMS OF TURNOVER**

PLAIN VANILLA - MARCH 2019				STRUCTURED INTEREST RATE - MARCH 2019			
ISIN	DESC	eur m	TRADES	ISIN	DESC	eur m	TRADES
IT0005340929	BTP TF 2,80% DC28 EUR	644.4	7 906	IT0005090995	CDP MC MZ22 EUR	18.8	920
IT0005273013	BTP TF 3,45% MZ48 EUR	605.9	15 839	XS1963242752	IMI SERIE XII MC MZ29 USD	18.4	921
IT0005217390	BTP TF 2,8% MZ67 EUR	523.0	16 971	XS1937019062	IMI SERIE XI MC GE25 USD	16.6	977
IT0005321325	BTP TF 2,95% ST38 EUR	484.1	11 586	IT0004720436	MEDIOBANCA GN21 TV QUARTO ATTO SUB LOWT2	11.2	458
IT0005365165	BTP TF 3,00% AG29 EUR	359.4	3 013	XS1963241606	IMI OPERA III SC MZ23 USD	9.7	517
INFLATION LINKED - MARCH 2019				INDEX LINKED - MARCH 2019			
ISIN	DESC	eur m	TRADES	ISIN	DESC	eur m	TRADES
IT0005012783	BTP ITALIA AP20 EUR	215.6	2 136	XS1233613188	WORLD BANK MC LG23 USD GREEN GROWTH BONI	1.1	91
IT0005332835	BTP ITALIA MG26 EUR	145.2	3 443	XS1917880285	WORLDBANK SUSTAINABLE MC INDLINK DC23USD	1.1	110
IT0005351678	BTP ITALIA NV22 EUR	108.1	1 587	XS1739518337	CS OC IND LINK MZ21 USD	0.7	14
IT0005105843	BTP ITALIA AF23 EUR	70.0	2 286	IT0005122830	MEDIOBANCA MB45 MC IND LINK ST22 EUR	0.3	39
IT0005174906	BTP ITALIA AF24 EUR	68.4	2 168	IT0004924004	MEDIOBANCA SINTESI T MISTO MC NV21 EUR	0.2	21
EQUITY LINKED - MARCH 2019				OTHERS (*) - MARCH 2019			
ISIN	DESC	eur m	TRADES	ISIN	DESC	eur m	TRADES
				XS1649517742	CS OC FD LINK NV21 USD	2.2	14

(\*) Fund Linked, Commodity Linked and Currency Linked are included

**News**

In March, on MOT market 4 Italian Government bonds and 23 instruments were listed; whereas on the ExtraMOT market 17 instruments were listed. Here below the list of financial instruments admitted to trading on the Professional Segment of ExtraMOT market at request of the issuer:

- IMI FABI S.p.A. 5% 2019 – 2024 (IT0005365306)
- IMI FABI S.p.A. 5% 2019 – 2024 (IT0005365314)
- TSW Industries Tf 6% Mar24 Amort Eur (IT0005366353)
- TSW Industries Tf 6% Mar24 Amort Eur (IT0005364945)
- Issue of Euro 750,000,000 2.125 per cent. Fixed Rate Notes due 21 March 2026 (IT0005366460)

Markets Analysis  
 Piazza degli Affari, 6 - 20123 Milano  
 T +39 02 724261 | Fax +39 02 8646.4323  
 e-mail: markets\_analysis@borsaitaliana.it  
 www.borsaitaliana.it

This document contains text, data, graphics, photographs, illustrations, artwork, names, logos, trade marks, service marks and information ("Information") connected with Borsa Italiana S.p.A. ("Borsa Italiana"). All reasonable efforts have been made to ensure that the Information in this document was correct at the time of publication. However, Borsa Italiana Spa accepts no liability for decisions taken, or systems-related or other work carried out by any party based on this document. The publication of this document does not represent solicitation, by Borsa Italiana, of public saving and is not to be considered as a recommendation by Borsa Italiana as to the suitability of the investment, if any, herein described.

© March 2019 Borsa Italiana S.p.A. All rights reserved.