

ETFplus Monitor

Q3 2020
July – September



London
Stock Exchange Group

Contents

ETFplus

Q3 News	page 3
---------	--------

New listings on Italian market	page 4
--------------------------------	--------

Trades	page 5
--------	--------

Liquidity – Spread	page 6
--------------------	--------

AUM in Italy and Net Inflow	page 7
-----------------------------	--------

European Comparison	page 8
---------------------	--------

Q3 News

ETFplus market Milestone – Q3 2020

- 2 new issuers on ETFplus: Tabula AM and HANetf ETC, for a total of 25 issuers of ETPs.
- 29 new instruments (22 ETFs and 7 ETCs) listed in Q3, for a total of 1296 instruments (1081 ETFs and 215 ETCs/ETNs) available on ETFplus market at the end of September.

AUM / Net inflow in Italy – Q3 2020

- New record for the ETFplus AUM, which reached €94.07bn (+15.93% vs September 2019).
- In the Q3 the net inflow reached €2.50bn, for a total of €8.45b in 2020 (+34.97% Y/Y).

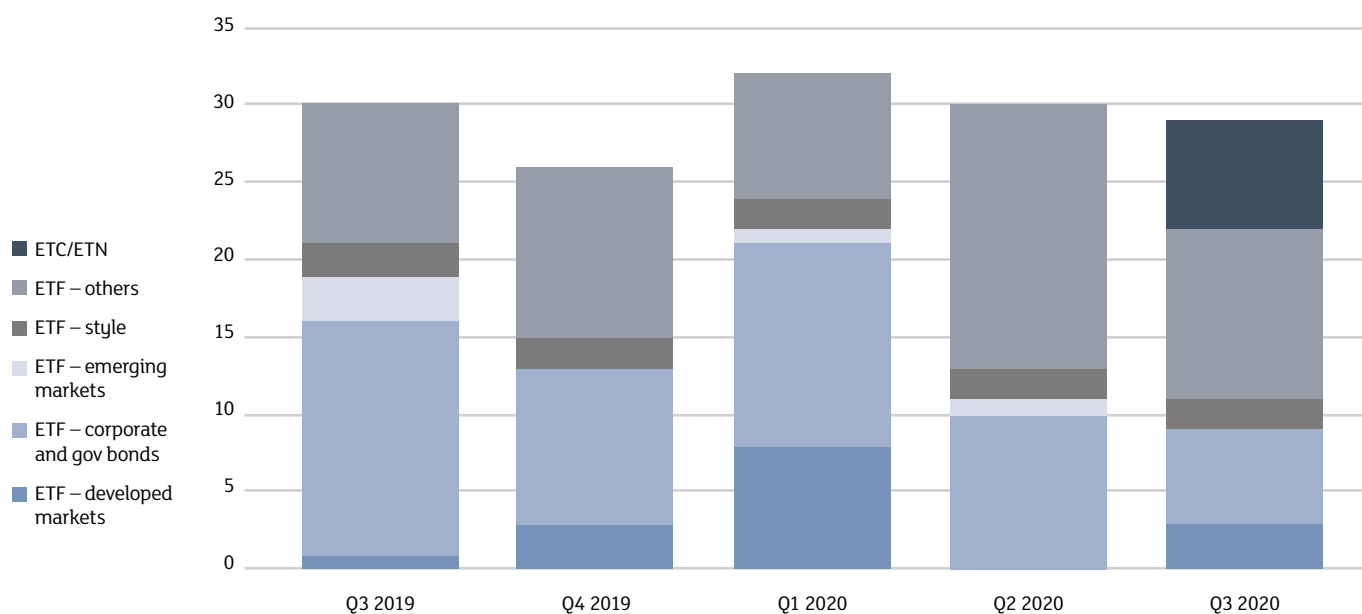
Trades – Q3 2020

- Q3 turnover: €26.09bn with more than 1.81m trades.
- At the end of September, the average number of daily trades in 2020 reached 35,569 (+73.47% vs FY 2019), meanwhile the average of daily turnover in 2020 reached €534.89m (+27.45% vs FY 2019).
- €968.75m traded with RFQ function in Q3 2020, with an average size of €1.11m.

News from ETFplus market

- 20 new ESG ETFs in Q3 (14 equity + 6 fixed income), for a total of 46 new ESG ETFs in 2020.
- First 2 equity ETFs aligned to Paris Agreement on climate change.
- 1 ETF on an index of global companies which respect ESG and Catholic principles.
- First ETC on physical gold sponsored by the Royal Mint.
- First ETF on an index of global companies focusing on a sustainable food value chain.

New listings on Italian market

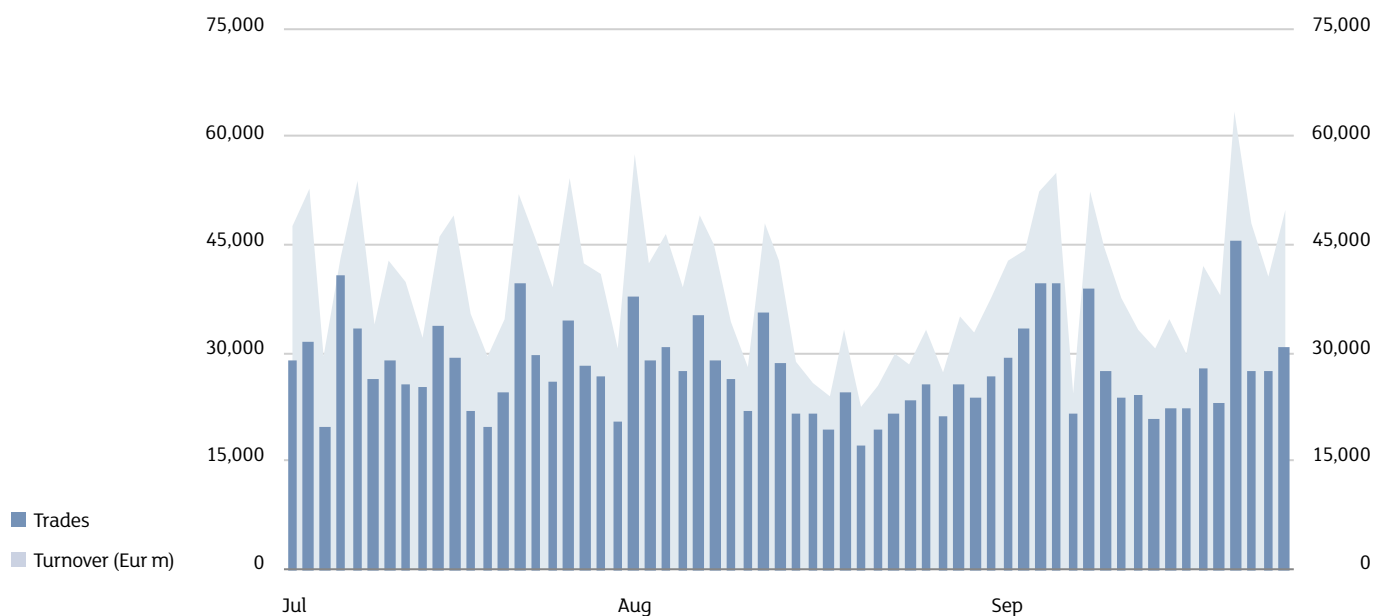


New listings – Q3 2020

ETF	
Corporate Bond - Euro	2
Commodities	1
Equity Style (Developed)	2
Inflation	1
Government Bonds - Euro	2
Equity Thematic	10
Equity Europe - Single Country	2
Equity Pacific	1
Corporate Bond - World	1
ETC/ETN	
Precious metals	7
Total Q3 2020	29
Total new listings 2020 (ETF+ETC/ETN)	91
Listed 30.09.2020	1,296

Source: Markets Analysis – London Stock Exchange Group

Trades



Daily average	Q3 2020	Var. % Q3 2019	YtD 2020	Var. % YtD 2019
---------------	---------	----------------	----------	-----------------

ETF

Trades	16,171	29.9%	20,574	65.6%
Turnover (Eur m)	282.6	-10.4%	404.2	15.2%

ETC/ETN

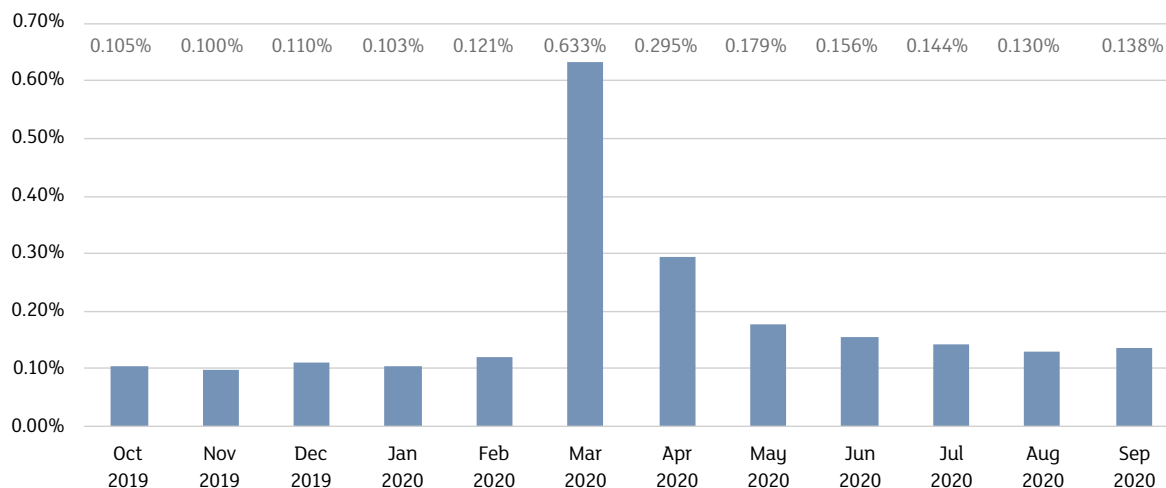
Trades	11,274	20.0%	14,995	87.5%
Turnover (Eur m)	112.7	23.5%	130.7	69.2%

Source: LSEG – Markets Analysis

Liquidity – Spread

	ETF Developed market	ETF Corporate government bond	ETF Emerging markets	ETF Style	ETF Others
Oct 2018	0.074%	0.106%	0.160%	0.165%	0.205%
Nov 2018	0.068%	0.068%	0.068%	0.068%	0.068%
Dec 2018	0.081%	0.081%	0.081%	0.081%	0.081%
Jan 2019	0.079%	0.079%	0.079%	0.079%	0.079%
Feb 2019	0.096%	0.096%	0.096%	0.096%	0.096%
Mar 2019	0.386%	0.386%	0.386%	0.386%	0.386%
Apr 2019	0.163%	0.163%	0.163%	0.163%	0.163%
May 2019	0.110%	0.110%	0.110%	0.110%	0.110%
Jun 2019	0.106%	0.106%	0.106%	0.106%	0.106%
Jul 2019	0.100%	0.100%	0.100%	0.100%	0.100%
Aug 2019	0.089%	0.089%	0.089%	0.089%	0.089%
Sep 2019	0.097%	0.097%	0.097%	0.097%	0.097%

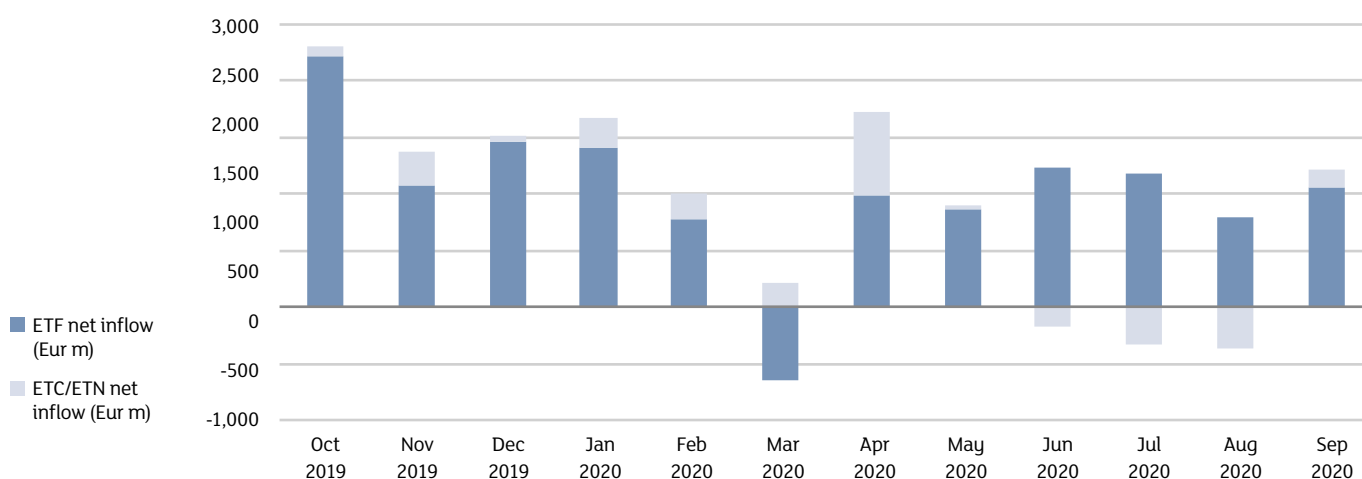
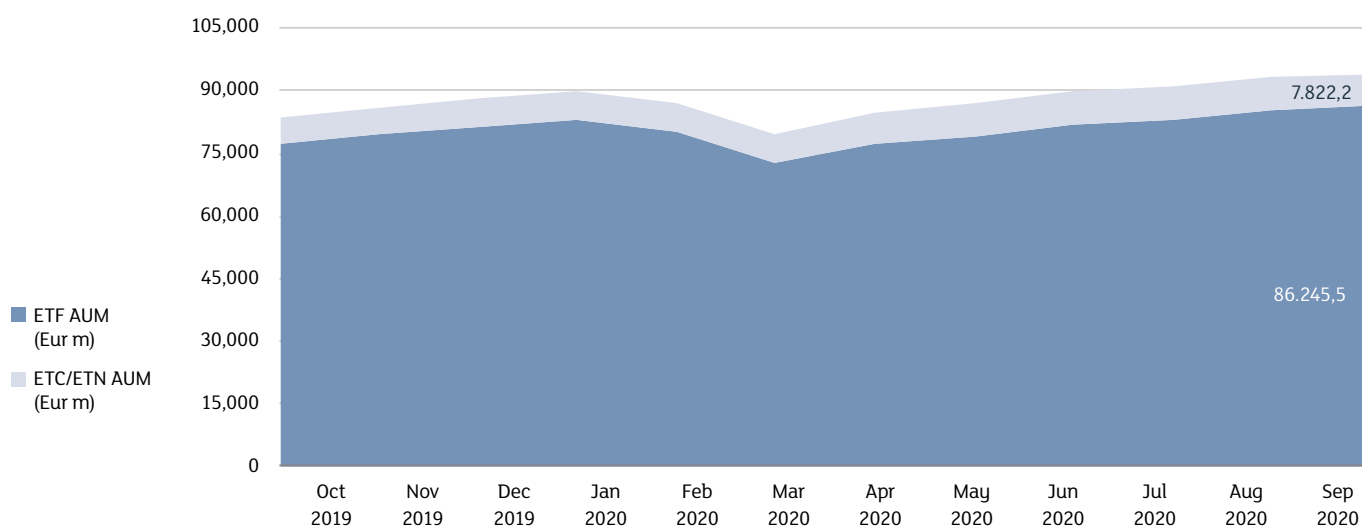
Market spread



Source: LSEG – Markets Analysis

SPREAD: It is the implicit cost that an investor incurs when buying and selling at the same moment a financial instrument at best bid and ask prices (it is calculated as the difference between best bid and ask prices divided by the mid quote).

AUM in Italy and Net Inflow



	AUM Sep 2020 (eur m)	Var. % Sep 2019
ETF	86,245.5	15.1%
ETC/ETN	7,822.2	26.2%
Total	94,067.7	15.9%

	Net Inflow Q3 2020 (eur m)	Net Inflow Q2 2020 (eur m)	Net Inflow YtD (eur m)
ETF	3,027.1	3,100.2	7,677.5
ETC/ETN	-523.8	588.4	769.1
Total	2,503.2	3,688.6	8,446.6

Source: LSEG – Markets Analysis

Annex 1 – New listings on Italian market: details about ETF

AREA	ISSUER	INSTRUMENT	ISIN	TRADING CODE	BENCHMARK
EQUITY THEMATIC	HSBC ETFS	HSBC USA SUSTAINABLE EQUITY UCITS ETF	IE00BKY40J65	HSUD	FTSE USA ESG LOW CARBON SELECT INDEX
CORPORATE BOND - WORLD	UBS ETF	UBS MSCI GLB LIQ CORP SUS UCITS ETF EURH	LU2099992260	ECE	BLOOMB BARC MSCI GLOBAL LIQ CORP SUST BOND HEDGED
CORPORATE BOND - EURO	XTRACKERS II	XTRACKERS ESG EUR CORP B SH DU UCITS ETF	LU2178481649	XZE5	BLOOMBERG BARCL MSCI EURO CORP SUST AND SRI 0-5Y
EQUITY THEMATIC	FRANKLIN LIBERTYSHARES ICAV	FRANKLIN S&P500 PARIS CLIMATE UCITS ETF	IE00BMDPBZ72	USPA	S&P 500 PARIS-ALIGNED CLIMATE INDEX
INFLATION	MULTI UNITS LUXEMBOURG	LYXOR CORE US TIPS DR UCITS ETF HED EUR	LU1452600437	TIPE	BLOOMB BARCL US INFLATION LINK BONDS TR HEDGED EUR
EQUITY THEMATIC	HSBC ETFS	HSBC EUROPE SUSTAINABLE EQUITY UCITS ETF	IE00BKY55W78	HSEU	FTSE DEVELOPED EUROPE ESG LOW CARBON SELECT INDEX
EQUITY PACIFIC	UBS ETF	UBS MSCI JAPAN UCITS ETF EUR HDG A	LU1169822266	JPNE	MSCI JAPAN 100% HEDGED TO EUR TRN
EQUITY THEMATIC	FRANKLIN LIBERTYSHARES ICAV	FRANKLIN STOXX600 PARIS CLIMAT UCITS ETF	IE00BMDPBY65	EUPA	STOXX EUROPE 600 PARIS-ALIGNED BENCHMARK INDEX
GOVERNMENT BONDS - EURO	UBS ETF	UBS JPM EMU GOV ESG LIQ UCITS ETF EUR A	LU2194286006	GEB	J.P. MORGAN EMU GOVERNMENT ESG LIQUID BOND TR
CORPORATE BOND - EURO	TABULA ICAV	TABULA ITRAXX IG BOND UCITS ETF(EUR)	IE00BL6XZW69	TTRX	IBOXX ITRAXX EUROPE BOND
EQUITY STYLE (DEVELOPED)	CREDIT SUISSE INDEX FUND IE ICAV	CSIF MSCI WRD ESG LEAD MIN VOL UCITS ETF	IE00BMDX0M10	WDMVO	MSCI WORLD ESG LEADERS MINIMUM VOLATILITY INDEX
EQUITY EUROPE - SINGLE COUNTRY	UBS ETF	UBS MSCI SWITZ 20/35 UCITS ETF EUR HDG A	LU1169830103	SVE	MSCI SWITZERLAND 20/35 100% HEDGED TO EUR TRN
EQUITY THEMATIC	HSBC ETFS	HSBC JAPAN SUSTAINABLE EQUITY UCITS ETF	IE00BKY55S33	HSJD	FTSE JAPAN ESG LOW CARBON SELECT INDEX
GOVERNMENT BONDS - EURO	OSSIAM LUX	OSSIAM EURO GOV BOND 3-5Y CARB REDUCTION	LU2069380306	OG35	ICE 3-5 YEAR EURO GOVERNMENT CARBON REDUCTION
EQUITY THEMATIC	RIZE UCITS ICAV	RIZE EDUCATION TECHNOLOGY UCITS ETF	IE00BLRPQJ54	LERN	FOX BERRY HOLONIQ EDU TECH&DIG LEARNING USD NTR

AREA	ISSUER	INSTRUMENT	ISIN	TRADING CODE	BENCHMARK
EQUITY THEMATIC	HSBC ETFS	HSBC DEV WORLD SUSTAINABLE EQUITY ETF	IE00BKY59K37	HSWD	FTSE DEVELOPED ESG LOW CARBON SELECT INDEX
EQUITY STYLE (DEVELOPED)	VANECK VECTORS UCITS ETFS PLC	VANECK MORNINGS GLOB WIDE MOAT UCITS ETF	IE00BL0BMZ89	GOAT	MORNINGSTAR GLOBAL WIDE MOAT FOCUS INDEX
EQUITY EUROPE - SINGLE COUNTRY	UBS ETF	UBS MSCI UK UCITS ETF EUR HDG A	LU1169821292	UKE	MSCI UNITED KINGDOM 100% HEDGED TO EUR TRN
EQUITY THEMATIC	RIZE UCITS ICAV	RIZE SUSTAINABLE FOOD UCITS ETF	IE00BLRPQH31	FOOD	FOXBERRY TEMATICA RESEARCH SUST FUTURE OF FOOD USD
EQUITY THEMATIC	LYXOR INDEX FUND	LYXOR MSCI WRD CATH PRIN ESG UCITS ETF A	LU2216829809	CATH	MSCIWORLD SELECT CATHOLIC PRINC ESG UNIV AND ENV
EQUITY THEMATIC	HANETF ICAV	ALERIAN MIDSTREAM ENERGY DIV ETF - DISTR	IE00BKPTXQ89	MMLP	ALERIAN MIDSTREAM ENERGY DIVIDEND INDEX
COMMODITIES	COMSTAGE	COMSTAGE BBG EQ-WE COM EX AGRI UCITS ETF	LU0419741177	CRBA	BLOOMBERG ENERGY AND METALS EQUAL WEIGHTED TR
PRECIOUS METALS	XTRACKERS ETC	XTRACKERS IE PHYSICAL SILVER ETC	DE000A2T0VS9	XSLR	LBMA SILVER PRICE (SILVER AUCTION)
PRECIOUS METALS	XTRACKERS ETC	XTRACKERS IE PHYSICAL SILVER EUR HED ETC	DE000A2UDH55	XSLE	LBMA SILVER PRICE (SILVER AUCTION)
PRECIOUS METALS	HANETF ETC SECURITIES PLC	THE ROYAL MINT PHYS GOLD ETC SECURITIES	XS2115336336	RMAU	LBMA GOLD PRICE (GOLD PM AUCTION)
PRECIOUS METALS	XTRACKERS ETC	XTRACKERS IE PHYSIC PLATINUM EUR HED ETC	DE000A2UDH63	XPPE	LBMA PLATINUM (PM AUCTION)
PRECIOUS METALS	XTRACKERS ETC	XTRACKERS IE PHYSICAL GOLD ETC	DE000A2T0VU5	XGDU	LBMA GOLD PRICE (GOLD PM AUCTION)
PRECIOUS METALS	XTRACKERS ETC	XTRACKERS IE PHYSICAL GOLD EUR HED ETC	DE000A2T5DZ1	XGDE	LBMA GOLD PRICE (GOLD PM AUCTION)
PRECIOUS METALS	INVESCO PHYSICAL MARKETS	INVESCO PHYSICAL GOLD EUR HEDGED ETC	XS2183935274	SGLE	1 ONCIA TROY DI ORO

This document contains text, data, graphics, photographs, illustrations, artwork, names, logos, trade marks, service marks and information (“Information”) connected with Borsa Italiana S.p.A. (“Borsa Italiana”). All reasonable efforts have been made to ensure that the Information in this document was correct at the time of publication. However, Borsa Italiana Spa accepts no liability for decisions taken, or systems-related or other work carried out by any party based on this document. The publication of this document does not represent solicitation, by Borsa Italiana, of public saving and is not to be considered as a recommendation by Borsa Italiana as to the suitability of the investment, if any, herein described.

Contacts

Media Relations
Telephone +39 02 72426 360
media.relations@borsaitaliana.it
www.borsaitaliana.it